



## UK Office

### Everest Biotech Ltd

Cherwell Innovation Centre  
77 Heyford Park  
Upper Heyford  
Oxfordshire  
OX25 5HD  
UK

Enquiries:

[info@everestbiotech.com](mailto:info@everestbiotech.com)

Sales:

[sales@everestbiotech.com](mailto:sales@everestbiotech.com)

Tech support:

[support@everestbiotech.com](mailto:support@everestbiotech.com)

Tel: +44 (0)1869 238326

Fax: +44 (0)1869 238327

## US Office

### Everest Biotech c/o Abcore

405 Maple Street, Suite A106  
Ramona,  
CA 92065  
USA

Inquiries:

[info@everestbiotech.com](mailto:info@everestbiotech.com)

Sales:

[usasales@everestbiotech.com](mailto:usasales@everestbiotech.com)

Tech support:

[support@everestbiotech.com](mailto:support@everestbiotech.com)

Tel: 888-320-4628 (toll-free)

Fax: 888-841-9041

[www.everestbiotech.com](http://www.everestbiotech.com)

**Research Use Only. Not for  
diagnostic or therapeutic use.**

## EB11981 - Goat Anti-Stomatin Antibody

Size: 100µg specific antibody in 200µl



### Target Protein

**Principal Names:** STOM, stomatin, BND7, EPB7, EPB72, erythrocyte band 7 integral membrane protein, erythrocyte membrane protein band 7.2 (stomatin), protein 7.2b

**Official Symbol:** STOM

**Accession Number(s):** NP\_004090.4; NP\_937837.1

**Human GeneID(s):** [2040](#)

**Important Comments:** This antibody is expected to recognize both reported isoforms (NP\_004090.4; NP\_937837.1).

### Immunogen

Peptide with sequence EKRHTRDSEAQR-C, from the N Terminus of the protein sequence according to NP\_004090.4; NP\_937837.1.

Please note the [peptide](#) is available for sale.

### Purification and Storage

Purified from goat serum by ammonium sulphate precipitation followed by antigen affinity chromatography using the immunizing peptide.

Supplied at 0.5 mg/ml in Tris saline, 0.02% sodium azide, pH7.3 with 0.5% bovine serum albumin.

Aliquot and store at -20°C. Minimize freezing and thawing.

### Applications Tested

**Peptide ELISA:** antibody detection limit dilution 1:128000.

**Western blot:** Approx 30kDa band observed in Human Erythrocytes, Spleen, Bone Marrow and Lung lysates (calculated MW of 31.7kDa according to NP\_004090.4).

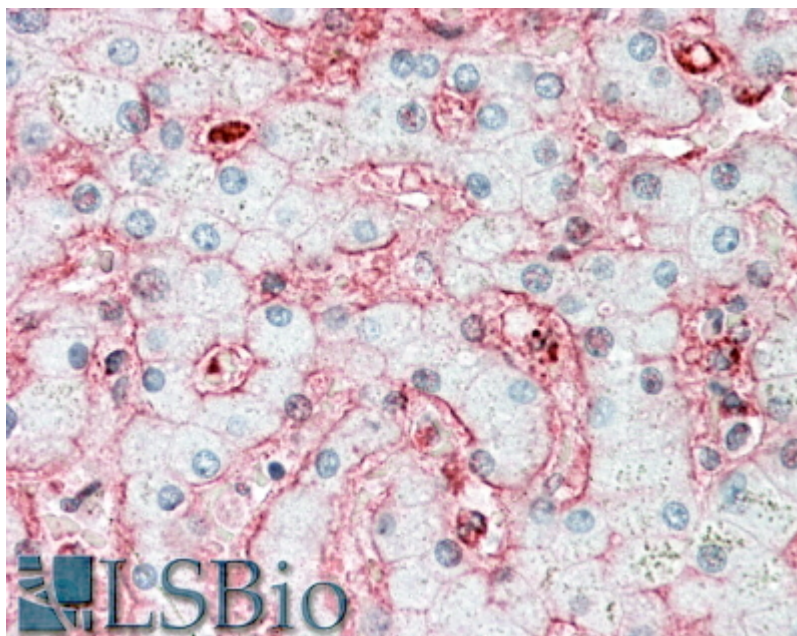
Recommended concentration: 0.1-0.3µg/ml.

**IHC:** In paraffin embedded Human Liver shows membrane staining of hepatocytes and of sinusoidal lining cells. Recommended concentration, 5-10µg/ml.

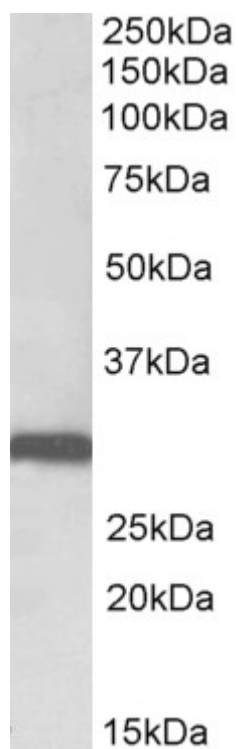
### Species Reactivity

**Tested:** Human

**Expected from sequence similarity:** Human



EB11981 (5µg/ml) staining of paraffin embedded Human Liver. Steamed antigen retrieval with citrate buffer pH 6, AP-staining.



EB11981 (0.1µg/ml) staining of Human Lung lysate (35µg protein in RIPA buffer). Primary incubation was 1 hour. Detected by chemiluminescence.