



UK Office

Everest Biotech Ltd

Cherwell Innovation Centre
77 Heyford Park
Upper Heyford
Oxfordshire
OX25 5HD
UK

Enquiries:

info@everestbiotech.com

Sales:

sales@everestbiotech.com

Tech support:

support@everestbiotech.com

Tel: +44 (0)1869 238326

Fax: +44 (0)1869 238327

US Office

Everest Biotech c/o Abcore

405 Maple Street, Suite A106
Ramona,
CA 92065
USA

Inquiries:

info@everestbiotech.com

Sales:

usasales@everestbiotech.com

Tech support:

support@everestbiotech.com

Tel: 888-320-4628 (toll-free)

Fax: 888-841-9041

www.everestbiotech.com

**Research Use Only. Not for
diagnostic or therapeutic use.**

EB09717 - Goat Anti-Stromal antigen 2 / STAG2 Antibody

Size: 100µg specific antibody in 200µl



Target Protein

Principal Names: STAG2, stromal antigen 2, DKFZp686P168, DKFZp781H1753, FLJ25871, SA-2, SA2, bA517O1.1, OTTHUMP00000024338, OTTHUMP00000043514, OTTHUMP00000043515, OTTHUMP00000081754, OTTHUMP00000081755, SCC3 homolog 2

Official Symbol: STAG2

Accession Number(s): NP_001036214.1; NP_006594.3

Human GeneID(s): [10735](#)

Non-Human GeneID(s): 20843 (mouse), 313304 (rat)

Important Comments: This antibody is expected to recognize both reported isoforms (NP_001036214.1; NP_006594.3). Reported variants NP_001036215.1 and NP_001036214.1 represent identical protein: Reported variants NP_001036216.1 and NP_006594.3 represent identical protein.

Immunogen

Peptide with sequence C-SRGSTVRSKSKPST, from the internal region of the protein sequence according to NP_001036214.1; NP_006594.3.

Please note the [peptide](#) is available for sale.

Purification and Storage

Purified from goat serum by ammonium sulphate precipitation followed by antigen affinity chromatography using the immunizing peptide.

Supplied at 0.5 mg/ml in Tris saline, 0.02% sodium azide, pH7.3 with 0.5% bovine serum albumin.

Aliquot and store at -20°C. Minimize freezing and thawing.

Applications Tested

Peptide ELISA: antibody detection limit dilution 1:32000.

Western blot: Approx 160kDa band observed in lysates of cell line K562 and ~140kDa in rodent Spleen while ~150kDa in Mouse Thymus lysates (calculated MW of 146kDa according to Human NP_001036214.1 and 140kDa according to Mouse NP_001071180.1). Recommended concentration: 0.1-0.3µg/ml.

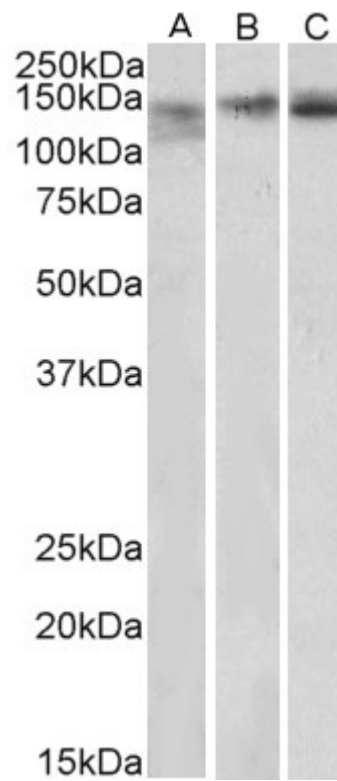
Species Reactivity

Tested: Human, Mouse, Rat

Expected from sequence similarity: Human, Mouse, Rat, Dog, Pig, Cow



EB09717 (0.03 μ g/ml) staining of K562 lysate (35 μ g protein in RIPA buffer). Primary incubation was 1 hour. Detected by chemiluminescence.



EB09717 (0.3 μ g/ml) staining of Mouse Spleen (A), Mouse Thymus (B) and Rat Spleen (C) lysates (35 μ g protein in RIPA buffer). Primary incubation was 1 hour. Detected by chemiluminescence.