



## UK Office

### Everest Biotech Ltd

Cherwell Innovation Centre  
77 Heyford Park  
Upper Heyford  
Oxfordshire  
OX25 5HD  
UK

Enquiries:

[info@everestbiotech.com](mailto:info@everestbiotech.com)

Sales:

[sales@everestbiotech.com](mailto:sales@everestbiotech.com)

Tech support:

[support@everestbiotech.com](mailto:support@everestbiotech.com)

Tel: +44 (0)1869 238326

Fax: +44 (0)1869 238327

## US Office

### Everest Biotech c/o Abcore

405 Maple Street, Suite A106  
Ramona,  
CA 92065  
USA

Inquiries:

[info@everestbiotech.com](mailto:info@everestbiotech.com)

Sales:

[usasales@everestbiotech.com](mailto:usasales@everestbiotech.com)

Tech support:

[support@everestbiotech.com](mailto:support@everestbiotech.com)

Tel: 888-320-4628 (toll-free)

Fax: 888-841-9041

[www.everestbiotech.com](http://www.everestbiotech.com)

**Research Use Only. Not for  
diagnostic or therapeutic use.**

## EB10884 - Goat Anti-STS2 / TULA (aa470-482) Antibody

Size: 100µg specific antibody in 200µl



### Target Protein

**Principal Names:** UBASH3A, ubiquitin associated and SH3 domain containing A, CLIP4, STS-2, TULA, OTTHUMP00000109368, T-cell ubiquitin ligand protein, cbl-interacting protein 4, suppressor of T-cell receptor signaling 2

**Official Symbol:** UBASH3A

**Accession Number(s):** NP\_061834.1; NP\_001001895.1

**Human GeneID(s):** [53347](#)

**Important Comments:** This antibody is expected to recognize both reported isoforms (NP\_061834.1; NP\_001001895.1).

### Immunogen

Peptide with sequence C-DSGIRISSVFASP, from the internal region of the protein sequence according to NP\_061834.1; NP\_001001895.1.

Please note the [peptide](#) is available for sale.

### Purification and Storage

Purified from goat serum by ammonium sulphate precipitation followed by antigen affinity chromatography using the immunizing peptide.

Supplied at 0.5 mg/ml in Tris saline, 0.02% sodium azide, pH7.3 with 0.5% bovine serum albumin.

Aliquot and store at -20°C. Minimize freezing and thawing.

### Applications Tested

**Peptide ELISA:** antibody detection limit dilution 1:8000.

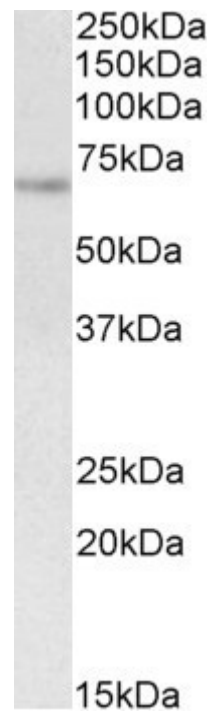
**Western blot:** Approx 70kDa band observed in Human Spleen lysates (calculated MW of 69.8kDa according to NP\_001001895.1). Recommended concentration: 1-3µg/ml.

**IHC:** In paraffin embedded Human Breast shows perinuclear staining in the epithelial cells of the tubules. Recommended concentration, 3-5µg/ml.

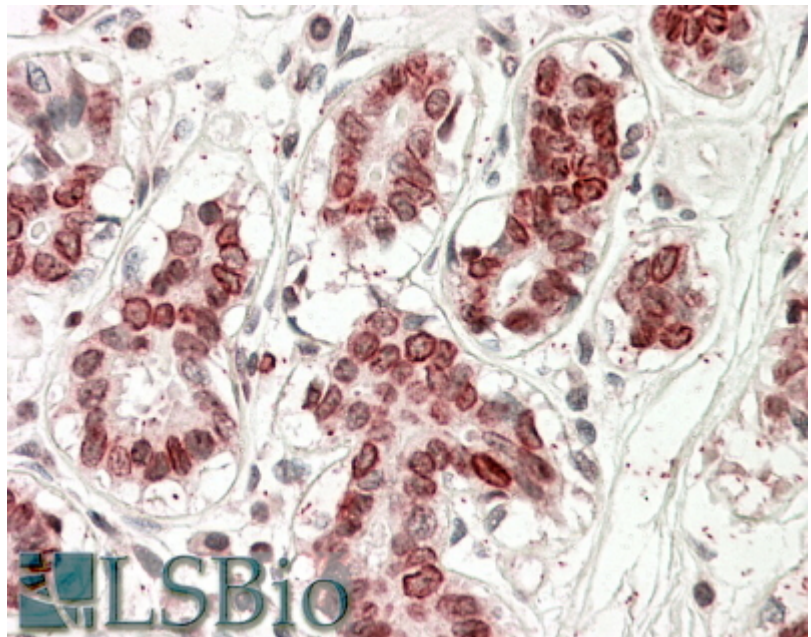
### Species Reactivity

**Tested:** Human

**Expected from sequence similarity:** Human



EB10884 (1 $\mu$ g/ml) staining of Human Spleen lysate (35 $\mu$ g protein in RIPA buffer). Primary incubation was 1 hour. Detected by chemiluminescence.



EB10884 (3.8 $\mu$ g/ml) staining of paraffin embedded Human Breast. Steamed antigen retrieval with citrate buffer pH 6, AP-staining.