



UK Office

Everest Biotech Ltd

Cherwell Innovation Centre
77 Heyford Park
Upper Heyford
Oxfordshire
OX25 5HD
UK

Enquiries:

info@everestbiotech.com

Sales:

sales@everestbiotech.com

Tech support:

support@everestbiotech.com

Tel: +44 (0)1869 238326

Fax: +44 (0)1869 238327

US Office

Everest Biotech c/o Abcore

405 Maple Street, Suite A106
Ramona,
CA 92065
USA

Inquiries:

info@everestbiotech.com

Sales:

usasales@everestbiotech.com

Tech support:

support@everestbiotech.com

Tel: 888-320-4628 (toll-free)

Fax: 888-841-9041

www.everestbiotech.com

**Research Use Only. Not for
diagnostic or therapeutic use.**

EB07594 - Goat Anti-STS2 / TULA (internal) Antibody

Size: 100µg specific antibody in 200µl



Target Protein

Principal Names: TULA, STS2 CBL-interacting protein 4, UBASH3A, ubiquitin associated and SH3 domain containing, A, T-cell ubiquitin ligand protein, Suppressor of T-cell receptor signaling 2, CLIP4

Official Symbol: UBASH3A

Accession Number(s): NP_061834.1; NP_001001895.1

Human GeneID(s): [53347](#)

Important Comments: This antibody is expected to recognize both reported isoforms (NP_061834.1 and NP_001001895.1).

Immunogen

Peptide with sequence QQCSTPDGKYRDP, from the internal region of the protein sequence according to NP_061834.1; NP_001001895.1.

Please note the [peptide](#) is available for sale.

Purification and Storage

Purified from goat serum by ammonium sulphate precipitation followed by antigen affinity chromatography using the immunizing peptide.

Supplied at 0.5 mg/ml in Tris saline, 0.02% sodium azide, pH7.3 with 0.5% bovine serum albumin.

Aliquot and store at -20°C. Minimize freezing and thawing.

Applications Tested

Peptide ELISA: antibody detection limit dilution 1:64000.

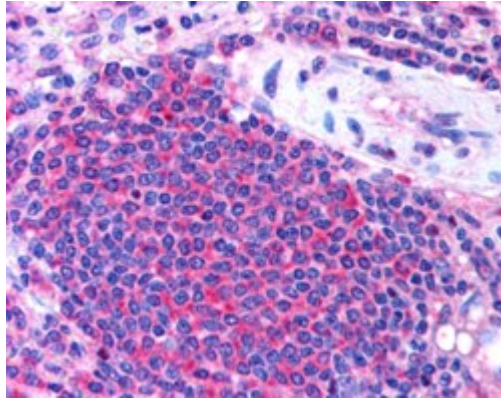
Western blot: Preliminary experiments gave an approx 48kDa band in lysates of B-cell line Daudi after 0.1µg/ml antibody staining. Please note that currently we cannot find an explanation in the literature for the band we observe given the calculated size of 74.1kDa according to NP_061834.1 and 69.8kDa according to NP_001001895.1. The 48kDa band was successfully blocked by incubation with the immunizing peptide.

IHC: In paraffin embedded Human Spleen shows cytoplasm staining of T-cells eccentrically gathered around an artery. Recommended concentration: 2.5µg/ml.

Species Reactivity

Tested: Human

Expected from sequence similarity: Human, Dog



EB07594 (2.5µg/ml) staining of paraffin embedded Human Spleen. Steamed antigen retrieval with citrate buffer pH 6, AP-staining.