



## UK Office

### Everest Biotech Ltd

Cherwell Innovation Centre  
77 Heyford Park  
Upper Heyford  
Oxfordshire  
OX25 5HD  
UK

Enquiries:

[info@everestbiotech.com](mailto:info@everestbiotech.com)

Sales:

[sales@everestbiotech.com](mailto:sales@everestbiotech.com)

Tech support:

[support@everestbiotech.com](mailto:support@everestbiotech.com)

Tel: +44 (0)1869 238326

Fax: +44 (0)1869 238327

## US Office

### Everest Biotech c/o Abcore

405 Maple Street, Suite A106  
Ramona,  
CA 92065  
USA

Inquiries:

[info@everestbiotech.com](mailto:info@everestbiotech.com)

Sales:

[usasales@everestbiotech.com](mailto:usasales@everestbiotech.com)

Tech support:

[support@everestbiotech.com](mailto:support@everestbiotech.com)

Tel: 888-320-4628 (toll-free)

Fax: 888-841-9041

[www.everestbiotech.com](http://www.everestbiotech.com)

**Research Use Only. Not for  
diagnostic or therapeutic use.**

## EB05327 - Goat Anti-STUB1 / CHIP Antibody

Size: 100µg specific antibody in 200µl



### Target Protein

**Principal Names:** STUB1, CHIP, STIP1 homology and U-Box containing protein 1, HSPABP2, NY-CO-7, SDCCAG7, serologically defined colon cancer antigen 7, carboxy terminus of Hsp70p-interacting protein, heat shock protein A binding protein 2 (c-terminal), LA16c-313D11.6, UBOX1

**Official Symbol:** STUB1

**Accession Number(s):** NP\_005852.2

**Human GeneID(s):** [10273](#)

### Immunogen

Peptide with sequence C-DAFISENGWVEDY, from the C Terminus of the protein sequence according to NP\_005852.2.

Please note the [peptide](#) is available for sale.

### Purification and Storage

Purified from goat serum by ammonium sulphate precipitation followed by antigen affinity chromatography using the immunizing peptide.

Supplied at 0.5 mg/ml in Tris saline, 0.02% sodium azide, pH7.3 with 0.5% bovine serum albumin.

Aliquot and store at -20°C. Minimize freezing and thawing.

### Applications Tested

**Peptide ELISA:** antibody detection limit dilution 1:64000.

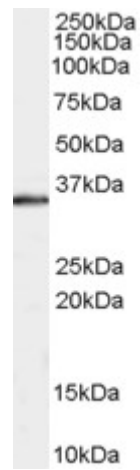
**Western blot:** Approx 35kDa band observed in Human Muscle lysates (calculated MW of 34.9kDa according to NP\_005852.2). Recommended concentration: 0.3-1µg/ml. Primary incubation was for 1 hour.

**IHC:** Paraffin embedded Human Kidney. Recommended concentration: 5-6µg/ml.

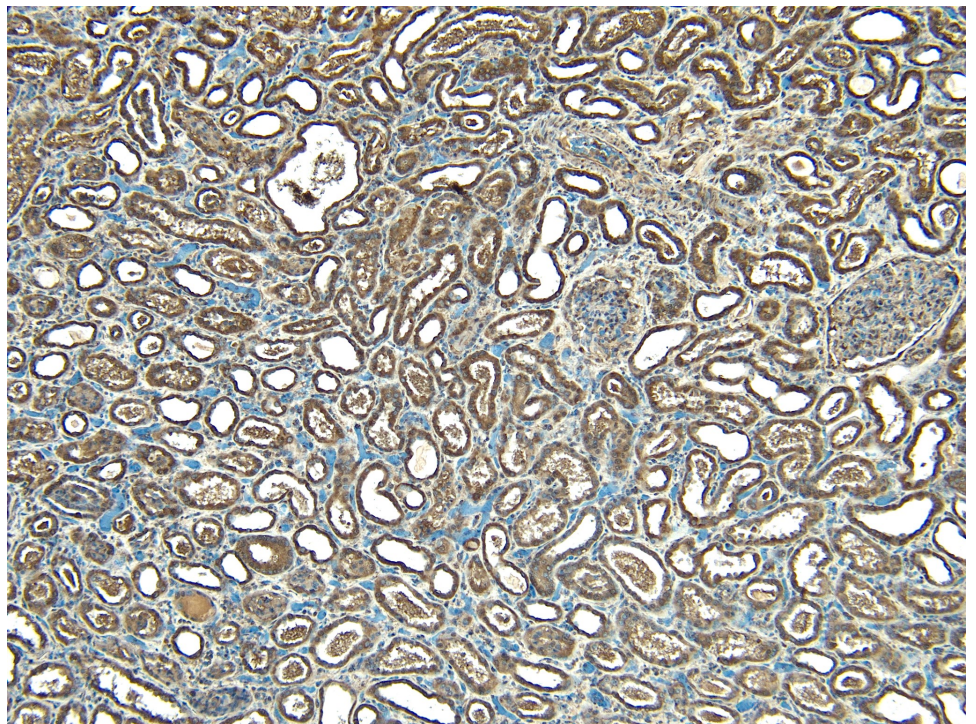
### Species Reactivity

**Tested:** Human

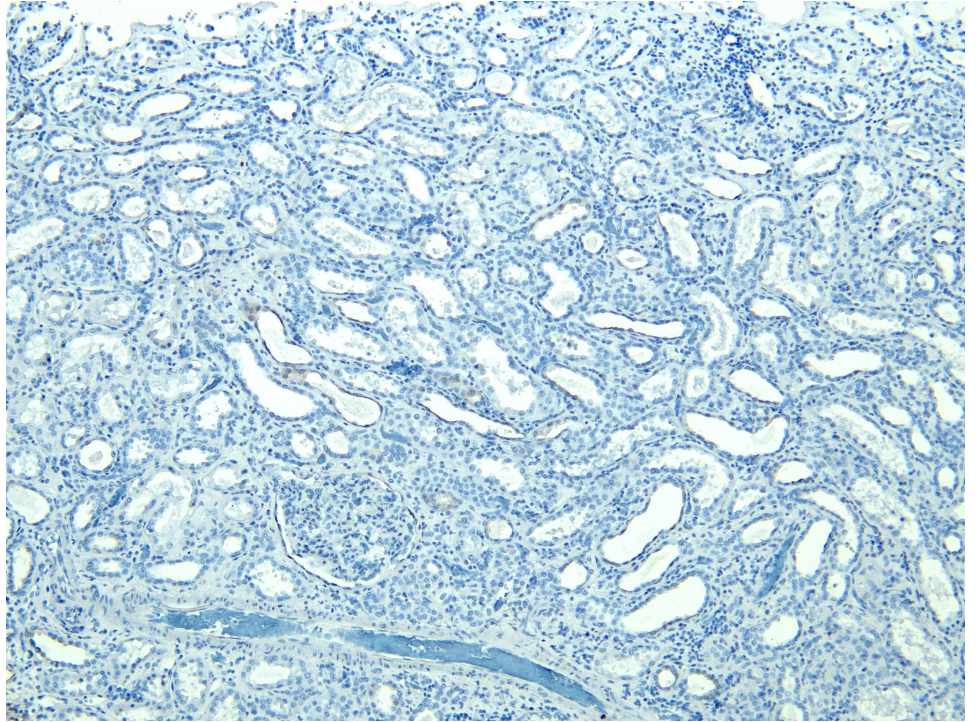
**Expected from sequence similarity:** Human, Mouse, Rat, Dog, Cow



EB05327 staining (0.3 $\mu$ g/ml) of Human Muscle lysate (RIPA buffer, 35 $\mu$ g total protein per lane). Detected by chemiluminescence.



EB05327 (5 $\mu$ g/ml) staining of paraffin embedded Human Kidney. Heat induced antigen retrieval with citrate buffer pH 6, HRP-staining.



EB05327 Negative Control showing staining of paraffin embedded Human Kidney, with no primary antibody.