



Everest Biotech Ltd
Cherwell Innovation Centre
77 Heyford Park
Upper Heyford
Oxfordshire
OX25 5HD, United Kingdom

everestbiotech.com

sales@everestbiotech.com

support@everestbiotech.com

Tel +44 1869 238326

Fax +44 1869 238327

Research Use Only. Not for diagnostic or therapeutic use.

Storage: For long-term storage keep aliquots at -20°C. (Store no longer than 12 months at 4°C). Minimize freezing and thawing.

EB09199 - Goat Anti-SULF1 Antibody

Size: 100µg specific antibody in 200µl



Target Protein

Principal Names: sulfatase FP, SULF-1, KIAA1077, HSULF-1, FLJ41750, FLJ38022, FLJ30905, sulfatase 1, SULF1

Official Symbol: SULF1

Accession Number(s): NP_055985.2

Human GeneID(s): [23213](#)

Non-Human GeneID(s): 240725 (mouse), 171396 (rat)

Important Comments: Reported variants represent identical protein: NP_055985.2, NP_001121676.1, NP_001121678.1, NP_001121677.1.

Immunogen

Peptide with sequence C-QSYYNKEKGVKKQ, from the internal region of the protein sequence according to NP_055985.2.

Please note the [peptide](#) is available for sale.

Purification and Storage

Purified from goat serum by ammonium sulphate precipitation followed by antigen affinity chromatography using the immunizing peptide.

Supplied at 0.5 mg/ml in Tris saline, 0.02% sodium azide, pH7.3 with 0.5% bovine serum albumin.

Aliquot and store at -20°C. Minimize freezing and thawing.

Applications Tested

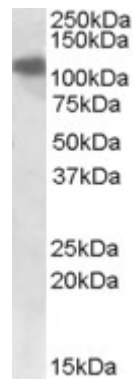
Peptide ELISA: antibody detection limit dilution 1:16000.

Western blot: Approx. 110kDa band observed in Human Testis lysates (calculated MW of 101kDa according to NP_055985.2). Recommended concentration: 1-3µg/ml.

Species Reactivity

Tested: Human

Expected from sequence similarity: Human, Mouse, Rat, Dog



EB09199 (1 μ g/ml) staining of Human Testis lysate (35 μ g protein in RIPA buffer). Primary incubation was 1 hour.
Detected by chemiluminescence.