



## UK Office

### Everest Biotech Ltd

Cherwell Innovation Centre  
77 Heyford Park  
Upper Heyford  
Oxfordshire  
OX25 5HD  
UK

Enquiries:

[info@everestbiotech.com](mailto:info@everestbiotech.com)

Sales:

[sales@everestbiotech.com](mailto:sales@everestbiotech.com)

Tech support:

[support@everestbiotech.com](mailto:support@everestbiotech.com)

Tel: +44 (0)1869 238326

[www.everestbiotech.com](http://www.everestbiotech.com)

**Research Use Only. Not for  
diagnostic or therapeutic use.**

## EB09607 - Goat Anti-SUMF1 Antibody

Size: 100µg specific antibody in 200µl



### Target Protein

**Principal Names:** SUMF1, sulfatase modifying factor 1, AAPA3037, FGE, MGC131853, MGC150436, C-alpha-formylglycine-generating enzyme, OTTHUMP00000115300

**Official Symbol:** SUMF1

**Accession Number(s):** NP\_877437.2

**Human GeneID(s):** [285362](#)

**Non-Human GeneID(s):** 58911 (mouse), 362409 (rat)

### Immunogen

Peptide with sequence C-ETLNPKGPPSGKDR, from the internal region of the protein sequence according to NP\_877437.2.

Please note the [peptide](#) is available for sale.

### Purification and Storage

Purified from goat serum by ammonium sulphate precipitation followed by antigen affinity chromatography using the immunizing peptide.

Supplied at 0.5 mg/ml in Tris saline, 0.02% sodium azide, pH7.3 with 0.5% bovine serum albumin.

Aliquot and store at -20°C. Minimize freezing and thawing.

### Applications Tested

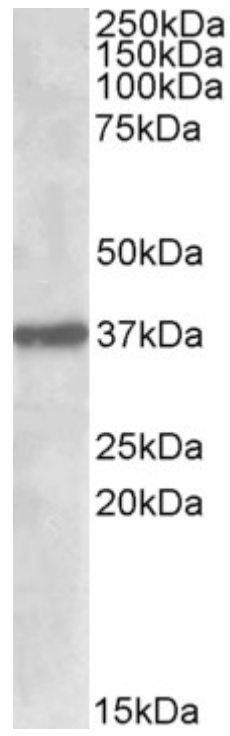
**Peptide ELISA:** antibody detection limit dilution 1:16000.

**Western blot:** Approx 37-40kDa band observed in Mouse Pancreas, Mouse Eye and Human Kidney lysates (calculated MW of 40.6kDa according to Human NP\_877437.2 and 40.6kDa according to Mouse NP\_666049.2). Recommended concentration: 0.5-2µg/ml.

### Species Reactivity

**Tested:** Human, Mouse

**Expected from sequence similarity:** Human, Mouse, Rat, Dog, Cow



EB09607 (1 $\mu$ g/ml) staining of Mouse Pancreas lysate (35 $\mu$ g protein in RIPA buffer). Primary incubation was 1 hour. Detected by chemiluminescence.