



UK Office

Everest Biotech Ltd

Cherwell Innovation Centre
77 Heyford Park
Upper Heyford
Oxfordshire
OX25 5HD
UK

Enquiries:

info@everestbiotech.com

Sales:

sales@everestbiotech.com

Tech support:

support@everestbiotech.com

Tel: +44 (0)1869 238326

Fax: +44 (0)1869 238327

US Office

Everest Biotech c/o Abcore

405 Maple Street, Suite A106
Ramona,
CA 92065
USA

Inquiries:

info@everestbiotech.com

Sales:

usasales@everestbiotech.com

Tech support:

support@everestbiotech.com

Tel: 888-320-4628 (toll-free)

Fax: 888-841-9041

www.everestbiotech.com

**Research Use Only. Not for
diagnostic or therapeutic use.**

EB06448 - Goat Anti-Survivin / BIRC5 Antibody

Size: 100µg specific antibody in 200µl



Target Protein

Principal Names: BIRC5, survivin, API4, EPR-1, baculoviral IAP repeat-containing 5 (survivin), apoptosis inhibitor 4, baculoviral IAP repeat-containing 5, baculoviral IAP repeat-containing protein 5, survivin variant 3 alpha

Official Symbol: BIRC5

Accession Number(s): NP_001159.2; NP_001012271.1

Human GeneID(s): [332](#)

Important Comments: This antibody is expected to recognize the reported isoforms 1 (NP_001159.2) and isoform 3 (NP_001012271.1).

Immunogen

Peptide with sequence CVRRAIEQLAAMD, from the C Terminus of the protein sequence according to NP_001159.2; NP_001012271.1.

Please note the [peptide](#) is available for sale.

Purification and Storage

Purified from goat serum by ammonium sulphate precipitation followed by antigen affinity chromatography using the immunizing peptide.

Supplied at 0.5 mg/ml in Tris saline, 0.02% sodium azide, pH7.3 with 0.5% bovine serum albumin.

Aliquot and store at -20°C. Minimize freezing and thawing.

Applications Tested

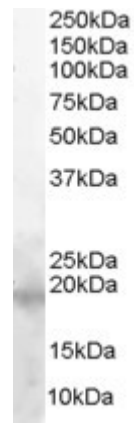
Peptide ELISA: antibody detection limit dilution 1:16000.

Western blot: Approx 18kDa band observed in Human T cell line MOLT4 lysates (calculated MW of 16.4kDa according to NP_001159.2 and 18.6kDa according to NP_001012271.1). Recommended concentration: 0.01-0.5µg/ml.

Species Reactivity

Tested: Human

Expected from sequence similarity: Human, Cat, Dog, Pig, Cow



EB06448 (0.01µg/ml) staining of Molt-4 lysate (35µg protein in RIPA buffer). Primary incubation was 1 hour.
Detected by chemiluminescence.