



## UK Office

### Everest Biotech Ltd

Cherwell Innovation Centre  
77 Heyford Park  
Upper Heyford  
Oxfordshire  
OX25 5HD  
UK

Enquiries:

[info@everestbiotech.com](mailto:info@everestbiotech.com)

Sales:

[sales@everestbiotech.com](mailto:sales@everestbiotech.com)

Tech support:

[support@everestbiotech.com](mailto:support@everestbiotech.com)

Tel: +44 (0)1869 238326

Fax: +44 (0)1869 238327

## US Office

### Everest Biotech c/o Abcore

405 Maple Street, Suite A106  
Ramona,  
CA 92065  
USA

Inquiries:

[info@everestbiotech.com](mailto:info@everestbiotech.com)

Sales:

[usasales@everestbiotech.com](mailto:usasales@everestbiotech.com)

Tech support:

[support@everestbiotech.com](mailto:support@everestbiotech.com)

Tel: 888-320-4628 (toll-free)

Fax: 888-841-9041

[www.everestbiotech.com](http://www.everestbiotech.com)

**Research Use Only. Not for  
diagnostic or therapeutic use.**

## EB11148 - Goat Anti-SYNGAP1 (aa60-72) Antibody

Size: 100µg specific antibody in 200µl



### Target Protein

**Principal Names:** DKFZp761G1421, KIAA1938, MRD5, neuronal RasGAP, OTTHUMP00000209046, ras GTPase-activating protein SynGAP, RASA1, RASA5, synaptic Ras GTPase activating protein 1, synaptic Ras GTPase activating protein 1 homolog, synaptic Ras GTPase activating protein, 135kDa, synaptic Ras GTPase-activating protein 1, SYNGAP, SYNGAP1

**Official Symbol:** SYNGAP1

**Accession Number(s):** NP\_006763.2

**Human GeneID(s):** [8831](#)

**Non-Human GeneID(s):** 240057 (mouse), 192117 (rat)

### Immunogen

Peptide with sequence DEDEIHPLLIRDR-C, from the N Terminus of the protein sequence according to NP\_006763.2.

Please note the [peptide](#) is available for sale.

### Purification and Storage

Purified from goat serum by ammonium sulphate precipitation followed by antigen affinity chromatography using the immunizing peptide.

Supplied at 0.5 mg/ml in Tris saline, 0.02% sodium azide, pH7.3 with 0.5% bovine serum albumin.

Aliquot and store at -20°C. Minimize freezing and thawing.

### Applications Tested

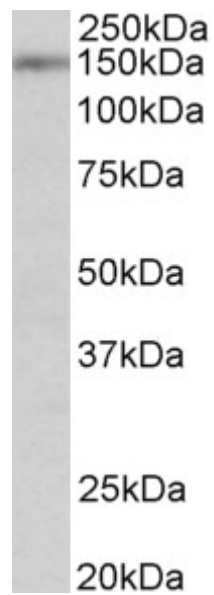
**Peptide ELISA:** antibody detection limit dilution 1:32000.

**Western blot:** Approx 150kDa band observed in Mouse Brain lysates (calculated MW of 148kDa according to Human NP\_006763.2 and Mouse XP\_990642.3). Recommended concentration: 1-3µg/ml.

### Species Reactivity

**Tested:** Mouse

**Expected from sequence similarity:** Human, Mouse, Rat, Dog, Pig, Cow



EB11148 (2 $\mu$ g/ml) staining of Mouse Brain lysate (35 $\mu$ g protein in RIPA buffer). Primary incubation was 1 hour.  
Detected by chemiluminescence.