



UK Office

Everest Biotech Ltd

Cherwell Innovation Centre
77 Heyford Park
Upper Heyford
Oxfordshire
OX25 5HD
UK

Enquiries:

info@everestbiotech.com

Sales:

sales@everestbiotech.com

Tech support:

support@everestbiotech.com

Tel: +44 (0)1869 238326

Fax: +44 (0)1869 238327

US Office

Everest Biotech c/o Abcore

405 Maple Street, Suite A106
Ramona,
CA 92065
USA

Inquiries:

info@everestbiotech.com

Sales:

usasales@everestbiotech.com

Tech support:

support@everestbiotech.com

Tel: 888-320-4628 (toll-free)

Fax: 888-841-9041

www.everestbiotech.com

**Research Use Only. Not for
diagnostic or therapeutic use.**

EB07470 - Goat Anti-Syntenin / SDCBP Antibody

Size: 100µg specific antibody in 200µl



Target Protein

Principal Names: SDCBP, Syntenin, syndecan binding protein (syntenin), MDA-9, ST1, SYCL, TACIP18, melanoma differentiation associated protein-9, pro-TGF-alpha cytoplasmic domain-interacting protein 18, scaffold protein Pbp1 syntenin

Official Symbol: SDCBP

Accession Number(s): NP_005616.2; NP_001007068.1; NP_001007069; NP_001007070.1; NP_001007071.1

Human GeneID(s): [6386](#)

Non-Human GeneID(s): 53378 (mouse), 83841 (rat)

Important Comments: This antibody is expected to recognise isoform 1 (NP_005616.2 and NP_001007068.1) and isoform 3 (NP_001007070.1 and NP_001007071.1) only.

Immunogen

Peptide with sequence SLEDLKVDKVIQAQ-C, from the N Terminus of the protein sequence according to NP_005616.2; NP_001007068.1; NP_001007069; NP_001007070.1; NP_001007071.1.

Please note the [peptide](#) is available for sale.

Purification and Storage

Purified from goat serum by ammonium sulphate precipitation followed by antigen affinity chromatography using the immunizing peptide.

Supplied at 0.5 mg/ml in Tris saline, 0.02% sodium azide, pH7.3 with 0.5% bovine serum albumin.

Aliquot and store at -20°C. Minimize freezing and thawing.

Applications Tested

Peptide ELISA: antibody detection limit dilution 1:128000.

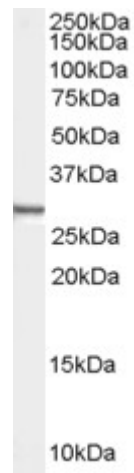
Western blot: Approx 28-30kDa band observed in lysates of cell lines HEK293 and A431 (calculated MW of 32.4kDa according to NP_005616.2 and NP_001007068.1 and of 32.3kDa according to NP_001007070.1 and NP_001007071.1). Recommended concentration: 0.01-0.03µg/ml. Primary incubation was 1 hour.

IHC: Paraffin embedded Human Breast. Recommended concentration: 10µg/ml.

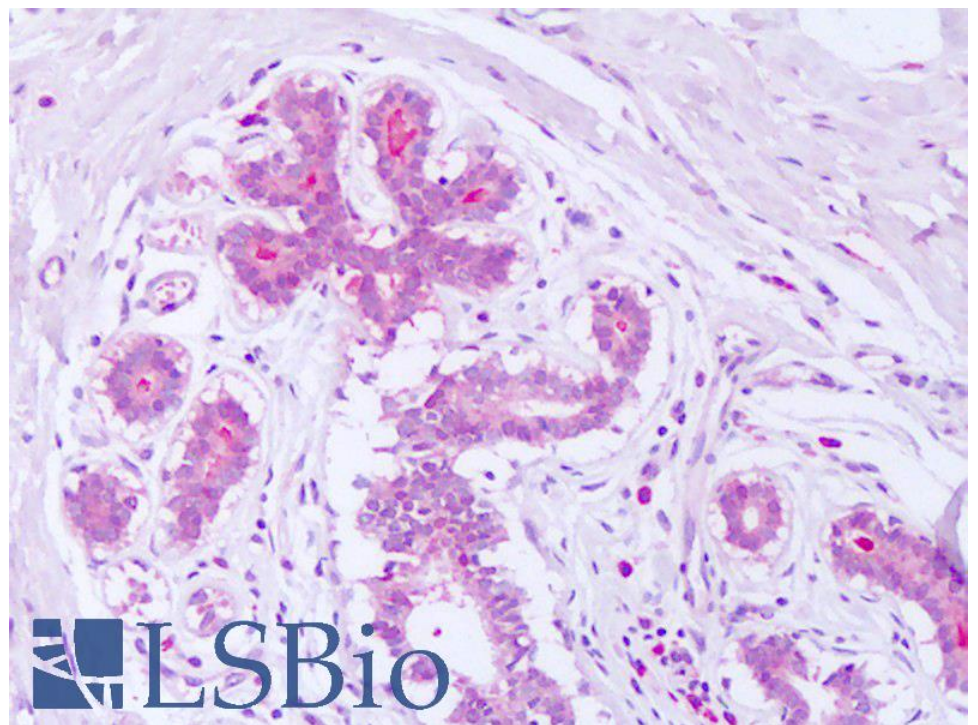
Species Reactivity

Tested: Human

Expected from sequence similarity: Human, Mouse, Rat, Dog



EB07470 (0.01 μ g/ml) staining of Human HEK293 cell lysate (35 μ g protein in RIPA buffer). Detected by chemiluminescence.



EB07470 (10 μ g/ml) staining of paraffin embedded Human Breast. Steamed antigen retrieval with citrate buffer pH 6, AP-staining.