

UK Office

Everest Biotech Ltd

Cherwell Innovation Centre
77 Heyford Park
Upper Heyford
Oxfordshire
OX25 5HD
UK

Enquiries:

info@everestbiotech.com

Sales:

sales@everestbiotech.com

Tech support:

support@everestbiotech.com

Tel: +44 (0)1869 238326

www.everestbiotech.com

**Research Use Only. Not for
diagnostic or therapeutic use.**

EB09821 - Goat Anti-SYVN1 Antibody

Size: 100µg specific antibody in 200µl



Target Protein

Principal Names: HRD1, KIAA1810, MGC40372, synovial apoptosis inhibitor 1, synoviolin, synoviolin 1, SYVN1

Official Symbol: SYVN1

Accession Number(s): NP_115807.1; NP_757385.1

Human GeneID(s): [84447](#)

Non-Human GeneID(s): 361712 (rat)

Important Comments: This antibody is expected to recognize isoforms a and b (NP_115807.1; NP_757385.1).

Immunogen

Peptide with sequence C-HERQHLEARLQS, from the internal region of the protein sequence according to NP_115807.1; NP_757385.1.

Please note the [peptide](#) is available for sale.

Purification and Storage

Purified from goat serum by ammonium sulphate precipitation followed by antigen affinity chromatography using the immunizing peptide.

Supplied at 0.5 mg/ml in Tris saline, 0.02% sodium azide, pH7.3 with 0.5% bovine serum albumin.

Aliquot and store at -20°C. Minimize freezing and thawing.

Applications Tested

Peptide ELISA: antibody detection limit dilution 1:32000.

Western blot: Approx 70kDa band observed in Human Cerebellum and Rat Lung lysates (calculated MW of 67.6kDa according to Human NP_115807.1 and 66.9kDa according to Rat NP_001094209.1). Recommended concentration: 1-3µg/ml. Primary incubation 1 hour at room temperature

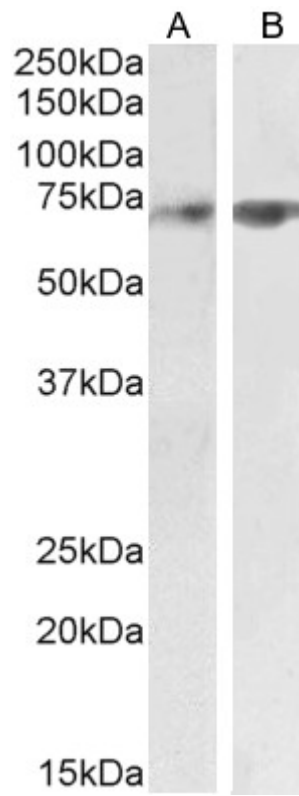
Immunofluorescence: Strong expression of the protein seen in the nuclei and endoplasmic reticulum of A431 cells. Recommended concentration: 10µg/ml.

Flow Cytometry: Flow cytometric analysis of A431 cells. Recommended concentration: 10µg/ml.

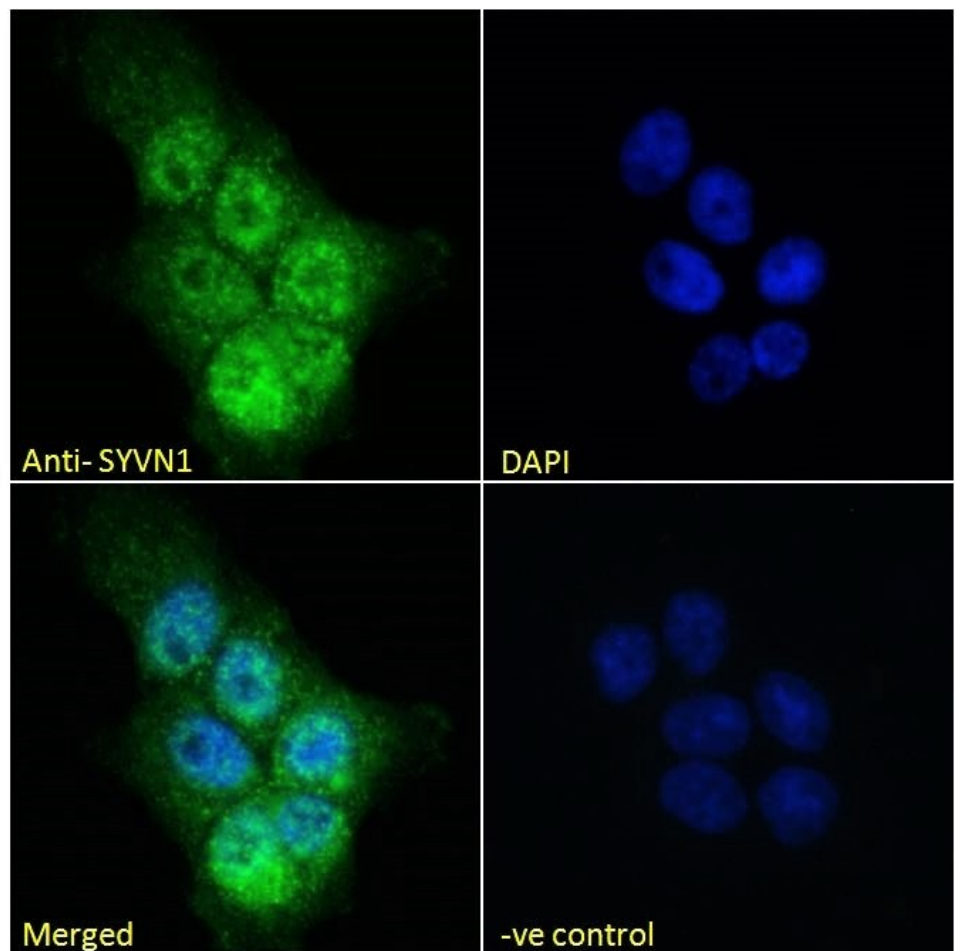
Species Reactivity

Tested: Human, Rat

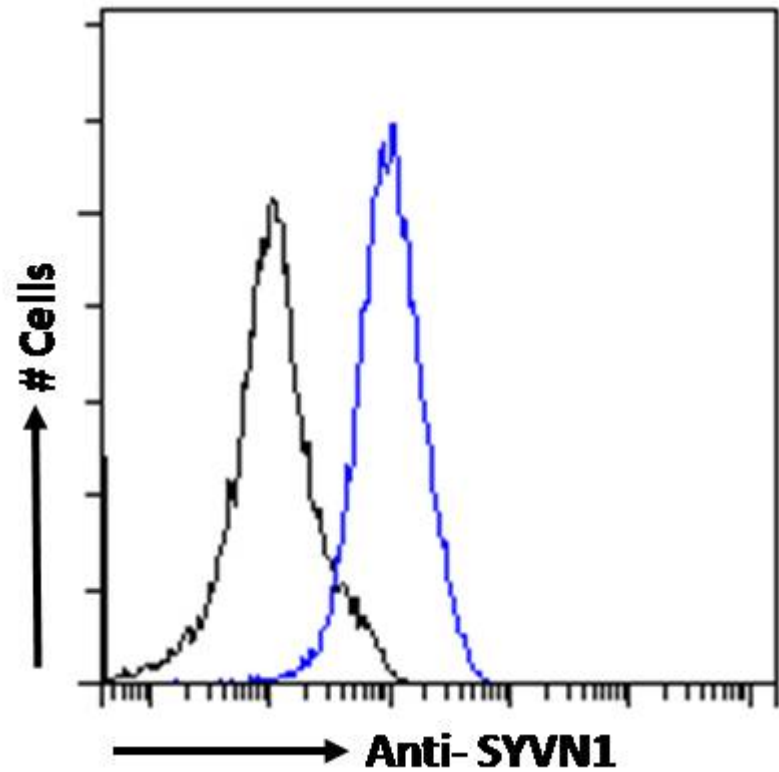
Expected from sequence similarity: Human, Mouse, Rat, Dog



EB09821 (2 μ g/ml) staining of Human Cerebellum (A) and Rat Lung (B) lysate (35 μ g protein in RIPA buffer). Detected by chemiluminescence.



EB09821 Immunofluorescence analysis of paraformaldehyde fixed A431 cells, permeabilized with 0.15% Triton. Primary incubation 1hr (10ug/ml) followed by Alexa Fluor 488 secondary antibody (2ug/ml), showing nuclear and endoplasmic reticulum staining. The nuclear stain is DAPI (blue). Negative control: Unimmunized goat IgG (10ug/ml) followed by Alexa Fluor 488 secondary antibody (2ug/ml).



EB09821 Flow cytometric analysis of paraformaldehyde fixed A431 cells (blue line), permeabilized with 0.5% Triton. Primary incubation 1hr (10ug/ml) followed by Alexa Fluor 488 secondary antibody (1ug/ml). IgG control: Unimmunized goat IgG (black line) followed by Alexa Fluor 488 secondary antibody.