

## UK Office

### Everest Biotech Ltd

Cherwell Innovation Centre  
77 Heyford Park  
Upper Heyford  
Oxfordshire  
OX25 5HD  
UK

Enquiries:

[info@everestbiotech.com](mailto:info@everestbiotech.com)

Sales:

[sales@everestbiotech.com](mailto:sales@everestbiotech.com)

Tech support:

[support@everestbiotech.com](mailto:support@everestbiotech.com)

Tel: +44 (0)1869 238326

[www.everestbiotech.com](http://www.everestbiotech.com)

**Research Use Only. Not for  
diagnostic or therapeutic use.**

## EB07771 - Goat Anti-TACR1 Antibody

Size: 100µg specific antibody in 200µl



### Target Protein

**Principal Names:** TACR1, tachykinin receptor 1, NK1R, neurokinin 1 receptor, NK1R, SPR, TAC1R, NK-1 receptor, Tachykinin receptor 1 (substance P receptor, neurokinin-1 receptor), neurokinin 1 receptor, tachykinin 1 receptor (substance P receptor, neurokinin 1 receptor)

**Official Symbol:** TACR1

**Accession Number(s):** NP\_001049.1\*; NP\_056542.1\*

**Human GeneID(s):** [6869](#)

**Non-Human GeneID(s):** 21336 (mouse), 24807 (rat)

**Important Comments:** This antibody is expected to recognise both reported isoforms (NP\_001049.1 and NP\_056542.1).

### Immunogen

Peptide with sequence C-EIPGDSSDRYHEQ, from the internal region of the protein sequence according to NP\_001049.1\*; NP\_056542.1\*.

Please note the [peptide](#) is available for sale.

### Purification and Storage

Purified from goat serum by ammonium sulphate precipitation followed by antigen affinity chromatography using the immunizing peptide.

Supplied at 0.5 mg/ml in Tris saline, 0.02% sodium azide, pH7.3 with 0.5% bovine serum albumin.

Aliquot and store at -20°C. Minimize freezing and thawing.

### Applications Tested

**Peptide ELISA:** antibody detection limit dilution 1:128000.

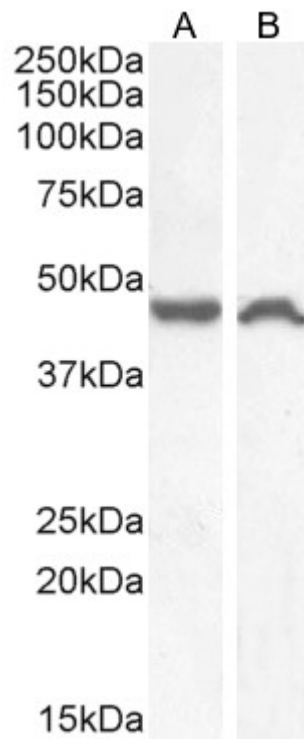
**Western blot:** Approx 48kDa band observed in lysates of cell lines HeLa and Neuro2a (calculated MW of 46.3kDa according to Human NP\_001049.1 and Mouse NP\_033339.2). Recommended concentration: 0.3-1µg/ml.. Primary incubation 1 hour at room temperature.

**Immunofluorescence:** Expression of the protein seen in the plasma membrane and nucleus of Neuro2a cells. Recommended concentration: 10µg/ml.

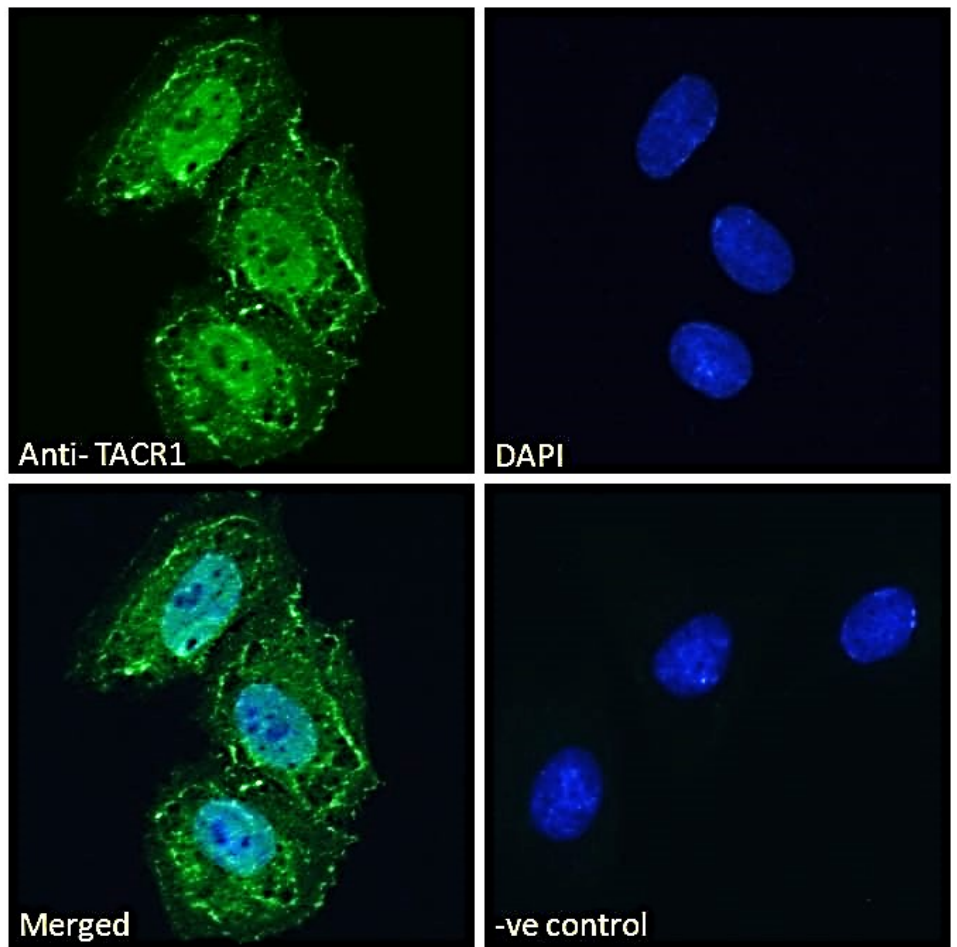
### Species Reactivity

**Tested:** Human, Mouse

**Expected from sequence similarity:** Human, Mouse, Dog



EB07771 (1µg/ml) staining of HeLa (A) and (0.5ug/ml) Neuro2a (B) cell lysate (35µg protein in RIPA buffer). Detected by chemiluminescence.



EB07771 Immunofluorescence analysis of paraformaldehyde fixed Neuro2a cells, permeabilized with 0.15% Triton. Primary incubation 1hr (10ug/ml) followed by Alexa Fluor 488 secondary antibody (2ug/ml), showing nuclear and plasma membrane staining. The nuclear stain is DAPI (blue). Negative control: Unimmunized goat

IgG (10ug/ml) followed by Alexa Fluor 488 secondary antibody (2ug/ml).