



UK Office

Everest Biotech Ltd

Cherwell Innovation Centre
77 Heyford Park
Upper Heyford
Oxfordshire
OX25 5HD
UK

Enquiries:

info@everestbiotech.com

Sales:

sales@everestbiotech.com

Tech support:

support@everestbiotech.com

Tel: +44 (0)1869 238326

Fax: +44 (0)1869 238327

US Office

Everest Biotech c/o Abcore

405 Maple Street, Suite A106
Ramona,
CA 92065
USA

Inquiries:

info@everestbiotech.com

Sales:

usasales@everestbiotech.com

Tech support:

support@everestbiotech.com

Tel: 888-320-4628 (toll-free)

Fax: 888-841-9041

www.everestbiotech.com

**Research Use Only. Not for
diagnostic or therapeutic use.**

EB07771 - Goat Anti-TACR1 Antibody

Size: 100µg specific antibody in 200µl



Target Protein

Principal Names: TACR1, tachykinin receptor 1, NK1R, neurokinin 1 receptor, NK1R, SPR, TAC1R, NK-1 receptor, Tachykinin receptor 1 (substance P receptor, neurokinin-1 receptor), neurokinin 1 receptor, tachykinin 1 receptor (substance P receptor, neurokinin 1 receptor)

Official Symbol: TACR1

Accession Number(s): NP_001049.1*; NP_056542.1*

Human GeneID(s): [6869](#)

Non-Human GeneID(s): 21336 (mouse), 24807 (rat)

Important Comments: This antibody is expected to recognise both reported isoforms (NP_001049.1 and NP_056542.1).

Immunogen

Peptide with sequence C-EIPGDSSDRYHEQ, from the internal region of the protein sequence according to NP_001049.1*; NP_056542.1*.

Please note the [peptide](#) is available for sale.

Purification and Storage

Purified from goat serum by ammonium sulphate precipitation followed by antigen affinity chromatography using the immunizing peptide.

Supplied at 0.5 mg/ml in Tris saline, 0.02% sodium azide, pH7.3 with 0.5% bovine serum albumin.

Aliquot and store at -20°C. Minimize freezing and thawing.

Applications Tested

Peptide ELISA: antibody detection limit dilution 1:128000.

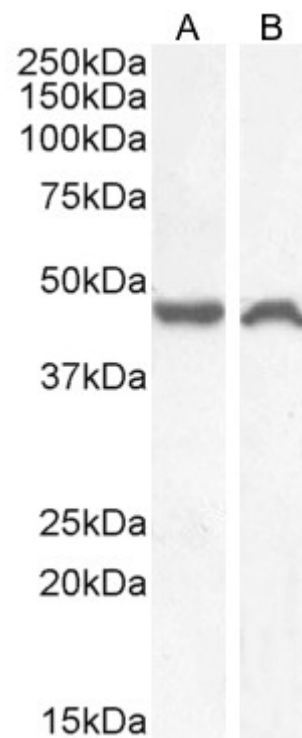
Western blot: Approx 48kDa band observed in lysates of cell lines HeLa and Neuro2a (calculated MW of 46.3kDa according to Human NP_001049.1 and Mouse NP_033339.2). Recommended concentration: 0.3-1µg/ml. Primary incubation 1 hour at room temperature.

Immunofluorescence: Expression of the protein seen in the plasma membrane and nucleus of Neuro2a cells. Recommended concentration: 10µg/ml.

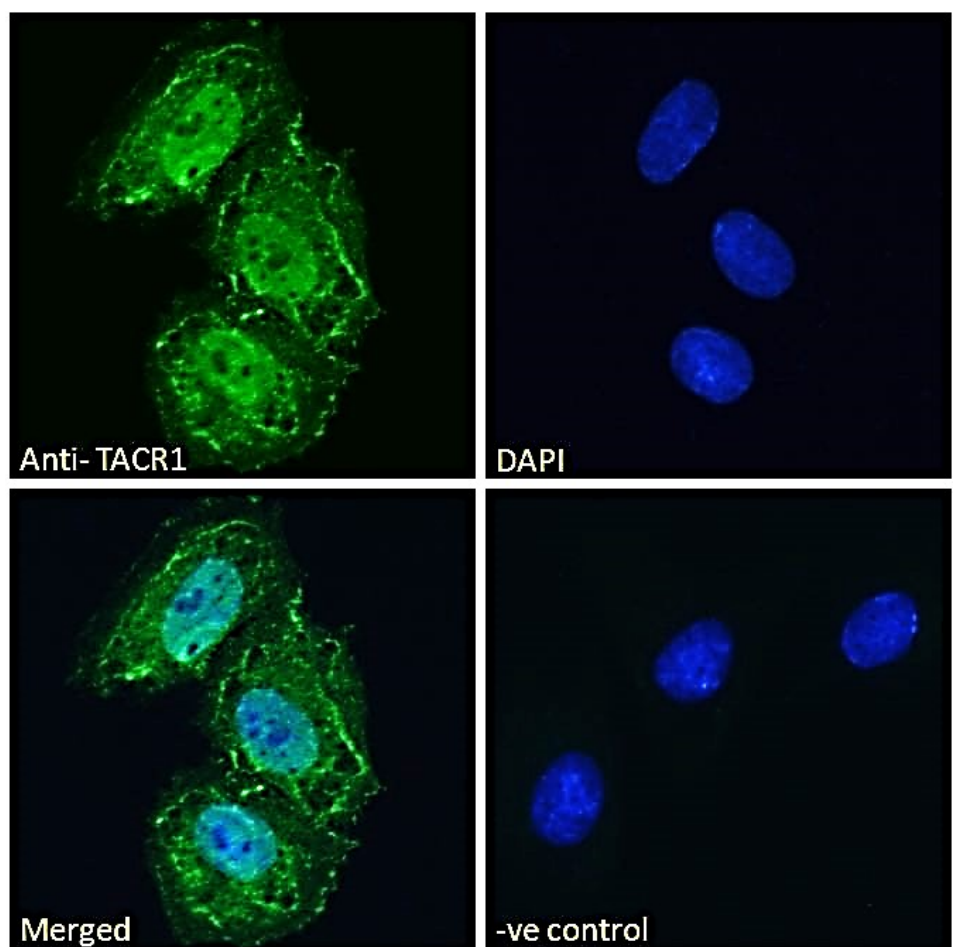
Species Reactivity

Tested: Human, Mouse

Expected from sequence similarity: Human, Mouse, Dog



EB07771 (1 μ g/ml) staining of HeLa (A) and (0.5 μ g/ml) Neuro2a (B) cell lysate (35 μ g protein in RIPA buffer).
Detected by chemiluminescence.



EB07771 Immunofluorescence analysis of paraformaldehyde fixed Neuro2a cells, permeabilized with 0.15% Triton. Primary incubation 1hr (10 μ g/ml) followed by Alexa Fluor 488 secondary antibody (2 μ g/ml), showing nuclear and plasma membrane staining. The nuclear stain is DAPI (blue). Negative control: Unimmunized goat

IgG (10ug/ml) followed by Alexa Fluor 488 secondary antibody (2ug/ml).