



UK Office

Everest Biotech Ltd

Cherwell Innovation Centre
77 Heyford Park
Upper Heyford
Oxfordshire
OX25 5HD
UK

Enquiries:

info@everestbiotech.com

Sales:

sales@everestbiotech.com

Tech support:

support@everestbiotech.com

Tel: +44 (0)1869 238326

Fax: +44 (0)1869 238327

US Office

Everest Biotech c/o Abcore

405 Maple Street, Suite A106
Ramona,
CA 92065
USA

Inquiries:

info@everestbiotech.com

Sales:

usasales@everestbiotech.com

Tech support:

support@everestbiotech.com

Tel: 888-320-4628 (toll-free)

Fax: 888-841-9041

www.everestbiotech.com

**Research Use Only. Not for
diagnostic or therapeutic use.**

EB09721 - Goat Anti-TAF8 / TAFII43 Antibody

Size: 100µg specific antibody in 200µl



Target Protein

Principal Names: TAF8, TAF8 RNA polymerase II, TATA box binding protein (TBP)-associated factor, 43kDa, 43, FLJ32821, II, TAF, TAFII43, TBN, OTTHUMP00000016392, TAF(II)43, TAF8 RNA polymerase II, TATA box binding protein (TBP)-associated factor, 50 kD, TATA box binding protein (TBP)-associated factor, RNA polymerase II, A, 45/50kDa, TBP-associated factor 8, TBP-associated factor TAFII43, TBP-associated factor, RNA polymerase II, 43 kD, taube nuss homolog

Official Symbol: TAF8

Accession Number(s): NP_612639.2

Human GeneID(s): [129685](#)

Non-Human GeneID(s): 63856 (mouse), 316216 (rat)

Immunogen

Peptide with sequence KSYCEHTARTQPT, from the internal region of the protein sequence according to NP_612639.2.

Please note the [peptide](#) is available for sale.

Purification and Storage

Purified from goat serum by ammonium sulphate precipitation followed by antigen affinity chromatography using the immunizing peptide.

Supplied at 0.5 mg/ml in Tris saline, 0.02% sodium azide, pH7.3 with 0.5% bovine serum albumin.

Aliquot and store at -20°C. Minimize freezing and thawing.

Applications Tested

Peptide ELISA: antibody detection limit dilution 1:16000.

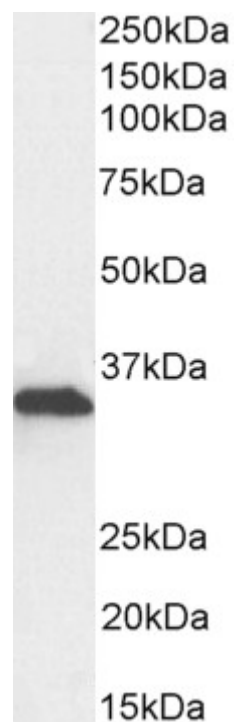
Western blot: Approx. 37kDa band observed in Human Hippocampus lysates, approx. 38kDa in Mouse and Rat Brain lysates and approx. 35kDa in lysates of cell line NIH3T3 (calculated MW of 34.3kDa according to Human NP_612639.2, 34.0kDa according to Mouse NP_071298.1 and 34.1kDa according to Rat NP_001101667.1). Recommended concentration: 0.5-µg/ml. Primary incubation 1 hour at room temperature.

Flow Cytometry: Flow cytometric analysis of NIH3T3 cells. Recommended concentration: 10ug/ml.

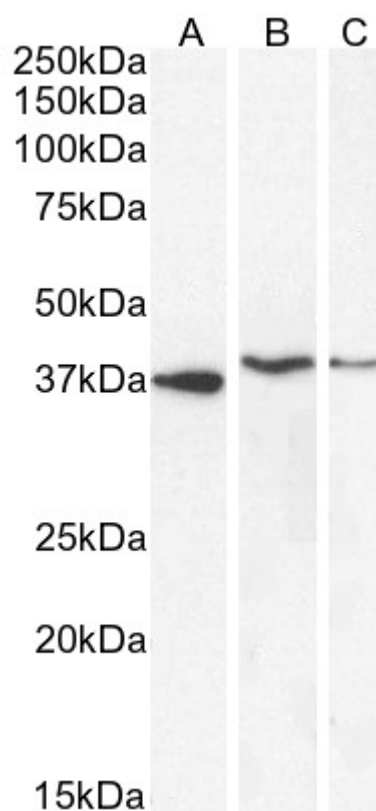
Species Reactivity

Tested: Human, Mouse, Rat

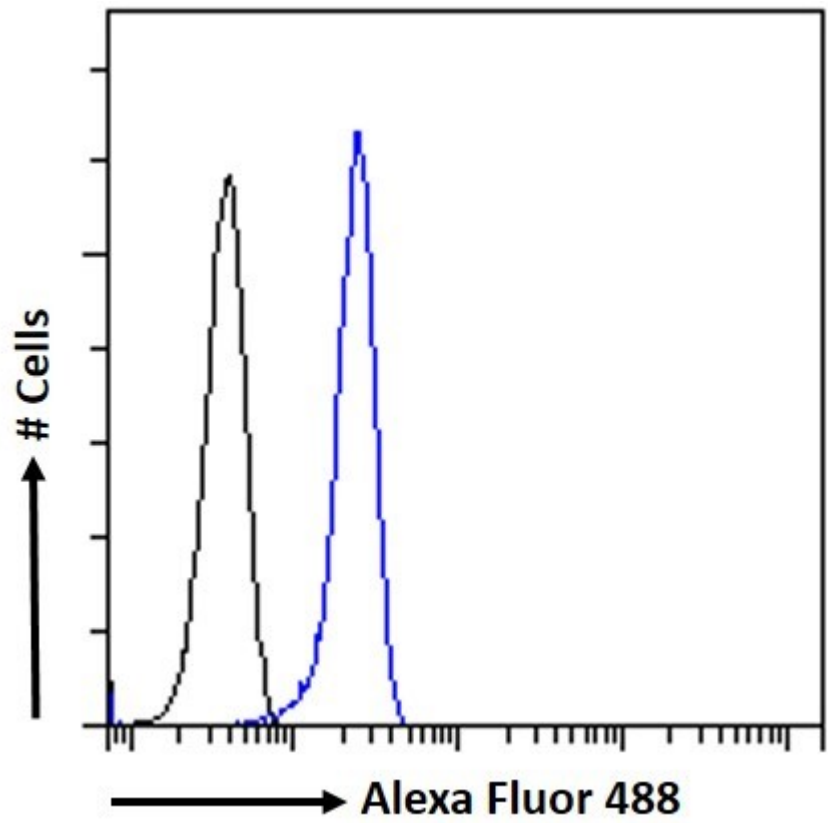
Expected from sequence similarity: Human, Mouse, Rat, Dog, Cow



EB09721 (0.5µg/ml) staining of NIH3T3 cell lysate (35µg protein in RIPA buffer). Detected by chemiluminescence.



EB09721 (1µg/ml) staining of Human Hippocampus (A), Rat Brain (B) and (2ug/ml) Mouse Brain (C) lysate (35µg protein in RIPA buffer). Detected by chemiluminescence.



EB09721 Flow cytometric analysis of paraformaldehyde fixed NIH3T3 cells (blue line), permeabilized with 0.5% Triton. Primary incubation 1hr (10ug/ml) followed by Alexa Fluor 488 secondary antibody (1ug/ml). IgG control: Unimmunized goat IgG (black line) followed by Alexa Fluor 488 secondary antibody.