



UK Office

Everest Biotech Ltd

Cherwell Innovation Centre
77 Heyford Park
Upper Heyford
Oxfordshire
OX25 5HD
UK

Enquiries:

info@everestbiotech.com

Sales:

sales@everestbiotech.com

Tech support:

support@everestbiotech.com

Tel: +44 (0)1869 238326

Fax: +44 (0)1869 238327

US Office

Everest Biotech c/o Abcore

405 Maple Street, Suite A106
Ramona,
CA 92065
USA

Inquiries:

info@everestbiotech.com

Sales:

usasales@everestbiotech.com

Tech support:

support@everestbiotech.com

Tel: 888-320-4628 (toll-free)

Fax: 888-841-9041

www.everestbiotech.com

**Research Use Only. Not for
diagnostic or therapeutic use.**

EB09569 - Goat Anti-Talin 1 / TLN1 Antibody

Size: 100µg specific antibody in 200µl



Target Protein

Principal Names: TLN1, talin 1, ILWEQ, KIAA1027, TLN

Official Symbol: TLN1

Accession Number(s): NP_006280.3

Human GeneID(s): [7094](#)

Non-Human GeneID(s): 21894 (mouse), 313494 (rat)

Important Comments: This antibody is not expected to cross-react with the highly similar protein Talin 2.

Immunogen

Peptide with sequence C-QEALHTQMLTAVQE, from the internal region of the protein sequence according to NP_006280.3.

Please note the [peptide](#) is available for sale.

Purification and Storage

Purified from goat serum by ammonium sulphate precipitation followed by antigen affinity chromatography using the immunizing peptide.

Supplied at 0.5 mg/ml in Tris saline, 0.02% sodium azide, pH7.3 with 0.5% bovine serum albumin.

Aliquot and store at -20°C. Minimize freezing and thawing.

Applications Tested

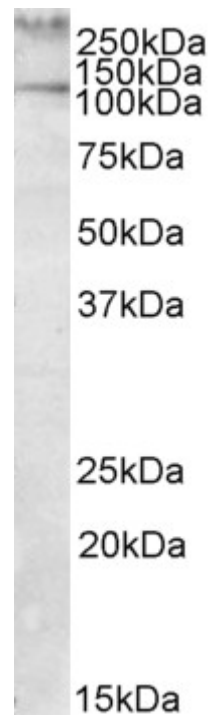
Peptide ELISA: antibody detection limit dilution 1:8000.

Western blot: A >250kDa band observed in Human Peripheral Mononucleocyte lysates (calculated MW of 270kDa according to NP_006280.3). Recommended concentration: 1-3µg/ml. An additional band of unknown identity was also consistently observed at 110kDa. This band was successfully blocked by incubation with the immunizing peptide.

Species Reactivity

Tested: Human

Expected from sequence similarity: Human, Mouse, Rat, Dog, Cow



EB09569 (1µg/ml) staining of Human Peripheral Mononucleocytes lysate (35µg protein in RIPA buffer). Primary incubation was 1 hour. Detected by chemiluminescence.