



## UK Office

### Everest Biotech Ltd

Cherwell Innovation Centre  
77 Heyford Park  
Upper Heyford  
Oxfordshire  
OX25 5HD  
UK

Enquiries:

[info@everestbiotech.com](mailto:info@everestbiotech.com)

Sales:

[sales@everestbiotech.com](mailto:sales@everestbiotech.com)

Tech support:

[support@everestbiotech.com](mailto:support@everestbiotech.com)

Tel: +44 (0)1869 238326

[www.everestbiotech.com](http://www.everestbiotech.com)

**Research Use Only. Not for  
diagnostic or therapeutic use.**

## EB10765 - Goat Anti-TAp63alpha / deltaNp63alpha Antibody

Size: 100µg specific antibody in 200µl



### Target Protein

**Principal Names:** TP63, tumor protein p63, AIS, B(p51A), B(p51B), EEC3, KET, LMS, NBP, RHS, SHFM4, TP53CP, TP53L, TP73L, p40, p51, p53CP, p63, p73H, p73L, CUSP

**Official Symbol:** TP63

**Accession Number(s):** NP\_003713.3; NP\_001108452.1

**Human GeneID(s):** [8626](#)

**Non-Human GeneID(s):** 22061 (mouse), 246334 (rat)

**Important Comments:** This antibody is expected to recognize isoform 1 (NP\_003713.3) and isoform 4 (NP\_001108452.1) of TP63 .

### Immunogen

Peptide with sequence C-RNKQQRKEEGE, from the C Terminus of the protein sequence according to NP\_003713.3; NP\_001108452.1.

Please note the [peptide](#) is available for sale.

### Purification and Storage

Purified from goat serum by ammonium sulphate precipitation followed by antigen affinity chromatography using the immunizing peptide.

Supplied at 0.5 mg/ml in Tris saline, 0.02% sodium azide, pH7.3 with 0.5% bovine serum albumin.

Aliquot and store at -20°C. Minimize freezing and thawing.

### Applications Tested

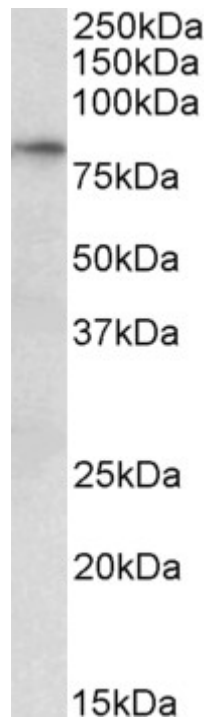
**Peptide ELISA:** antibody detection limit dilution 1:32000.

**Western blot:** Approx 75-80kDa band observed in Human, Mouse and Rat Heart lysates (calculated MW of 76.8kDa according to NP\_003713.3). Recommended concentration: 0.3-1µg/ml.

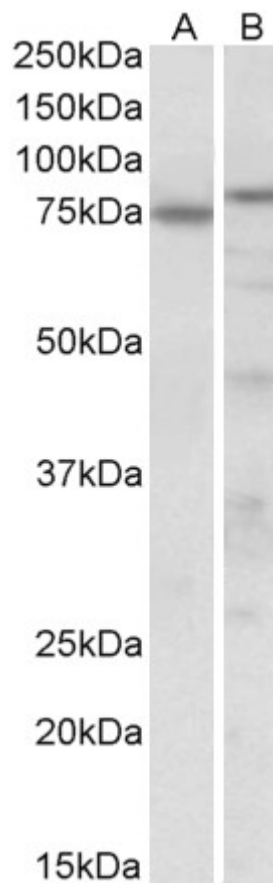
### Species Reactivity

**Tested:** Human, Mouse, Rat

**Expected from sequence similarity:** Human, Mouse, Rat, Dog, Pig, Cow



EB10765 (0.3 $\mu$ g/ml) staining of Human Heart lysate (35 $\mu$ g protein in RIPA buffer). Primary incubation was 1 hour. Detected by chemiluminescence.



EB10765 (0.3 $\mu$ g/ml) staining of Mouse (A) and Rat (B) Heart lysate (35 $\mu$ g protein in RIPA buffer). Primary incubation was 1 hour. Detected by chemiluminescence.