



UK Office

Everest Biotech Ltd

Cherwell Innovation Centre
77 Heyford Park
Upper Heyford
Oxfordshire
OX25 5HD
UK

Enquiries:

info@everestbiotech.com

Sales:

sales@everestbiotech.com

Tech support:

support@everestbiotech.com

Tel: +44 (0)1869 238326

Fax: +44 (0)1869 238327

US Office

Everest Biotech c/o Abcore

405 Maple Street, Suite A106
Ramona,
CA 92065
USA

Inquiries:

info@everestbiotech.com

Sales:

usasales@everestbiotech.com

Tech support:

support@everestbiotech.com

Tel: 888-320-4628 (toll-free)

Fax: 888-841-9041

www.everestbiotech.com

**Research Use Only. Not for
diagnostic or therapeutic use.**

EB10765 - Goat Anti-TAp63alpha / deltaNp63alpha Antibody

Size: 100µg specific antibody in 200µl



Target Protein

Principal Names: TP63, tumor protein p63, AIS, B(p51A), B(p51B), EEC3, KET, LMS, NBP, RHS, SHFM4, TP53CP, TP53L, TP73L, p40, p51, p53CP, p63, p73H, p73L, CUSP

Official Symbol: TP63

Accession Number(s): NP_003713.3; NP_001108452.1

Human GeneID(s): [8626](#)

Non-Human GeneID(s): 22061 (mouse), 246334 (rat)

Important Comments: This antibody is expected to recognize isoform 1 (NP_003713.3) and isoform 4 (NP_001108452.1) of TP63 .

Immunogen

Peptide with sequence C-RNKQQRIKEEGE, from the C Terminus of the protein sequence according to NP_003713.3; NP_001108452.1.

Please note the [peptide](#) is available for sale.

Purification and Storage

Purified from goat serum by ammonium sulphate precipitation followed by antigen affinity chromatography using the immunizing peptide.

Supplied at 0.5 mg/ml in Tris saline, 0.02% sodium azide, pH7.3 with 0.5% bovine serum albumin.

Aliquot and store at -20°C. Minimize freezing and thawing.

Applications Tested

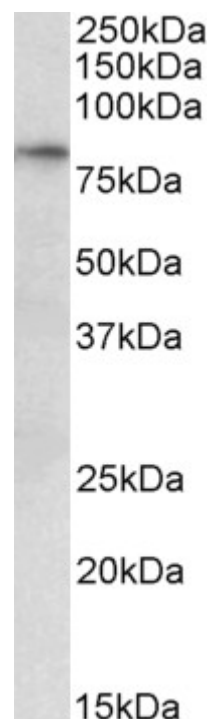
Peptide ELISA: antibody detection limit dilution 1:32000.

Western blot: Approx 75-80kDa band observed in Human, Mouse and Rat Heart lysates (calculated MW of 76.8kDa according to NP_003713.3). Recommended concentration: 0.3-1µg/ml.

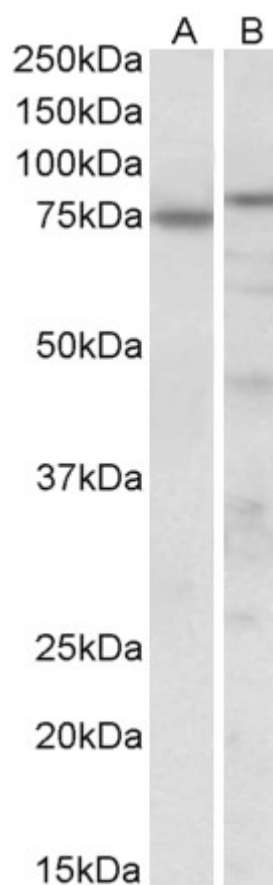
Species Reactivity

Tested: Human, Mouse, Rat

Expected from sequence similarity: Human, Mouse, Rat, Dog, Pig, Cow



EB10765 (0.3µg/ml) staining of Human Heart lysate (35µg protein in RIPA buffer). Primary incubation was 1 hour. Detected by chemiluminescence.



EB10765 (0.3µg/ml) staining of Mouse (A) and Rat (B) Heart lysate (35µg protein in RIPA buffer). Primary incubation was 1 hour. Detected by chemiluminescence.