



## UK Office

### Everest Biotech Ltd

Cherwell Innovation Centre  
77 Heyford Park  
Upper Heyford  
Oxfordshire  
OX25 5HD  
UK

Enquiries:

[info@everestbiotech.com](mailto:info@everestbiotech.com)

Sales:

[sales@everestbiotech.com](mailto:sales@everestbiotech.com)

Tech support:

[support@everestbiotech.com](mailto:support@everestbiotech.com)

Tel: +44 (0)1869 238326

Fax: +44 (0)1869 238327

## US Office

### Everest Biotech c/o Abcore

405 Maple Street, Suite A106  
Ramona,  
CA 92065  
USA

Inquiries:

[info@everestbiotech.com](mailto:info@everestbiotech.com)

Sales:

[usasales@everestbiotech.com](mailto:usasales@everestbiotech.com)

Tech support:

[support@everestbiotech.com](mailto:support@everestbiotech.com)

Tel: 888-320-4628 (toll-free)

Fax: 888-841-9041

[www.everestbiotech.com](http://www.everestbiotech.com)

**Research Use Only. Not for  
diagnostic or therapeutic use.**

## EB09108 - Goat Anti-TDP-43 Antibody

Size: 100µg specific antibody in 200µl



### Target Protein

**Principal Names:** TARDBP, TAR DNA binding protein, ALS10, TDP-43, OTTHUMP00000002171, TAR DNA-binding protein-43

**Official Symbol:** TARDBP

**Accession Number(s):** NP\_031401.1

**Human GeneID(s):** [23435](#)

**Non-Human GeneID(s):** 230908 (mouse)

### Immunogen

Peptide with sequence C-HISNAEPKHNSNRQ, from the internal region of the protein sequence according to NP\_031401.1.

Please note the [peptide](#) is available for sale.

### Purification and Storage

Purified from goat serum by ammonium sulphate precipitation followed by antigen affinity chromatography using the immunizing peptide.

Supplied at 0.5 mg/ml in Tris saline, 0.02% sodium azide, pH7.3 with 0.5% bovine serum albumin.

Aliquot and store at -20°C. Minimize freezing and thawing.

### Applications Tested

**Peptide ELISA:** antibody detection limit dilution 1:16000.

**Western blot:** Approx. 45kDa band observed in lysates of cell line Jurkat and in Human Cerebellum and approx. 48kDa in Human Frontal Cortex and Hippocampus lysates (calculated MW of 44.7kDa according to NP\_031401.1). Recommended concentration: 0.3-1µg/ml. Primary incubation 1 hour at room temperature.

**IHC:** Paraffin embedded Human Prostate. Recommended concentration: 5µg/ml.

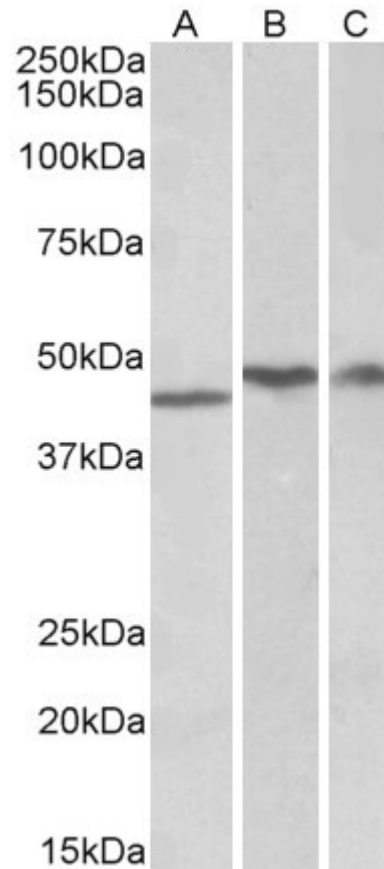
### Species Reactivity

**Tested:** Human

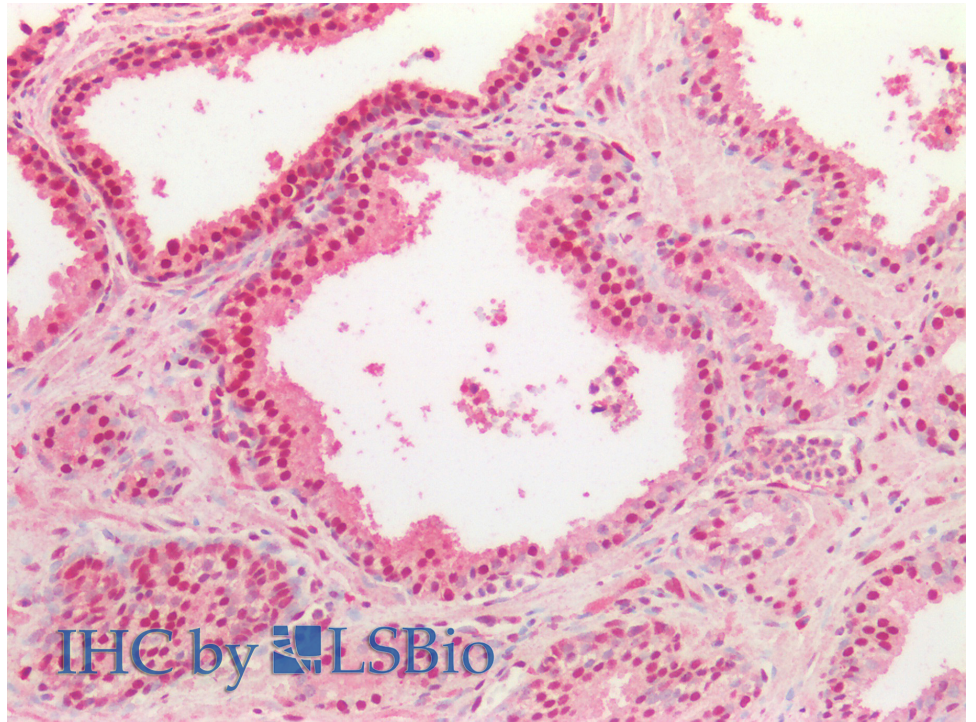
**Expected from sequence similarity:** Human, Mouse, Rat, Dog, Pig, Cow



EB09108 (0.3 $\mu$ g/ml) staining of Jurkat lysate (35 $\mu$ g protein in RIPA buffer). Detected by chemiluminescence.



EB09108 (1 $\mu$ g/ml) staining of Human Cerebellum (A), Frontal Cotex (B) and Hippocampus (C) lysates (35 $\mu$ g protein in RIPA buffer). Detected by chemiluminescence.



EB09108 (5µg/ml) staining of paraffin embedded Human Prostate. Steamed antigen retrieval with citrate buffer pH 6, AP-staining.