



UK Office

Everest Biotech Ltd

Cherwell Innovation Centre
77 Heyford Park
Upper Heyford
Oxfordshire
OX25 5HD
UK

Enquiries:

info@everestbiotech.com

Sales:

sales@everestbiotech.com

Tech support:

support@everestbiotech.com

Tel: +44 (0)1869 238326

Fax: +44 (0)1869 238327

US Office

Everest Biotech c/o Abcore

405 Maple Street, Suite A106
Ramona,
CA 92065
USA

Inquiries:

info@everestbiotech.com

Sales:

usasales@everestbiotech.com

Tech support:

support@everestbiotech.com

Tel: 888-320-4628 (toll-free)

Fax: 888-841-9041

www.everestbiotech.com

**Research Use Only. Not for
diagnostic or therapeutic use.**

EB12303 - Goat Anti-TBC1D9 Antibody

Size: 100µg specific antibody in 200µl



Target Protein

Principal Names: TBC1D9, TBC1 domain family, member 9 (with GRAM domain), MDR1, TBC1 domain family member 9, TBC1 domain family member 9A

Official Symbol: TBC1D9

Accession Number(s): NP_055945.2

Human GeneID(s): [23158](#)

Non-Human GeneID(s): 71310 (mouse), 304645 (rat)

Immunogen

Peptide with sequence EDKLHCEDIGEDT, from the internal region (near C terminus) of the protein sequence according to NP_055945.2.

Please note the [peptide](#) is available for sale.

Purification and Storage

Purified from goat serum by ammonium sulphate precipitation followed by antigen affinity chromatography using the immunizing peptide.

Supplied at 0.5 mg/ml in Tris saline, 0.02% sodium azide, pH7.3 with 0.5% bovine serum albumin.

Aliquot and store at -20°C. Minimize freezing and thawing.

Applications Tested

Peptide ELISA: antibody detection limit dilution 1:128000.

Western blot: Experiments gave bands at approx 90kDa and 55kDa in lysates of cell line HeLa and in Pig Brain lysates. The sum of the observed sizes equals 145kDa. This protein has a calculated MW of 143kDa according to Human NP_055945.2 and Pig XP_005666914.2). Recommended concentration: 0.3-1µg/ml.

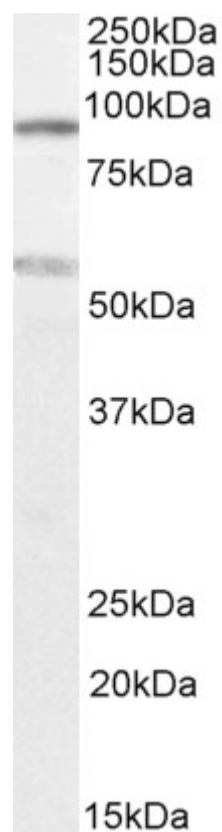
Species Reactivity

Tested: Human, Pig

Expected from sequence similarity: Human, Mouse, Rat, Dog, Pig, Cow



EB12303 (0.3µg/ml) staining of HeLa lysate (35µg protein in RIPA buffer). Primary incubation was 1 hour.
Detected by chemiluminescence.



EB12303 (1µg/ml) staining of Pig Brain lysate (35µg protein in RIPA buffer). Primary incubation was 1 hour.
Detected by chemiluminescence.