

## UK Office

### Everest Biotech Ltd

Cherwell Innovation Centre  
77 Heyford Park  
Upper Heyford  
Oxfordshire  
OX25 5HD  
UK

Enquiries:

[info@everestbiotech.com](mailto:info@everestbiotech.com)

Sales:

[sales@everestbiotech.com](mailto:sales@everestbiotech.com)

Tech support:

[support@everestbiotech.com](mailto:support@everestbiotech.com)

Tel: +44 (0)1869 238326

Fax: +44 (0)1869 238327

## US Office

### Everest Biotech c/o Abcore

405 Maple Street, Suite A106  
Ramona,  
CA 92065  
USA

Inquiries:

[info@everestbiotech.com](mailto:info@everestbiotech.com)

Sales:

[usasales@everestbiotech.com](mailto:usasales@everestbiotech.com)

Tech support:

[support@everestbiotech.com](mailto:support@everestbiotech.com)

Tel: 888-320-4628 (toll-free)

Fax: 888-841-9041

[www.everestbiotech.com](http://www.everestbiotech.com)

**Research Use Only. Not for  
diagnostic or therapeutic use.**

## EB05313 - Goat Anti-TBL1X / TBL1XR1 Antibody

Size: 100µg specific antibody in 200µl



## Target Protein

**Principal Names:** TBL1X, TBL1XR1, EBI, TBL1, transducin (beta)-like 1X-linked, transducin (beta)-like 1, transducin (beta)-like 1 X-linked, transducin (beta)-like 1X-linked receptor 1, C21, DC42, FLJ12894, IRA1, TBLR1, TBL1-related protein 1, nuclear receptor co-repressor/HDAC3 complex subunit, SMAP55, F-box-like/WD repeat-containing protein TBL1X, OTTHUMP00000022879, transducin beta-like 1X

**Official Symbol:** TBL1X

**Accession Number(s):** NP\_005638.1; NP\_001132938.1; NP\_001132939.1; NP\_001132940.1; NP\_078941.2

**Human GeneID(s):** [6907](#) , [79718](#)

**Important Comments:** This antibody is also expected to recognise the human protein TBLR1 (NP\_078941), which is very similar. Variants (NP\_005638.1; NP\_001132938.1) encode isoform a (TBL1X) and variants (NP\_001132939.1; NP\_001132940.1 ) encode isoform b (TBLX1).

## Immunogen

Peptide with sequence SASDGSVCVLDLRK, from the C Terminus of the protein sequence according to NP\_005638.1; NP\_001132938.1; NP\_001132939.1; NP\_001132940.1; NP\_078941.2.

Please note the [peptide](#) is available for sale.

## Purification and Storage

Purified from goat serum by ammonium sulphate precipitation followed by antigen affinity chromatography using the immunizing peptide.

Supplied at 0.5 mg/ml in Tris saline, 0.02% sodium azide, pH7.3 with 0.5% bovine serum albumin.

Aliquot and store at -20°C. Minimize freezing and thawing.

## Applications Tested

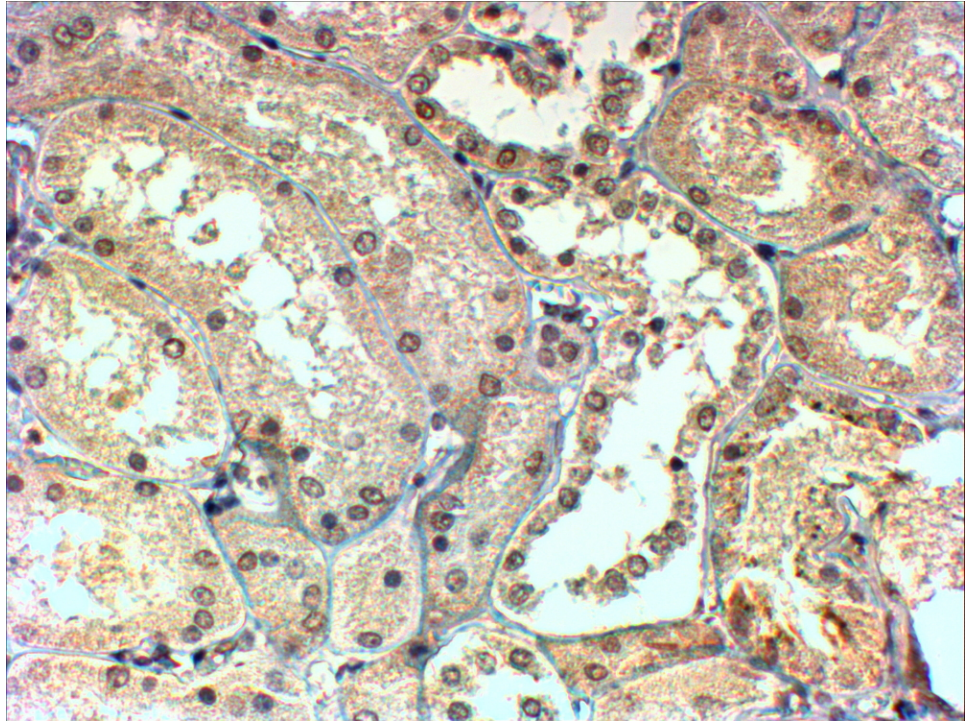
**Peptide ELISA:** antibody detection limit dilution 1:4000.

**IHC:** In paraffin embedded Human Kidney shows preferential nuclear staining in the DCT. Recommended concentration, 4-6µg/ml.

## Species Reactivity

**Tested:** Human

**Expected from sequence similarity:** Human, Mouse, Rat, Dog, Cow



EB05313 (4 $\mu$ g/ml) staining of paraffin embedded Human Kidney. Steamed antigen retrieval with Tris/EDTA buffer pH 9, HRP-staining.