



## UK Office

### Everest Biotech Ltd

Cherwell Innovation Centre  
77 Heyford Park  
Upper Heyford  
Oxfordshire  
OX25 5HD  
UK

Enquiries:

[info@everestbiotech.com](mailto:info@everestbiotech.com)

Sales:

[sales@everestbiotech.com](mailto:sales@everestbiotech.com)

Tech support:

[support@everestbiotech.com](mailto:support@everestbiotech.com)

Tel: +44 (0)1869 238326

[www.everestbiotech.com](http://www.everestbiotech.com)

**Research Use Only. Not for  
diagnostic or therapeutic use.**

## EB11401 - Goat Anti-TBP /Transcription factor IID (isoform1) Antibody

Size: 100µg specific antibody in 200µl



### Target Protein

**Principal Names:** GTF2D, GTF2D1, HDL4, MGC117320, MGC126054, MGC126055, SCA17, TATA box binding protein, TATA sequence-binding protein, TATA-box binding protein N-terminal domain, TATA-box factor, TATA-box-binding protein, TFIID, transcription initiation factor TFIID TBP subunit, TBP

**Official Symbol:** TBP

**Accession Number(s):** NP\_003185.1

**Human GeneID(s):** [6908](#)

**Non-Human GeneID(s):** 21374 (mouse), 117526 (rat)

**Important Comments:** This antibody is expected to recognize reported isoform 1(NP\_003185.1) only.

### Immunogen

Peptide with sequence DQNNLPPYAQ-C, from the N Terminus of the protein sequence according to NP\_003185.1.

Please note the [peptide](#) is available for sale.

### Purification and Storage

Purified from goat serum by ammonium sulphate precipitation followed by antigen affinity chromatography using the immunizing peptide.

Supplied at 0.5 mg/ml in Tris saline, 0.02% sodium azide, pH7.3 with 0.5% bovine serum albumin.

Aliquot and store at -20°C. Minimize freezing and thawing.

### Applications Tested

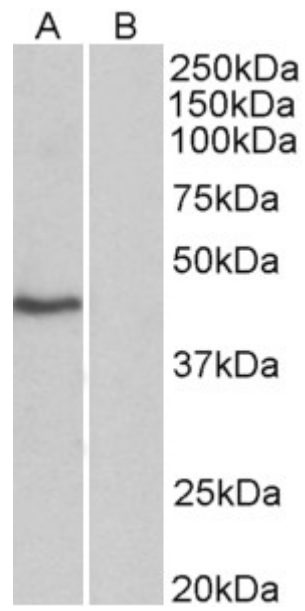
**Peptide ELISA:** antibody detection limit dilution 1:64000.

**Western blot:** Approx 40kDa band observed in nuclear, but not in cytosolic lysates of cell line HeLa (calculated MW of 37.7kDa according to NP\_003185.1). Recommended concentration: 0.3-1µg/ml.

### Species Reactivity

**Tested:** Human

**Expected from sequence similarity:** Human, Mouse, Rat, Dog, Pig, Cow



EB11401 (0.3 $\mu$ g/ml) staining of HeLa nuclear (A) and cytosolic (B) lysates (35 $\mu$ g protein in commercial extraction buffer). Primary incubation was 1 hour. Detected by chemiluminescence.