



UK Office

Everest Biotech Ltd

Cherwell Innovation Centre
77 Heyford Park
Upper Heyford
Oxfordshire
OX25 5HD
UK

Enquiries:

info@everestbiotech.com

Sales:

sales@everestbiotech.com

Tech support:

support@everestbiotech.com

Tel: +44 (0)1869 238326

Fax: +44 (0)1869 238327

US Office

Everest Biotech c/o Abcore

405 Maple Street, Suite A106
Ramona,
CA 92065
USA

Inquiries:

info@everestbiotech.com

Sales:

usasales@everestbiotech.com

Tech support:

support@everestbiotech.com

Tel: 888-320-4628 (toll-free)

Fax: 888-841-9041

www.everestbiotech.com

**Research Use Only. Not for
diagnostic or therapeutic use.**

EB06068 - Goat Anti-TCF19 / SC1 Antibody

Size: 100µg specific antibody in 200µl



Target Protein

Principal Names: TCF19, SC1, transcription factor 19 (SC1), transcription factor 19, DAMA-213L4.5, SC1-1, SC1(TCF19)-6, SC1(TCF19)-7, SCI(TCF19)-4

Official Symbol: TCF19

Accession Number(s): NP_009040.1

Human GeneID(s): [6941](#)

Important Comments: Immunizing peptide was designed based on NP_009040.1, but this version has become NP_009040.2 and shorter, thus no longer matching with the peptide.

Immunogen

Peptide with sequence C-RSTAKAPSDTPAHE, from the C Terminus of the protein sequence according to NP_009040.1.

Please note the [peptide](#) is available for sale.

Purification and Storage

Purified from goat serum by ammonium sulphate precipitation followed by antigen affinity chromatography using the immunizing peptide.

Supplied at 0.5 mg/ml in Tris saline, 0.02% sodium azide, pH7.3 with 0.5% bovine serum albumin.

Aliquot and store at -20°C. Minimize freezing and thawing.

Applications Tested

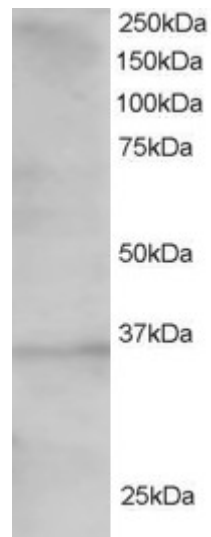
Peptide ELISA: antibody detection limit dilution 1:32000.

Western blot: Approx 35 kDa band observed in 293 lysate (predicted MW of 41kDa according to NP_009040). Recommended for use at 1-2µg/ml.

Species Reactivity

Tested: Human

Expected from sequence similarity: Human



EB06068 staining (1.5µg/ml) of 293 lysate (RIPA buffer, 30µg total protein per lane). Primary incubated for 1 hour. Detected by western blot using chemiluminescence.