



## UK Office

### Everest Biotech Ltd

Cherwell Innovation Centre  
77 Heyford Park  
Upper Heyford  
Oxfordshire  
OX25 5HD  
UK

Enquiries:

[info@everestbiotech.com](mailto:info@everestbiotech.com)

Sales:

[sales@everestbiotech.com](mailto:sales@everestbiotech.com)

Tech support:

[support@everestbiotech.com](mailto:support@everestbiotech.com)

Tel: +44 (0)1869 238326

Fax: +44 (0)1869 238327

## US Office

### Everest Biotech c/o Abcore

405 Maple Street, Suite A106  
Ramona,  
CA 92065  
USA

Inquiries:

[info@everestbiotech.com](mailto:info@everestbiotech.com)

Sales:

[usasales@everestbiotech.com](mailto:usasales@everestbiotech.com)

Tech support:

[support@everestbiotech.com](mailto:support@everestbiotech.com)

Tel: 888-320-4628 (toll-free)

Fax: 888-841-9041

[www.everestbiotech.com](http://www.everestbiotech.com)

**Research Use Only. Not for  
diagnostic or therapeutic use.**

## EB07587 - Goat Anti-TCF3 / ITF1 Antibody

Size: 100µg specific antibody in 200µl



### Target Protein

**Principal Names:** TCF3, ITF1, transcription factor 3 (E2A immunoglobulin enhancer binding factors E12/E47), E2A, MGC129647, MGC129648, E2A immunoglobulin enhancer-binding factor E12/E47, immunoglobulin transcription factor 1, kappa-E2-binding factor, transcription factor 3, transcription factor E2-alpha, bHLHb21, class B basic helix-loop-helix protein 21, E2A, E47, helix-loop-helix protein HE47, negative vitamin D response element-binding protein, NOL1-TCF3 fusion, transcription factor 3 variant 3, transcription factor ITF-1, VDIR, VDR interacting repressor, vitamin D receptor-interacting repressor

**Official Symbol:** TCF3

**Accession Number(s):** NP\_003191.1

**Human GeneID(s):** [6929](#)

**Important Comments:** This antibody is expected to recognize reported isoform E12 (NP\_003191.1) only.

### Immunogen

Peptide with sequence C-KAPRARTSPDEDED, from the internal region of the protein sequence according to NP\_003191.1.

Please note the [peptide](#) is available for sale.

### Purification and Storage

Purified from goat serum by ammonium sulphate precipitation followed by antigen affinity chromatography using the immunizing peptide.

Supplied at 0.5 mg/ml in Tris saline, 0.02% sodium azide, pH7.3 with 0.5% bovine serum albumin.

Aliquot and store at -20°C. Minimize freezing and thawing.

### Applications Tested

**Peptide ELISA:** antibody detection limit dilution 1:128000.

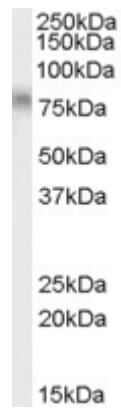
**Western blot:** Approx 75kDa band observed in lysates of cell line Daudi (calculated MW of 67.6kDa according to NP\_003191.1). Recommended concentration: 0.01-0.03µg/ml.

**IHC:** In paraffin embedded Human Kidney shows strong nuclear staining in DCT cells. Recommended concentration, 3-5µg/ml.

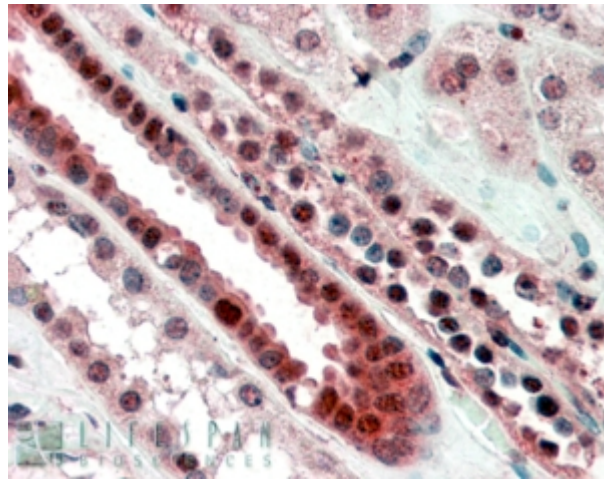
### Species Reactivity

**Tested:** Human

**Expected from sequence similarity:** Human



EB07587 (0.01 $\mu$ g/ml) staining of Daudi cell lysate (35 $\mu$ g protein in RIPA buffer). Primary incubation was 1 hour. Detected by chemiluminescence.



EB07587 (3.8 $\mu$ g/ml) staining of paraffin embedded Human Kidney. Steamed antigen retrieval with citrate buffer pH 6, AP-staining.