



UK Office

Everest Biotech Ltd

Cherwell Innovation Centre
77 Heyford Park
Upper Heyford
Oxfordshire
OX25 5HD
UK

Enquiries:

info@everestbiotech.com

Sales:

sales@everestbiotech.com

Tech support:

support@everestbiotech.com

Tel: +44 (0)1869 238326

Fax: +44 (0)1869 238327

US Office

Everest Biotech c/o Abcore

405 Maple Street, Suite A106
Ramona,
CA 92065
USA

Inquiries:

info@everestbiotech.com

Sales:

usasales@everestbiotech.com

Tech support:

support@everestbiotech.com

Tel: 888-320-4628 (toll-free)

Fax: 888-841-9041

www.everestbiotech.com

**Research Use Only. Not for
diagnostic or therapeutic use.**

EB06277-T - Goat Anti-TCP1 Antibody - Trial

Size: 20µg specific antibody in 40µl



Target Protein

Principal Names: TCP1, t-complex 1, CCT-alpha, CCT1, CCTa, D6S230E, TCP-1-alpha, T-complex protein 1, T-complex protein 1, alpha subunit, tailless complex polypeptide 1

Official Symbol: TCP1

Accession Number(s): NP_110379.2; NP_001008897.1

Human GeneID(s): [6950](#)

Important Comments: This antibody is expected to recognise both reported isoforms.

Immunogen

Peptide with sequence C-SYEDAVHSGALND, from the C Terminus of the protein sequence according to NP_110379.2; NP_001008897.1.

Please note the [peptide](#) is available for sale.

Purification and Storage

Purified from goat serum by ammonium sulphate precipitation followed by antigen affinity chromatography using the immunizing peptide.

Supplied at 0.5 mg/ml in Tris saline, 0.02% sodium azide, pH7.3 with 0.5% bovine serum albumin.

Aliquot and store at -20°C. Minimize freezing and thawing.

Applications Tested

Peptide ELISA: antibody detection limit dilution 1:32000.

Western blot: Approx 60kDa band observed in lysates of cell line HEK293 and in Human Ovary lysates (calculated MW of 60.3kDa according to NP_110379.2). Recommended concentration: 0.3-1µg/ml. Primary incubation 1 hour at room temperature.

IHC: In paraffin embedded Human Testis shows only cytoplasmic staining in some germ cells, and both cytoplasmic and nuclear staining in other germ cells with unstained nucleoli. Recommended concentration: 1-2µg/ml.

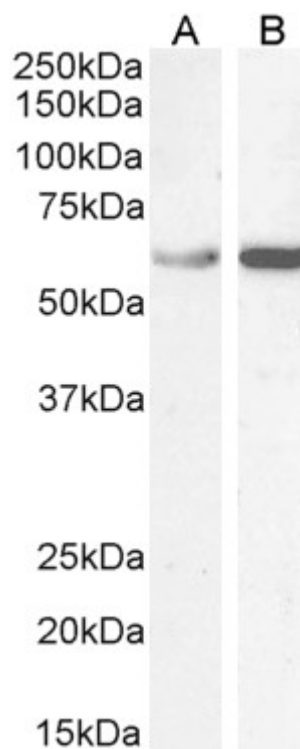
Immunofluorescence: Strong expression of the protein seen in the cytoplasm and nuclei of HeLa cells. Recommended concentration: 10µg/ml.

Flow Cytometry: Flow cytometric analysis of HeLa cells. Recommended concentration: 10ug/ml.

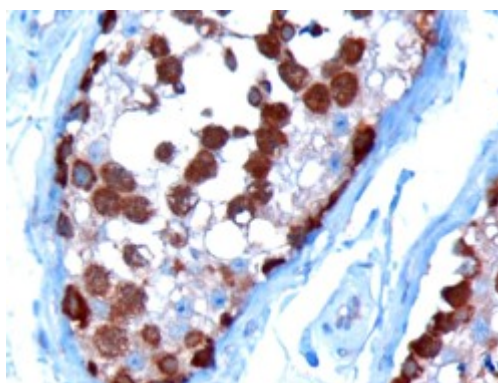
Species Reactivity

Tested: Human

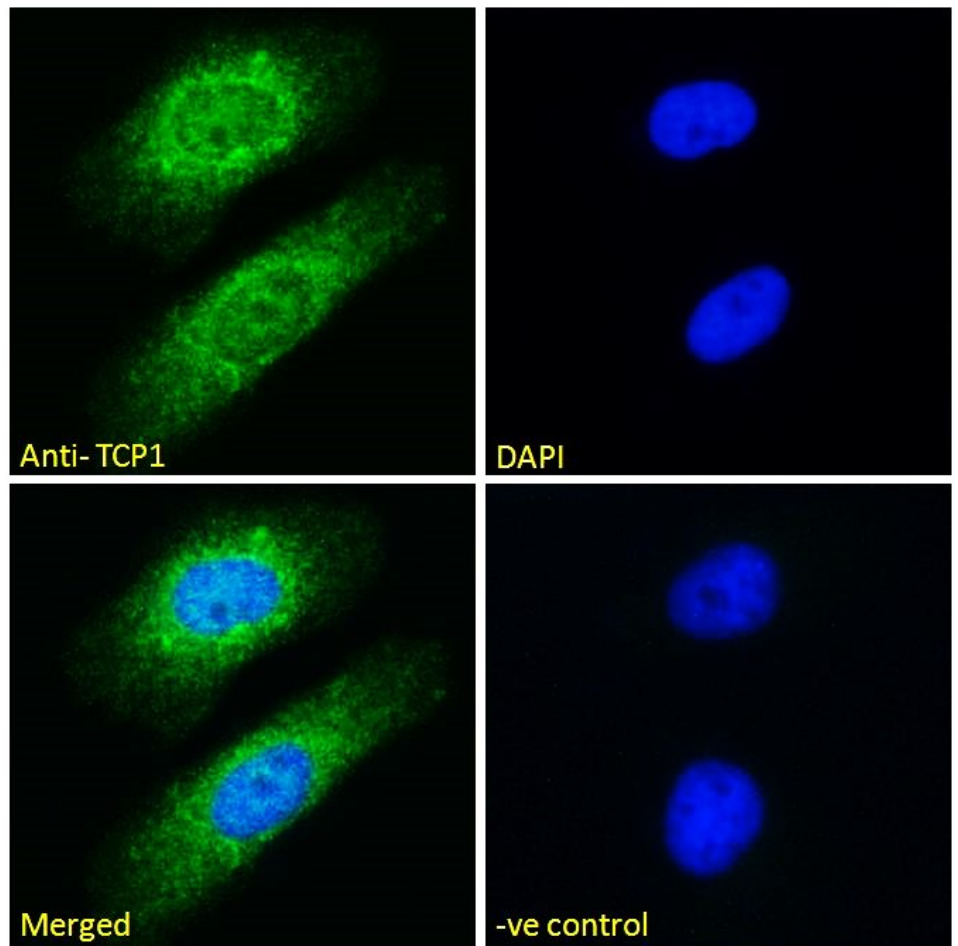
Expected from sequence similarity: Human



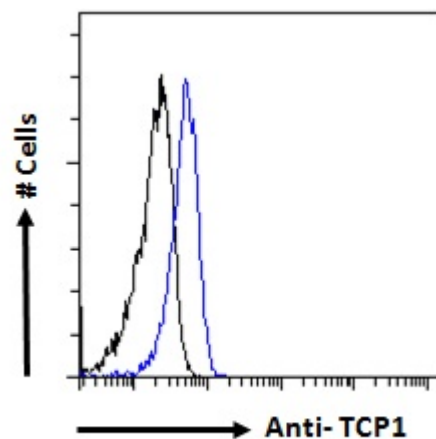
EB06277 (1 μ g/ml) staining of Human Ovary (A) lysate and HEK293 (B) cell lysate (35 μ g protein in RIPA buffer).
Detected by chemiluminescence.



EB06277 (10 μ g/ml) staining of paraffin embedded Human Testis. Microwaved antigen retrieval with Tris/EDTA buffer pH9, HRP-staining.



EB06277 Immunofluorescence analysis of paraformaldehyde fixed HeLa cells, permeabilized with 0.15% Triton. Primary incubation 1hr (10ug/ml) followed by Alexa Fluor 488 secondary antibody (2ug/ml), showing cytoplasmic and nuclear staining. The nuclear stain is DAPI (blue). Negative control: Unimmunized goat IgG (10ug/ml) followed by Alexa Fluor 488 secondary antibody (2ug/ml).



EB06277 Flow cytometric analysis of paraformaldehyde fixed HeLa cells (blue line), permeabilized with 0.5% Triton. Primary incubation 1hr (10ug/ml) followed by Alexa Fluor 488 secondary antibody (1ug/ml). IgG control: Unimmunized goat IgG (black line) followed by Alexa Fluor 488 secondary antibody.