



UK Office

Everest Biotech Ltd

Cherwell Innovation Centre
77 Heyford Park
Upper Heyford
Oxfordshire
OX25 5HD
UK

Enquiries:

info@everestbiotech.com

Sales:

sales@everestbiotech.com

Tech support:

support@everestbiotech.com

Tel: +44 (0)1869 238326

Fax: +44 (0)1869 238327

US Office

Everest Biotech c/o Abcore

405 Maple Street, Suite A106
Ramona,
CA 92065
USA

Inquiries:

info@everestbiotech.com

Sales:

usasales@everestbiotech.com

Tech support:

support@everestbiotech.com

Tel: 888-320-4628 (toll-free)

Fax: 888-841-9041

www.everestbiotech.com

**Research Use Only. Not for
diagnostic or therapeutic use.**

EB06472 - Goat Anti-TEM8 / Anthrax Toxin Receptor 1 Antibody

Size: 100µg specific antibody in 200µl



Target Protein

Principal Names: TEM8, anthrax toxin receptor, ATR, FLJ10601, FLJ21776, tumor endothelial marker 8, tumor endothelial marker 8, isoform 3 precursor, ANTXR1, anthrax toxin receptor 1, FLJ11298, 2310008J16Rik, 2810405N18Rik

Official Symbol: ANTXR1

Accession Number(s): NP_115584.1

Human GeneID(s): [84168](#)

Important Comments: This antibody is expected to recognise variant 1 (NP_115584) only.

Immunogen

Peptide with sequence C-RAPPPSRPPRPSV, from the C Terminus of the protein sequence according to NP_115584.1.

Please note the [peptide](#) is available for sale.

Purification and Storage

Purified from goat serum by ammonium sulphate precipitation followed by antigen affinity chromatography using the immunizing peptide.

Supplied at 0.5 mg/ml in Tris saline, 0.02% sodium azide, pH7.3 with 0.5% bovine serum albumin.

Aliquot and store at -20°C. Minimize freezing and thawing.

Applications Tested

Peptide ELISA: antibody detection limit dilution 1:64000.

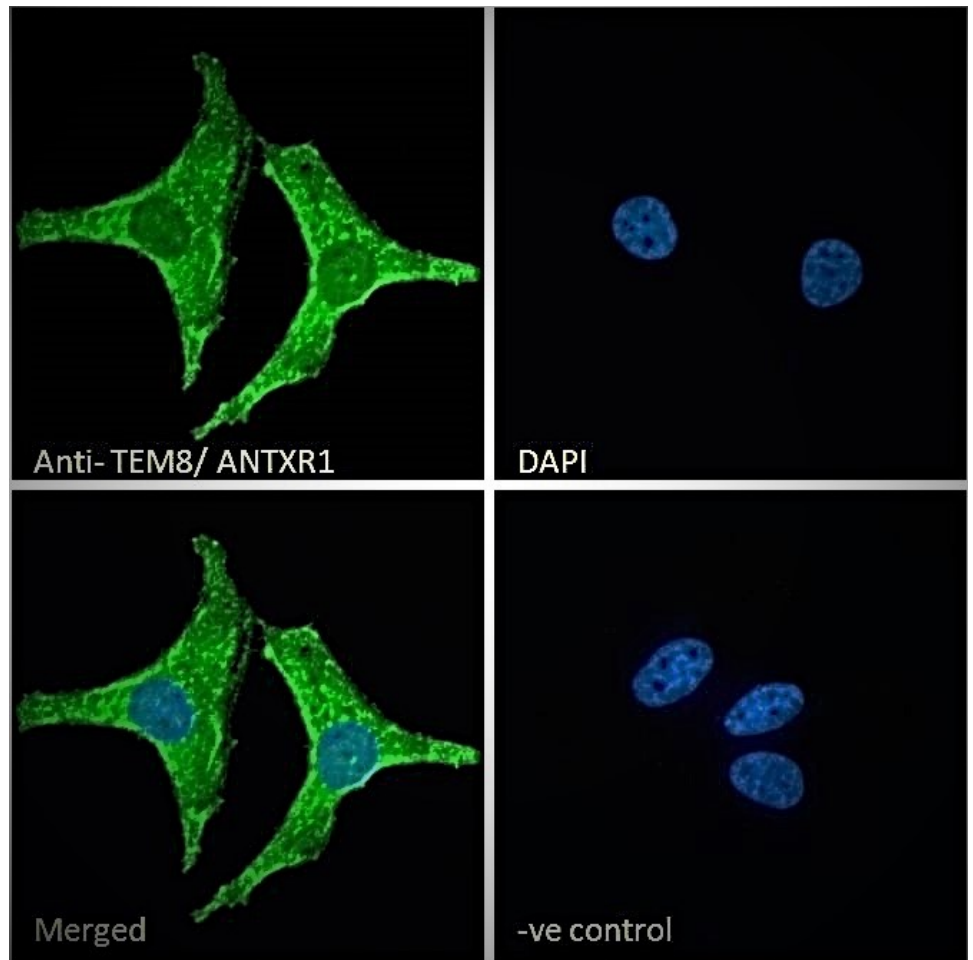
Western blot: Preliminary testing showed a band at approx 65-70kDa in lysate of cell lines A431 and U2OS after 1-2µg/ml antibody staining (calculated MW of 62.8kDa according to NP_115584.1). This band was successfully blocked by incubation with the immunizing peptide. Primary incubation 1 hour at room temperature.

Immunofluorescence: Strong expression of the protein seen in the membrane and cytoplasm of HeLa cells. Recommended concentration: 10µg/ml.

Species Reactivity

Tested: Human

Expected from sequence similarity: Human, Rat, Dog, Cow



EB06472 Immunofluorescence analysis of paraformaldehyde fixed HeLa cells, permeabilized with 0.15% Triton. Primary incubation 1hr (10ug/ml) followed by Alexa Fluor 488 secondary antibody (2ug/ml), showing plasma membrane and cytoplasmic staining. The nuclear stain is DAPI (blue). Negative control: Unimmunized goat IgG (10ug/ml) followed by Alexa Fluor 488 secondary antibody (2ug/ml).