

## UK Office

### Everest Biotech Ltd

Cherwell Innovation Centre  
77 Heyford Park  
Upper Heyford  
Oxfordshire  
OX25 5HD  
UK

Enquiries:

[info@everestbiotech.com](mailto:info@everestbiotech.com)

Sales:

[sales@everestbiotech.com](mailto:sales@everestbiotech.com)

Tech support:

[support@everestbiotech.com](mailto:support@everestbiotech.com)

Tel: +44 (0)1869 238326

[www.everestbiotech.com](http://www.everestbiotech.com)

**Research Use Only. Not for  
diagnostic or therapeutic use.**

## EB11032 - Goat Anti-Tet2 (mouse) Antibody

Size: 100µg specific antibody in 200µl



### Target Protein

**Principal Names:** Tet2, tet oncogene family member 2, Ayu17-449, E130014J05Rik, MGC37385, mKIAA1546, methylcytosine dioxygenase TET2, probable methylcytosine dioxygenase TET2, tet oncogene 2, Ayu17-449, E130014J05Rik, methylcytosine dioxygenase TET2, MGC37385, mKIAA1546, probable methylcytosine dioxygenase TET2, tet oncogene 2, tet oncogene family member 2, Tet2

**Official Symbol:** Tet2

**Accession Number(s):** NP\_001035490.2; NP\_001333665.1

**Non-Human GeneID(s):** 214133 (mouse), 310859 (rat)

### Immunogen

Peptide with sequence C-QPSLTSAQINFSQT, from the internal region of the protein sequence according to NP\_001035490.2; NP\_001333665.1.

Please note the [peptide](#) is available for sale.

### Purification and Storage

Purified from goat serum by ammonium sulphate precipitation followed by antigen affinity chromatography using the immunizing peptide.

Supplied at 0.5 mg/ml in Tris saline, 0.02% sodium azide, pH7.3 with 0.5% bovine serum albumin.

Aliquot and store at -20°C. Minimize freezing and thawing.

### Applications Tested

**Peptide ELISA:** antibody detection limit dilution 1:16000.

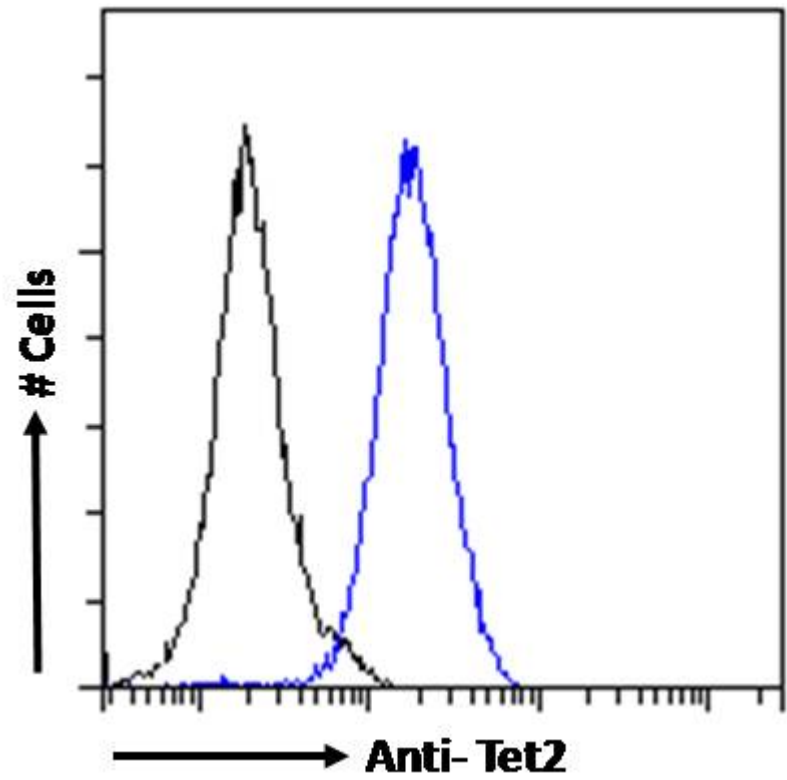
**Western blot:** Preliminary experiments gave an approx 200kDa band in Mouse Kidney and stomach lysate, after 1µg/ml antibody staining. (calculated MWt of 212kDa according to NP\_001035490.2. Primary incubation 1 hour at room temperature.

**Flow Cytometry:** Flow cytometric analysis of NIH3T3 cells. Recommended concentration: 10ug/ml.

### Species Reactivity

**Tested:** Mouse

**Expected from sequence similarity:** Mouse, Rat



EB11032 Flow cytometric analysis of paraformaldehyde fixed NIH3T3 cells (blue line), permeabilized with 0.5% Triton. Primary incubation 1hr (10ug/ml) followed by Alexa Fluor 488 secondary antibody (1ug/ml). IgG control: Unimmunized goat IgG (black line) followed by Alexa Fluor 488 secondary antibody.