



## UK Office

### Everest Biotech Ltd

Cherwell Innovation Centre  
77 Heyford Park  
Upper Heyford  
Oxfordshire  
OX25 5HD  
UK

Enquiries:

[info@everestbiotech.com](mailto:info@everestbiotech.com)

Sales:

[sales@everestbiotech.com](mailto:sales@everestbiotech.com)

Tech support:

[support@everestbiotech.com](mailto:support@everestbiotech.com)

Tel: +44 (0)1869 238326

Fax: +44 (0)1869 238327

## US Office

### Everest Biotech c/o Abcore

405 Maple Street, Suite A106  
Ramona,  
CA 92065  
USA

Inquiries:

[info@everestbiotech.com](mailto:info@everestbiotech.com)

Sales:

[usasales@everestbiotech.com](mailto:usasales@everestbiotech.com)

Tech support:

[support@everestbiotech.com](mailto:support@everestbiotech.com)

Tel: 888-320-4628 (toll-free)

Fax: 888-841-9041

[www.everestbiotech.com](http://www.everestbiotech.com)

**Research Use Only. Not for  
diagnostic or therapeutic use.**

## EB09559 - Goat Anti-TFB1M Antibody

Size: 100µg specific antibody in 200µl



## Target Protein

**Principal Names:** TFB1M, transcription factor B1, mitochondrial, CGI-75, CGI75, mtTFB, mtTFB1, OTTHUMP00000017473, S-adenosylmethionine-6-N\1, N\1-adenosyl(rRNA) dimethyltransferase 1, homolog of yeast mitochondrial transcription factor B, mitochondrial 12S rRNA dimethylase 1

**Official Symbol:** TFB1M

**Accession Number(s):** NP\_057104.2

**Human GeneID(s):** [51106](#)

## Immunogen

Peptide with sequence C-ELKRRKSKNEEKE, from the C Terminus of the protein sequence according to NP\_057104.2.

Please note the [peptide](#) is available for sale.

## Purification and Storage

Purified from goat serum by ammonium sulphate precipitation followed by antigen affinity chromatography using the immunizing peptide.

Supplied at 0.5 mg/ml in Tris saline, 0.02% sodium azide, pH7.3 with 0.5% bovine serum albumin.

Aliquot and store at -20°C. Minimize freezing and thawing.

## Applications Tested

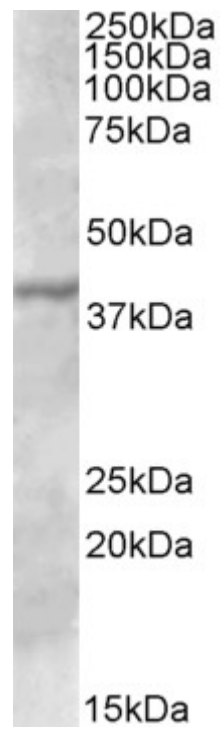
**Peptide ELISA:** antibody detection limit dilution 1:64000.

**Western blot:** Approx 38kDa band observed in lysates of cell line A431 (calculated MW of 39.5kDa according to NP\_057104.2). Recommended concentration: 0.3-1µg/ml.

## Species Reactivity

**Tested:** Human

**Expected from sequence similarity:** Human, Dog



EB09559 (0.3 $\mu$ g/ml) staining of A431 lysate (35 $\mu$ g protein in RIPA buffer). Primary incubation was 1 hour.  
Detected by chemiluminescence.