



UK Office

Everest Biotech Ltd

Cherwell Innovation Centre
77 Heyford Park
Upper Heyford
Oxfordshire
OX25 5HD
UK

Enquiries:

info@everestbiotech.com

Sales:

sales@everestbiotech.com

Tech support:

support@everestbiotech.com

Tel: +44 (0)1869 238326

www.everestbiotech.com

**Research Use Only. Not for
diagnostic or therapeutic use.**

EB10931 - Goat Anti-TFB2M Antibody

Size: 100µg specific antibody in 200µl



Target Protein

Principal Names: TFB2M, transcription factor B2, mitochondrial, FLJ22661, FLJ23182, Hkp1, mtTFB2, HCV NS5A-transactivated protein 5, S-adenosylmethionine-6-N', N'-adenosyl(rRNA) dimethyltransferase 2, dimethyladenosine transferase 2, mitochondrial, h-mtTFB2, hTFB

Official Symbol: TFB2M

Accession Number(s): NP_071761.1

Human GeneID(s): [64216](#)

Immunogen

Peptide with sequence KHCFCGRRSATVIDH, from the internal region of the protein sequence according to NP_071761.1.

Please note the [peptide](#) is available for sale.

Purification and Storage

Purified from goat serum by ammonium sulphate precipitation followed by antigen affinity chromatography using the immunizing peptide.

Supplied at 0.5 mg/ml in Tris saline, 0.02% sodium azide, pH7.3 with 0.5% bovine serum albumin.

Aliquot and store at -20°C. Minimize freezing and thawing.

Applications Tested

Peptide ELISA: antibody detection limit dilution 1:64000.

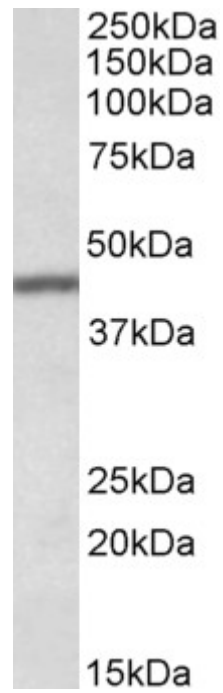
Western blot: Approx 45kDa band observed in Human Lung lysates (calculated MW of 45.3kDa according to NP_071761.1). Recommended concentration: 0.1-0.3µg/ml. Primary incubation was 1 hour.

IHC: Paraffin embedded Human Colon. Recommended concentration: 5µg/ml.

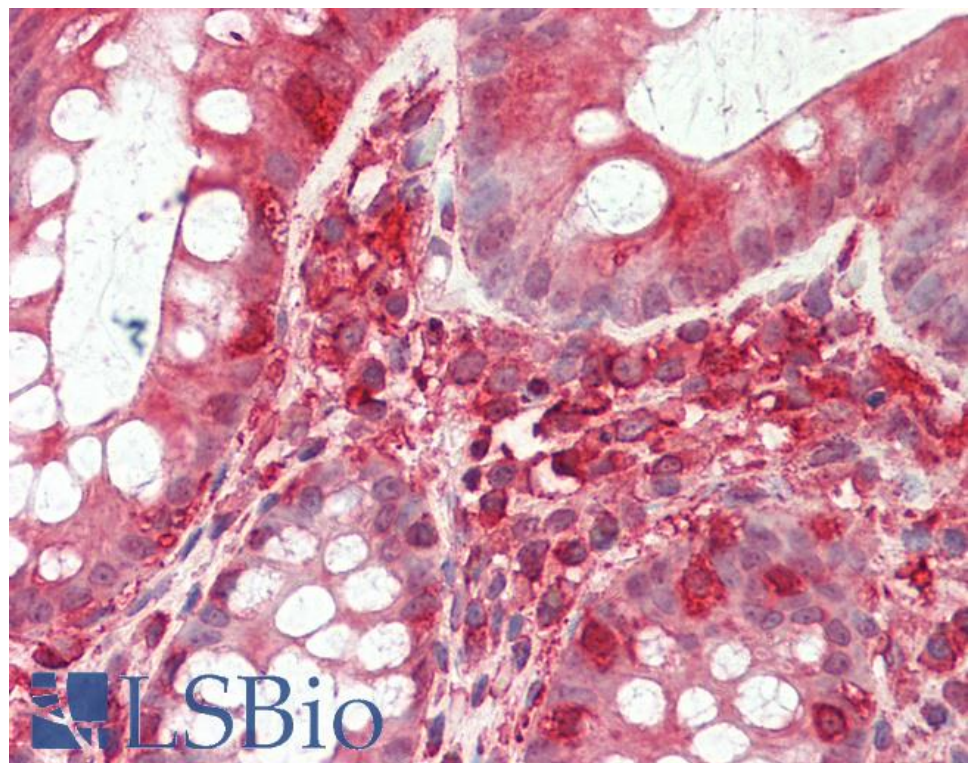
Species Reactivity

Tested: Human

Expected from sequence similarity: Human



EB10931 (0.1 μ g/ml) staining of Human Lung lysate (35 μ g protein in RIPA buffer). Detected by chemiluminescence.



EB10931 (5 μ g/ml) staining of paraffin embedded Human Colon. Steamed antigen retrieval with citrate buffer pH 6, AP-staining.