



UK Office

Everest Biotech Ltd

Cherwell Innovation Centre
77 Heyford Park
Upper Heyford
Oxfordshire
OX25 5HD
UK

Enquiries:

info@everestbiotech.com

Sales:

sales@everestbiotech.com

Tech support:

support@everestbiotech.com

Tel: +44 (0)1869 238326

Fax: +44 (0)1869 238327

US Office

Everest Biotech c/o Abcore

405 Maple Street, Suite A106
Ramona,
CA 92065
USA

Inquiries:

info@everestbiotech.com

Sales:

usasales@everestbiotech.com

Tech support:

support@everestbiotech.com

Tel: 888-320-4628 (toll-free)

Fax: 888-841-9041

www.everestbiotech.com

**Research Use Only. Not for
diagnostic or therapeutic use.**

EB10932 - Goat Anti-Tfb2m (mouse) Antibody

Size: 100µg specific antibody in 200µl



Target Protein

Principal Names: Tfb2m, transcription factor B2, mitochondrial, Hkp1, OTTMUSP00000025719, S-adenosylmethionine-6-N', N'-adenosyl(rRNA) dimethyltransferase 2, dimethyladenosine transferase 2, mitochondrial, house-keeping protein 1, mTFB2M, mitochondrial 12S rRNA dimethylase 2, mitochondrial transcription factor B2, mtTFB2

Official Symbol: Tfb2m

Accession Number(s): NP_032275.2

Non-Human GeneID(s): 15278 (mouse), 289307 (rat)

Immunogen

Peptide with sequence C-RNLVRDLLEHQNPS, from the internal region of the protein sequence according to NP_032275.2.

Please note the [peptide](#) is available for sale.

Purification and Storage

Purified from goat serum by ammonium sulphate precipitation followed by antigen affinity chromatography using the immunizing peptide.

Supplied at 0.5 mg/ml in Tris saline, 0.02% sodium azide, pH7.3 with 0.5% bovine serum albumin.

Aliquot and store at -20°C. Minimize freezing and thawing.

Applications Tested

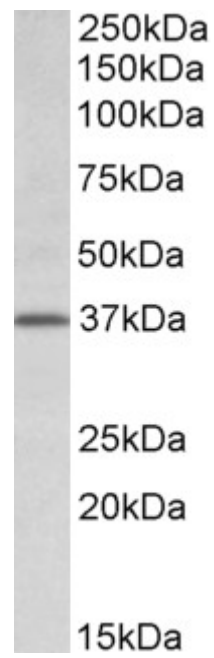
Peptide ELISA: antibody detection limit dilution 1:4000.

Western blot: Approx 37kDa band observed in Mouse and Rat Lung lysates (calculated MW of 45.9kDa according to NP_032275.2). This molecular weight is routinely observed by other sources. Recommended concentration: 0.5-2µg/ml.

Species Reactivity

Tested: Mouse, Rat

Expected from sequence similarity: Mouse, Rat



EB10932 (0.5 μ g/ml) staining of Rat Lung lysate (35 μ g protein in RIPA buffer). Primary incubation was 1 hour.
Detected by chemiluminescence.