



Everest Biotech Ltd  
Cherwell Innovation Centre  
77 Heyford Park  
Upper Heyford  
Oxfordshire  
OX25 5HD, United Kingdom

[everestbiotech.com](http://everestbiotech.com)

[sales@everestbiotech.com](mailto:sales@everestbiotech.com)

[support@everestbiotech.com](mailto:support@everestbiotech.com)

Tel +44 1869 238326

Fax +44 1869 238327

**Research Use Only. Not for diagnostic or therapeutic use.**

Storage: For long-term storage keep aliquots at -20°C. (Store no longer than 12 months at 4°C). Minimize freezing and thawing.

## EB05424 - Goat Anti-TFE3 Antibody

Size: 100µg specific antibody in 200µl



### Target Protein

**Principal Names:** transcription factor E3, transcription factor E family, member A, Transcription factor for IgH enhancer, Renal cell carcinoma, papillary, OTTHUMP00000024272, bHLHe33, TFEA, RCCP2, Transcription factor for IgH enhancer, transcription factor binding to IGHM enhancer 3, TFE3

**Official Symbol:** TFE3

**Accession Number(s):** NP\_006512.2

**Human GeneID(s):** [7030](#)

### Immunogen

Peptide with sequence SHAAEPARDGVEAS-C, from the N Terminus of the protein sequence according to NP\_006512.2.

Please note the [peptide](#) is available for sale.

### Purification and Storage

Purified from goat serum by ammonium sulphate precipitation followed by antigen affinity chromatography using the immunizing peptide.

Supplied at 0.5 mg/ml in Tris saline, 0.02% sodium azide, pH7.3 with 0.5% bovine serum albumin.

Aliquot and store at -20°C. Minimize freezing and thawing.

### Applications Tested

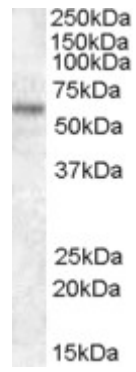
**Peptide ELISA:** antibody detection limit dilution 1:32000.

**Western blot:** Approx 60kDa band observed in lysates of HEK293 (calculated MW of 61.5kDa according to NP\_006512.2). Recommended concentration: 1-3µg/ml.

### Species Reactivity

**Tested:** Human

**Expected from sequence similarity:** Human, Mouse, Dog, Cow



EB05424 (1 $\mu$ g/ml) staining of HEK293 lysate (35 $\mu$ g protein in RIPA buffer). Primary incubation was 1 hour.  
Detected by chemiluminescence.