



UK Office

Everest Biotech Ltd

Cherwell Innovation Centre
77 Heyford Park
Upper Heyford
Oxfordshire
OX25 5HD
UK

Enquiries:

info@everestbiotech.com

Sales:

sales@everestbiotech.com

Tech support:

support@everestbiotech.com

Tel: +44 (0)1869 238326

www.everestbiotech.com

**Research Use Only. Not for
diagnostic or therapeutic use.**

EB09795-B - Goat Anti-TGFBI, Biotinylated Antibody

Size: 100µg specific antibody in 200µl



Target Protein

Principal Names: BIGH3, CDB1, CDG2, CDGG1, CSD, CSD1, CSD2, CSD3, EBMD, kerato-epithelin, LCD1, RGD-containing collagen-associated protein, transforming growth factor, beta-induced, 68kDa, TGFBI

Official Symbol: TGFBI

Accession Number(s): NP_000349.1

Human GeneID(s): [7045](#)

Non-Human GeneID(s): 21810 (mouse), 24511 (rat)

Immunogen

Peptide with sequence C-QLYTDRTEKLRPE., from the internal region of the protein sequence according to NP_000349.1.

Please note the [peptide](#) is available for sale.

Purification and Storage

Purified from goat serum by ammonium sulphate precipitation followed by antigen affinity chromatography using the immunizing peptide.

Supplied at 0.5 mg/ml in Tris saline, 0.02% sodium azide, pH7.3 with 0.5% bovine serum albumin.

Aliquot and store at -20°C. Minimize freezing and thawing.

Applications Tested

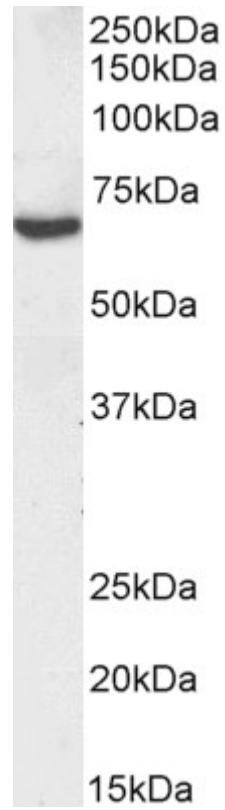
Peptide ELISA: antibody detection limit dilution 1:32000.

Western blot: Approx 70kDa band observed in Human Kidney lysates (calculated MW of 74.7kDa according to Human NP_000349.1). Recommended concentration: 0.2-0.5µg/ml.

Species Reactivity

Tested: Human

Expected from sequence similarity: Human, Mouse, Rat, Dog



Biotinylated EB09795 (0.3 μ g/ml) staining of Human Kidney lysate (35 μ g protein in RIPA buffer). Primary incubation was 1 hour. Detected by chemiluminescence, using streptavidin-HRP and using NAP blocker as a substitute for skimmed milk.