

## UK Office

### Everest Biotech Ltd

Cherwell Innovation Centre  
77 Heyford Park  
Upper Heyford  
Oxfordshire  
OX25 5HD  
UK

Enquiries:

[info@everestbiotech.com](mailto:info@everestbiotech.com)

Sales:

[sales@everestbiotech.com](mailto:sales@everestbiotech.com)

Tech support:

[support@everestbiotech.com](mailto:support@everestbiotech.com)

Tel: +44 (0)1869 238326

Fax: +44 (0)1869 238327

## US Office

### Everest Biotech c/o Abcore

405 Maple Street, Suite A106  
Ramona,  
CA 92065  
USA

Inquiries:

[info@everestbiotech.com](mailto:info@everestbiotech.com)

Sales:

[usasales@everestbiotech.com](mailto:usasales@everestbiotech.com)

Tech support:

[support@everestbiotech.com](mailto:support@everestbiotech.com)

Tel: 888-320-4628 (toll-free)

Fax: 888-841-9041

[www.everestbiotech.com](http://www.everestbiotech.com)

**Research Use Only. Not for  
diagnostic or therapeutic use.**

## EB11053 - Goat Anti-TGFBR1 (aa50-63) Antibody

Size: 100µg specific antibody in 200µl



## Target Protein

**Principal Names:** TGFBR1, transforming growth factor, beta receptor 1, AAT5, ACVRLK4, ALK-5, ALK5, LDS1A, LDS2A, SKR4, TGFR-1, TGF-beta receptor type I, TGF-beta receptor type-1, TGF-beta type I receptor, activin A receptor type II-like kinase, 53kD, activin A receptor type II-like kinase, 53kDa, activin receptor-like kinase 5, serine/threonine-protein kinase receptor R4, tbetaR-I, transforming growth factor beta receptor I, transforming growth factor, beta receptor I (activin A receptor type II-like kinase, 53kD), transforming growth factor-beta receptor type I, AAT5, activin A receptor type II-like kinase, 53kD, activin A receptor type II-like kinase, 53kDa, activin receptor-like kinase 5, ACVRLK4, ALK5, ALK-5, LDS1A, LDS2A, serine/threonine-protein kinase receptor R4, SKR4, tbetaR-I, TGF-beta receptor type I, TGF-beta receptor type-1, TGF-beta type I receptor, TGFR-1, transforming growth factor beta receptor I, transforming growth factor, beta receptor 1, transforming growth factor, beta receptor I (activin A receptor type II-like kinase, 53kD), transforming growth factor-beta receptor type I, TGFBR1

**Official Symbol:** TGFBR1

**Accession Number(s):** NP\_004603.1; NP\_001124388.1

**Human GeneID(s):** [7046](#)

**Non-Human GeneID(s):** 21812 (mouse), 29591 (rat)

**Important Comments:** This antibody is expected to recognize both reported isoforms (NP\_004603.1; NP\_001124388.1). The immunizing peptide represents part of a potential extracellular domain.

## Immunogen

Peptide with sequence TDGLCFVSVTETTD, from the internal region of the protein sequence according to NP\_004603.1; NP\_001124388.1.

Please note the [peptide](#) is available for sale.

## Purification and Storage

Purified from goat serum by ammonium sulphate precipitation followed by antigen affinity chromatography using the immunizing peptide.

Supplied at 0.5 mg/ml in Tris saline, 0.02% sodium azide, pH7.3 with 0.5% bovine serum albumin.

Aliquot and store at -20°C. Minimize freezing and thawing.

## Applications Tested

**Peptide ELISA:** antibody detection limit dilution 1:64000.

**Western blot:** Approx 55kDa band observed in Rat Liver and Rat Lung lysates (calculated MW of 55.6kDa according to Rat NP\_036907.2). Recommended concentration: 0.03-0.1µg/ml. Primary incubation 1 hour at room temperature.

**IHC:** Paraffin embedded Human Adrenal Gland and Small Intestine. Recommended concentration: 5µg/ml.

**Flow Cytometry:** Flow cytometric analysis of HeLa cells. Recommended concentration: 10ug/ml.

**Immunofluorescence:** This antibody is not recommended for IF testing.

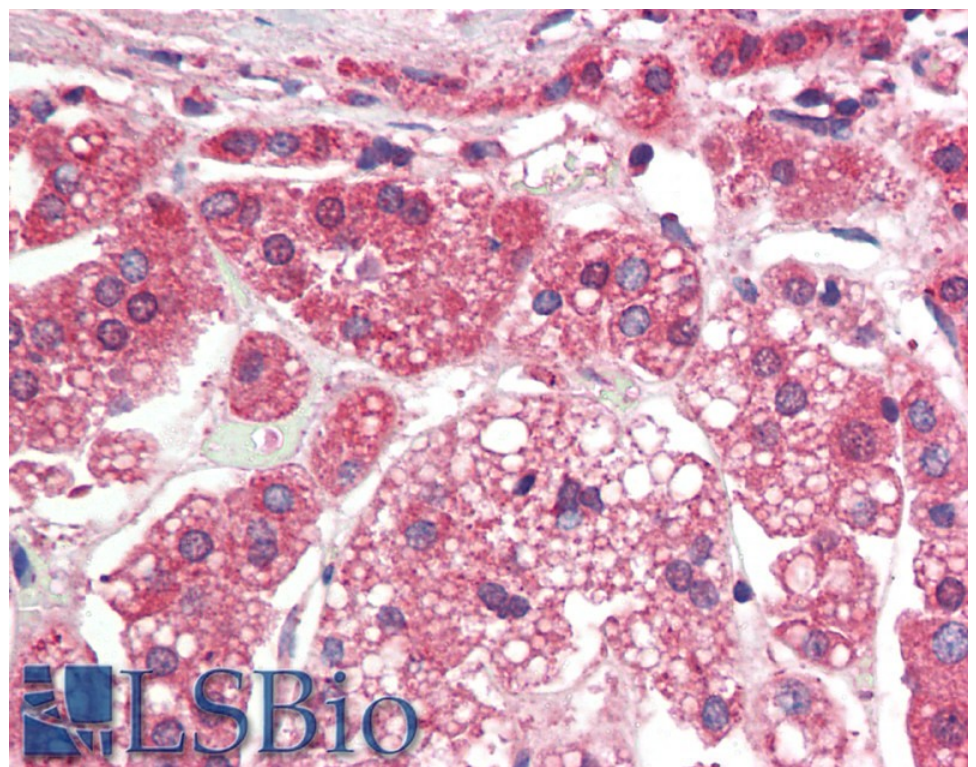
## Species Reactivity

**Tested:** Human, Rat

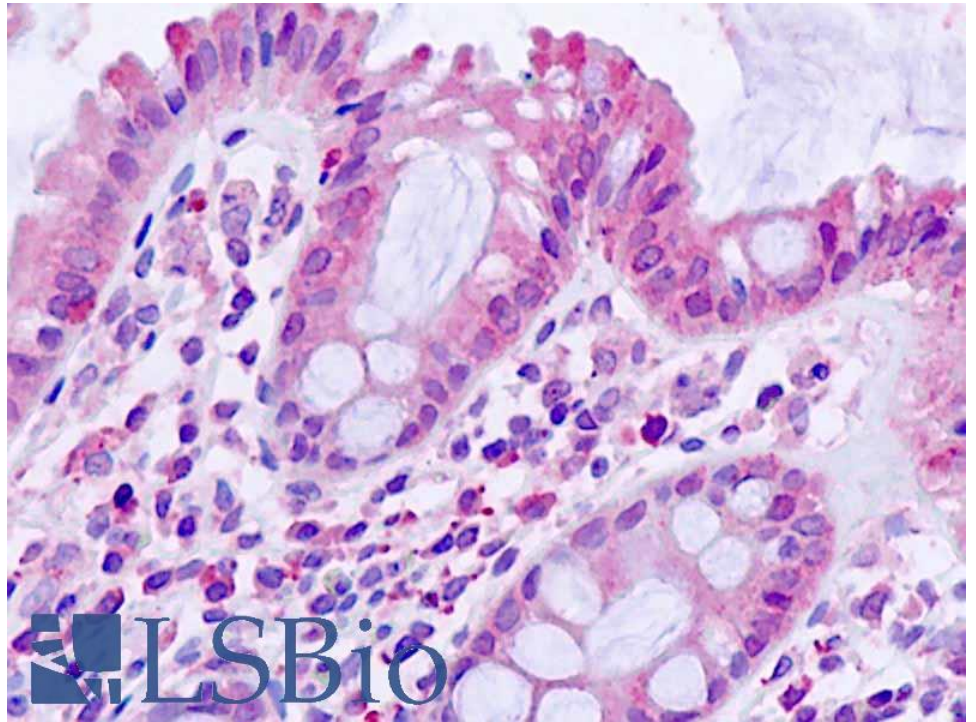
**Expected from sequence similarity:** Human, Mouse, Rat, Dog, Pig, Cow



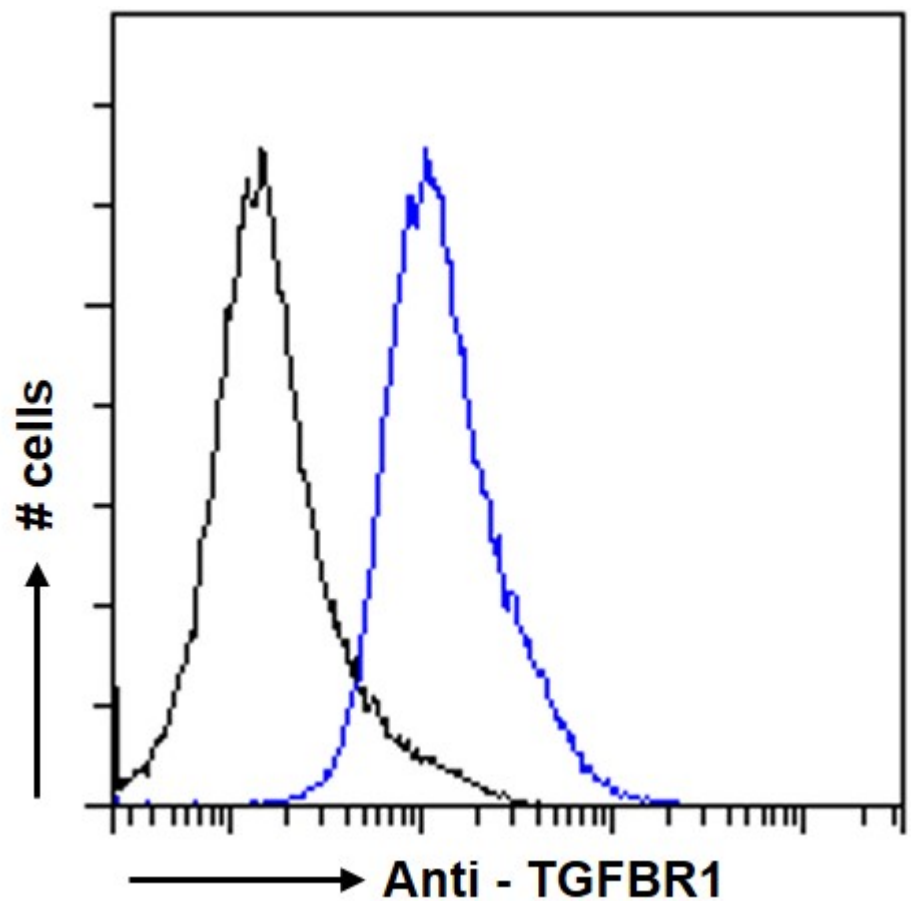
EB11053 (0.1µg/ml) staining of Rat Liver (A) and (0.03ug/ml) Lung (B) lysate (35µg protein in RIPA buffer).  
Detected by chemiluminescence.



EB11053 (5µg/ml) staining of paraffin embedded Human Adrenal Gland. Steamed antigen retrieval with citrate buffer pH 6, AP-staining.



EB11053 (5µg/ml) staining of paraffin embedded Human Small Intestine. Steamed antigen retrieval with citrate buffer pH 6, AP-staining.



EB11053 Flow cytometric analysis of paraformaldehyde fixed HeLa cells (blue line), permeabilized with 0.5% Triton. Primary incubation 1hr (10ug/ml) followed by Alexa Fluor 488 secondary antibody (1ug/ml). IgG control: Unimmunized goat IgG (black line) followed by Alexa Fluor 488 secondary antibody.