



UK Office

Everest Biotech Ltd

Cherwell Innovation Centre
77 Heyford Park
Upper Heyford
Oxfordshire
OX25 5HD
UK

Enquiries:

info@everestbiotech.com

Sales:

sales@everestbiotech.com

Tech support:

support@everestbiotech.com

Tel: +44 (0)1869 238326

Fax: +44 (0)1869 238327

US Office

Everest Biotech c/o Abcore

405 Maple Street, Suite A106
Ramona,
CA 92065
USA

Inquiries:

info@everestbiotech.com

Sales:

usasales@everestbiotech.com

Tech support:

support@everestbiotech.com

Tel: 888-320-4628 (toll-free)

Fax: 888-841-9041

www.everestbiotech.com

**Research Use Only. Not for
diagnostic or therapeutic use.**

EB06910 - Goat Anti-TGIF2 Antibody

Size: 100µg specific antibody in 200µl



Target Protein

Principal Names: TGIF2, TGFB-induced factor 2 (TALE family homeobox), homeobox protein TGIF2, 5\1-TG-3\1 interacting factor 2, TGF(beta)-induced transcription factor 2, transcription growth factor-beta-induced factor 2, TGFB-induced factor homeobox 2, OTTHUMP00000030849

Official Symbol: TGIF2

Accession Number(s): NP_068581.1

Human GeneID(s): [60436](#)

Non-Human GeneID(s): 228839 (mouse)

Immunogen

Peptide with sequence C-EMELQKQQDP, from the internal region of the protein sequence according to NP_068581.1.

Please note the [peptide](#) is available for sale.

Purification and Storage

Purified from goat serum by ammonium sulphate precipitation followed by antigen affinity chromatography using the immunizing peptide.

Supplied at 0.5 mg/ml in Tris saline, 0.02% sodium azide, pH7.3 with 0.5% bovine serum albumin.

Aliquot and store at -20°C. Minimize freezing and thawing.

Applications Tested

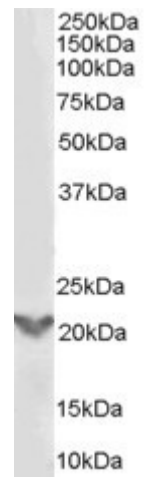
Peptide ELISA: antibody detection limit dilution 1:16000.

Western blot: Approx 22kDa band observed in lysates of A431, A549 and HEK293 cell lines (calculated MW of 25.9kDa according to NP_068581.1). Recommended concentration: 0.3-1.0µg/ml.

Species Reactivity

Tested: Human

Expected from sequence similarity: Human, Mouse, Rat, Dog, Pig



EB06910 (0.3 μ g/ml) staining of A431 lysate (35 μ g protein in RIPA buffer). Primary incubation was 1 hour.
Detected by chemiluminescence.