



## UK Office

### Everest Biotech Ltd

Cherwell Innovation Centre  
77 Heyford Park  
Upper Heyford  
Oxfordshire  
OX25 5HD  
UK

Enquiries:

[info@everestbiotech.com](mailto:info@everestbiotech.com)

Sales:

[sales@everestbiotech.com](mailto:sales@everestbiotech.com)

Tech support:

[support@everestbiotech.com](mailto:support@everestbiotech.com)

Tel: +44 (0)1869 238326

Fax: +44 (0)1869 238327

## US Office

### Everest Biotech c/o Abcore

405 Maple Street, Suite A106  
Ramona,  
CA 92065  
USA

Inquiries:

[info@everestbiotech.com](mailto:info@everestbiotech.com)

Sales:

[usasales@everestbiotech.com](mailto:usasales@everestbiotech.com)

Tech support:

[support@everestbiotech.com](mailto:support@everestbiotech.com)

Tel: 888-320-4628 (toll-free)

Fax: 888-841-9041

[www.everestbiotech.com](http://www.everestbiotech.com)

**Research Use Only. Not for  
diagnostic or therapeutic use.**

## EB07852 - Goat Anti-TGM2 Antibody

Size: 100µg specific antibody in 200µl



### Target Protein

**Principal Names:** TGM2, transglutaminase 2 (C polypeptide, protein-glutamine-gamma-glutamyltransferase), TG2, TGC, C polypeptide, TGase C, TGase-H, protein-glutamine-gamma-glutamyltransferase, tissue transglutaminase, transglutaminase 2, transglutaminase C

**Official Symbol:** TGM2

**Accession Number(s):** NP\_004604.2

**Human GeneID(s):** [7052](#)

**Important Comments:** This antibody is expected to recognise isoform a (NP\_004604.2) only.

### Immunogen

Peptide with sequence C-ESDKLKAVKGFRN, from the C Terminus of the protein sequence according to NP\_004604.2.

Please note the [peptide](#) is available for sale.

### Purification and Storage

Purified from goat serum by ammonium sulphate precipitation followed by antigen affinity chromatography using the immunizing peptide.

Supplied at 0.5 mg/ml in Tris saline, 0.02% sodium azide, pH7.3 with 0.5% bovine serum albumin.

Aliquot and store at -20°C. Minimize freezing and thawing.

### Applications Tested

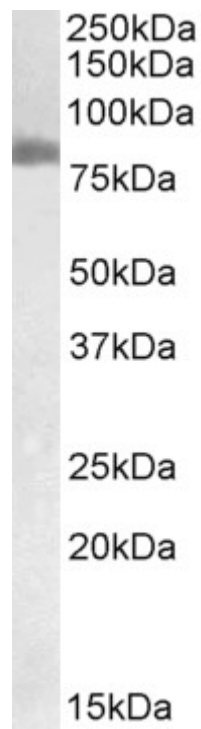
**Peptide ELISA:** antibody detection limit dilution 1:128000.

**Western blot:** Approx 80kDa band observed in Human Pancreas cancer lysates (calculated MW of 77.3kDa according to NP\_004604.2). Recommended concentration: 0.05-0.2µg/ml.

### Species Reactivity

**Tested:** Human

**Expected from sequence similarity:** Human, Mouse, Rat, Dog, Cow



EB07852 (0.05µg/ml) staining of Human Pancreas cancer lysate (35µg protein in RIPA buffer). Primary incubation was 1 hour. Detected by chemiluminescence.