

## UK Office

### Everest Biotech Ltd

Cherwell Innovation Centre  
77 Heyford Park  
Upper Heyford  
Oxfordshire  
OX25 5HD  
UK

Enquiries:

[info@everestbiotech.com](mailto:info@everestbiotech.com)

Sales:

[sales@everestbiotech.com](mailto:sales@everestbiotech.com)

Tech support:

[support@everestbiotech.com](mailto:support@everestbiotech.com)

Tel: +44 (0)1869 238326

[www.everestbiotech.com](http://www.everestbiotech.com)

**Research Use Only. Not for  
diagnostic or therapeutic use.**

## EB11119 - Goat Anti-Tgm6 (mouse) Antibody

Size: 100µg specific antibody in 200µl



### Target Protein

**Principal Names:** A030011P16, OTTMUSP00000016517, protein-glutamine

gamma-glutamyltransferase 6, RP23-20A6.2, TGM3L, TGY, transglutaminase 6, Tgm6

**Official Symbol:** Tgm6

**Accession Number(s):** NP\_808394.1; NP\_001276676.1

**Human GeneID(s):** [343641](#)

**Non-Human GeneID(s):** 241636 (mouse), 296152 (rat)

**Important Comments:** This antibody is expected to recognize both reported isoforms (NP\_808394.1; NP\_001276676.1). Variants NP\_001276676.1, NP\_001276677.1 and NP\_001276678.1 represent identical protein.

### Immunogen

Peptide with sequence C-DKYVDSYGRTLED, from the C Terminus of the protein sequence according to NP\_808394.1; NP\_001276676.1.

Please note the [peptide](#) is available for sale.

### Purification and Storage

Purified from goat serum by ammonium sulphate precipitation followed by antigen affinity chromatography using the immunizing peptide.

Supplied at 0.5 mg/ml in Tris saline, 0.02% sodium azide, pH7.3 with 0.5% bovine serum albumin.

Aliquot and store at -20°C. Minimize freezing and thawing.

### Applications Tested

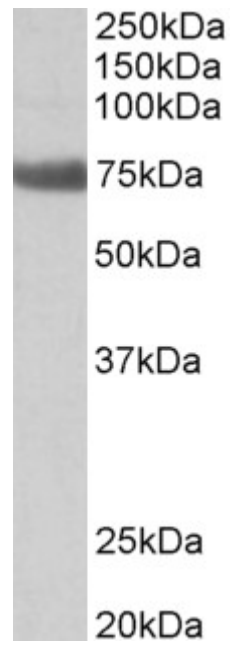
**Peptide ELISA:** antibody detection limit dilution 1:16000.

**Western blot:** Approx 75kDa band observed in Rat Lung lysates (calculated MW of 79.3kDa according to Mouse NP\_945345.2 and 80.4kDa according to Rat XP\_230601.5). Recommended concentration: 1-3µg/ml.

### Species Reactivity

**Tested:** Rat

**Expected from sequence similarity:** Human, Mouse, Rat, Dog, Pig, Cow



EB11119 (2 $\mu$ g/ml) staining of Rat Lung lysate (35 $\mu$ g protein in RIPA buffer). Primary incubation was 1 hour.  
Detected by chemiluminescence.