



UK Office

Everest Biotech Ltd

Cherwell Innovation Centre
77 Heyford Park
Upper Heyford
Oxfordshire
OX25 5HD
UK

Enquiries:

info@everestbiotech.com

Sales:

sales@everestbiotech.com

Tech support:

support@everestbiotech.com

Tel: +44 (0)1869 238326

Fax: +44 (0)1869 238327

US Office

Everest Biotech c/o Abcore

405 Maple Street, Suite A106
Ramona,
CA 92065
USA

Inquiries:

info@everestbiotech.com

Sales:

usasales@everestbiotech.com

Tech support:

support@everestbiotech.com

Tel: 888-320-4628 (toll-free)

Fax: 888-841-9041

www.everestbiotech.com

**Research Use Only. Not for
diagnostic or therapeutic use.**

EB11119 - Goat Anti-Tgm6 (mouse) Antibody

Size: 100µg specific antibody in 200µl



Target Protein

Principal Names: A030011P16, OTTMUSP00000016517, protein-glutamine

gamma-glutamyltransferase 6, RP23-20A6.2, TGM3L, TGY, transglutaminase 6, Tgm6

Official Symbol: Tgm6

Accession Number(s): NP_808394.1; NP_001276676.1

Human GeneID(s): [343641](#)

Non-Human GeneID(s): 241636 (mouse), 296152 (rat)

Important Comments: This antibody is expected to recognize both reported isoforms (NP_808394.1; NP_001276676.1). Variants NP_001276676.1, NP_001276677.1 and NP_001276678.1 represent identical protein.

Immunogen

Peptide with sequence C-DKYVDSYGRTLED, from the C Terminus of the protein sequence according to NP_808394.1; NP_001276676.1.

Please note the [peptide](#) is available for sale.

Purification and Storage

Purified from goat serum by ammonium sulphate precipitation followed by antigen affinity chromatography using the immunizing peptide.

Supplied at 0.5 mg/ml in Tris saline, 0.02% sodium azide, pH7.3 with 0.5% bovine serum albumin.

Aliquot and store at -20°C. Minimize freezing and thawing.

Applications Tested

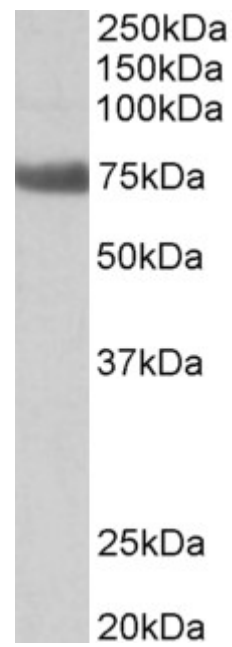
Peptide ELISA: antibody detection limit dilution 1:16000.

Western blot: Approx 75kDa band observed in Rat Lung lysates (calculated MW of 79.3kDa according to Mouse NP_945345.2 and 80.4kDa according to Rat XP_230601.5). Recommended concentration: 1-3µg/ml.

Species Reactivity

Tested: Rat

Expected from sequence similarity: Human, Mouse, Rat, Dog, Pig, Cow



EB11119 (2 μ g/ml) staining of Rat Lung lysate (35 μ g protein in RIPA buffer). Primary incubation was 1 hour.
Detected by chemiluminescence.