



Everest Biotech Ltd
Cherwell Innovation Centre
77 Heyford Park
Upper Heyford
Oxfordshire
OX25 5HD, United Kingdom

everestbiotech.com

sales@everestbiotech.com

support@everestbiotech.com

Tel +44 1869 238326

Fax +44 1869 238327

**Research Use Only. Not for
diagnostic or therapeutic use.**

Storage: For long-term storage
keep aliquots at -20°C. (Store no
longer than 12 months at 4°C).
Minimize freezing and thawing.

EB05510 - Goat Anti-Thioredoxin Reductase 1 Antibody

Size: 100µg specific antibody in 200µl



Target Protein

Principal Names: thioredoxin reductase GRIM-12, oxidoreductase, KM-102-derived reductase-like factor, TRXR1, TR, MGC9145, GRIM-12, TXNR, TR1, thioredoxin reductase 1, TXNRD1

Official Symbol: TXNRD1

Accession Number(s): NP_003321.2; NP_877393.1; NP_877419.1; NP_877420.1; NP_001087240.1

Human GeneID(s): [7296](#)

Important Comments: This antibody is expected to recognise reported isoform 1 (NP_003321.2), isoform 2 (NP_877393.1; NP_877419.1; NP_877420.1) and isoform 3 (NP_001087240.1)

Immunogen

Peptide with sequence TKRSGASILQAGC, from the C Terminus of the protein sequence according to NP_003321.2; NP_877393.1; NP_877419.1; NP_877420.1; NP_001087240.1.

Please note the [peptide](#) is available for sale.

Purification and Storage

Purified from goat serum by ammonium sulphate precipitation followed by antigen affinity chromatography using the immunizing peptide.

Supplied at 0.5 mg/ml in Tris saline, 0.02% sodium azide, pH7.3 with 0.5% bovine serum albumin.

Aliquot and store at -20°C. Minimize freezing and thawing.

Applications Tested

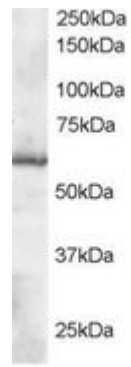
Peptide ELISA: antibody detection limit dilution 1:32000.

Western blot: Approx 60kDa band observed in Human Placenta lysates (predicted MW of 57kDa according to NP_003321). Recommended for use at 0.1-1µg/ml.

Species Reactivity

Tested: Human

Expected from sequence similarity: Human, Pig



EB05510 staining (0.1µg/ml) of Human Placenta lysate (RIPA buffer, 35µg total protein per lane). Primary incubated for 1 hour. Detected by western blot using chemiluminescence.