



UK Office

Everest Biotech Ltd

Cherwell Innovation Centre
77 Heyford Park
Upper Heyford
Oxfordshire
OX25 5HD
UK

Enquiries:

info@everestbiotech.com

Sales:

sales@everestbiotech.com

Tech support:

support@everestbiotech.com

Tel: +44 (0)1869 238326

Fax: +44 (0)1869 238327

US Office

Everest Biotech c/o Abcore

405 Maple Street, Suite A106
Ramona,
CA 92065
USA

Inquiries:

info@everestbiotech.com

Sales:

usasales@everestbiotech.com

Tech support:

support@everestbiotech.com

Tel: 888-320-4628 (toll-free)

Fax: 888-841-9041

www.everestbiotech.com

**Research Use Only. Not for
diagnostic or therapeutic use.**

EB11889 - Goat Anti-THNSL2 (aa192-204) Antibody

Size: 100µg specific antibody in 200µl



Target Protein

Principal Names:

Official Symbol: THNSL2

Accession Number(s): NP_060741.3; NP_001231605.1; NP_001231607.1

Human GeneID(s): [55258](#)

Important Comments: This antibody is expected to recognize all reported isoforms (NP_060741.3; NP_001231605.1; NP_001231607.1).

Immunogen

Peptide with sequence C-EGNSDELDEPIKT, from the internal region of the protein sequence according to NP_060741.3; NP_001231605.1; NP_001231607.1.

Please note the [peptide](#) is available for sale.

Purification and Storage

Purified from goat serum by ammonium sulphate precipitation followed by antigen affinity chromatography using the immunizing peptide.

Supplied at 0.5 mg/ml in Tris saline, 0.02% sodium azide, pH7.3 with 0.5% bovine serum albumin.

Aliquot and store at -20°C. Minimize freezing and thawing.

Applications Tested

Peptide ELISA: antibody detection limit dilution 1:128000.

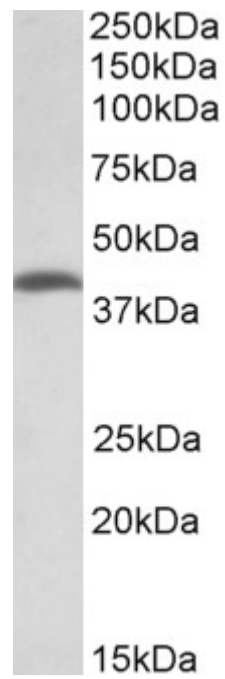
Western blot: Approx 40kDa band observed in Human Colorectal cancer lysates (calculated MW of 45.0kDa according to NP_001231605.1). Recommended concentration: 1-3µg/ml. Primary incubation was 1 hour.

IHC: Paraffin embedded Human Skeletal Muscle. Recommended concentration: 5µg/ml.

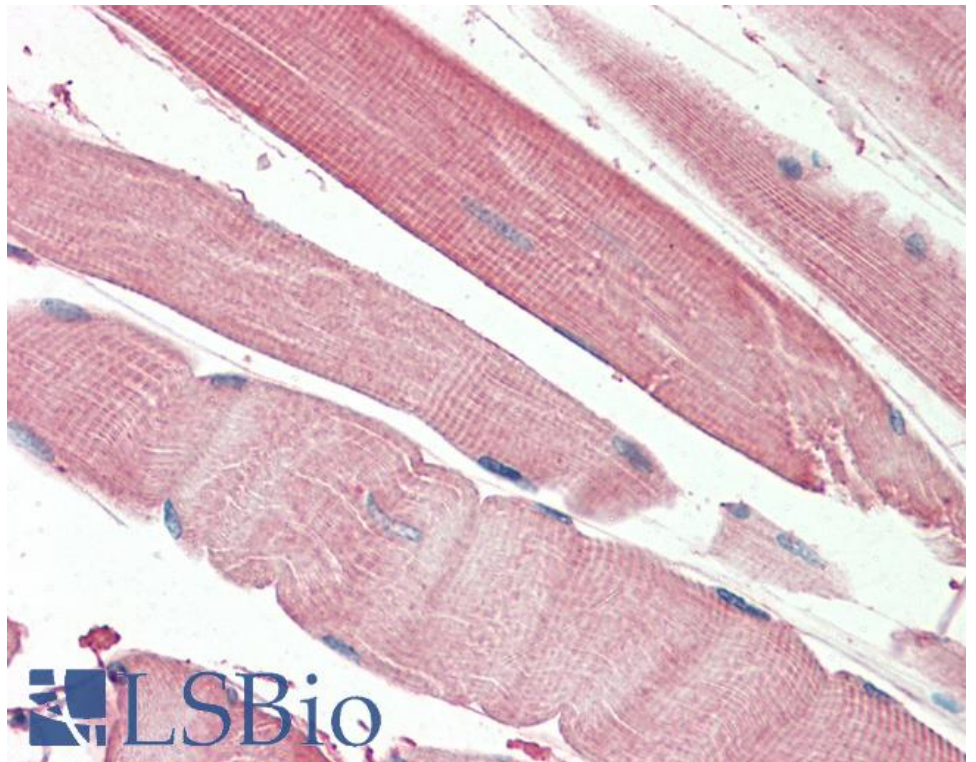
Species Reactivity

Tested: Human

Expected from sequence similarity: Human, Cow



EB11889 (2 μ g/ml) staining of Human Colorectal Cancer lysate (35 μ g protein in RIPA buffer). Detected by chemiluminescence.



EB11889 (5 μ g/ml) staining of paraffin embedded Human Skeletal Muscle. Steamed antigen retrieval with citrate buffer pH 6, AP-staining.