

UK Office

Everest Biotech Ltd

Cherwell Innovation Centre
77 Heyford Park
Upper Heyford
Oxfordshire
OX25 5HD
UK

Enquiries:

info@everestbiotech.com

Sales:

sales@everestbiotech.com

Tech support:

support@everestbiotech.com

Tel: +44 (0)1869 238326

www.everestbiotech.com

**Research Use Only. Not for
diagnostic or therapeutic use.**

EB07965 - Goat Anti-THRA Antibody

Size: 100µg specific antibody in 200µl



Target Protein

Principal Names: THRA, thyroid hormone receptor, alpha (erythroblastic leukemia viral (v-erb-a) oncogene homolog, avian), AR7, EAR7, ERB-T-1, ERBA, ERBA1, MGC000261, MGC43240, NR1A1, THRA1, THRA2, c-ERBA-1, ERBA-related 7, avian erythroblastic leukemia viral (v-erb-a) oncogene homolog, thyroid hormone receptor, alpha, triiodothyronine receptor

Official Symbol: THRA

Accession Number(s): NP_955366.1; NP_003241.2

Human GeneID(s): [7067](#)

Non-Human GeneID(s): 21833 (mouse), 81812 (rat)

Important Comments: This antibody is expected to recognize both reported isoforms (NP_955366.1; NP_003241.2). This antibody is not expected to cross-react to THRB.

Immunogen

Peptide with sequence C-KEEMIRSLQGRP, from the internal region of the protein sequence according to NP_955366.1; NP_003241.2.

Please note the [peptide](#) is available for sale.

Purification and Storage

Purified from goat serum by ammonium sulphate precipitation followed by antigen affinity chromatography using the immunizing peptide.

Supplied at 0.5 mg/ml in Tris saline, 0.02% sodium azide, pH7.3 with 0.5% bovine serum albumin.

Aliquot and store at -20°C. Minimize freezing and thawing.

Applications Tested

Peptide ELISA: antibody detection limit dilution 1:32000.

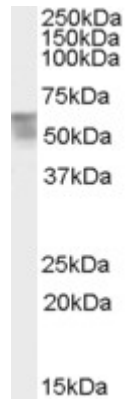
Western blot: Approx 60+50kDa bands observed in Human Bone Marrow lysates (calculated MW of 54.8kDa according to NP_003241.2 and of 46.8kDa according to NP_955366.1). Recommended concentration: 0.5-1µg/ml. Primary incubation was 1 hour.

IHC: Paraffin embedded Human Tonsil and Breast. Recommended concentration: 3.75µg/ml.

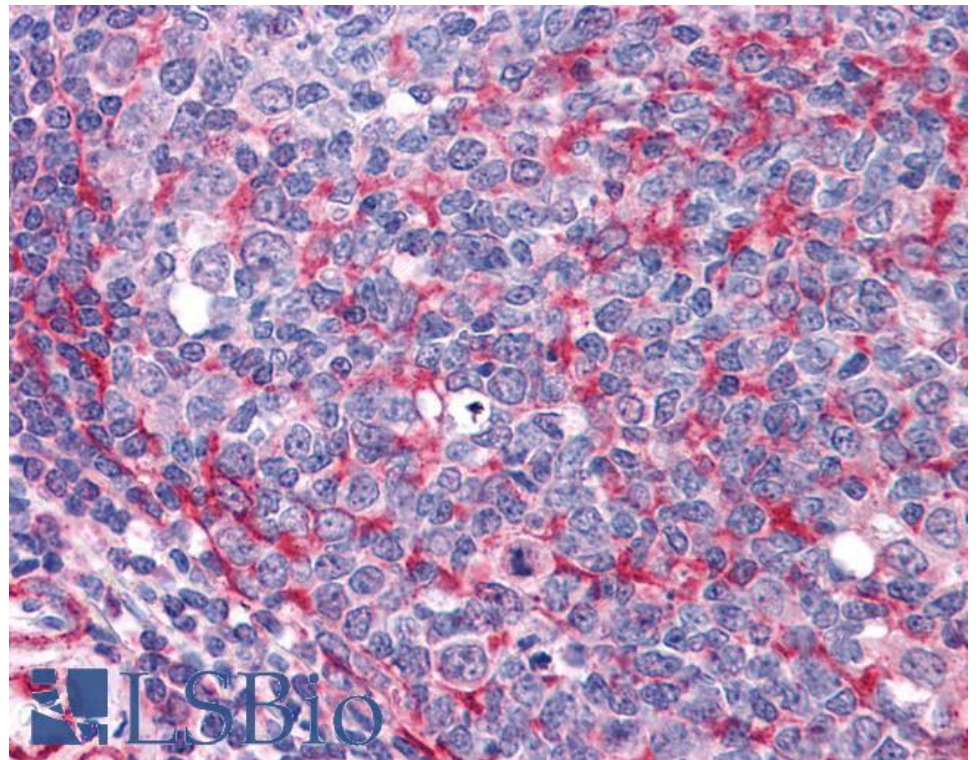
Species Reactivity

Tested: Human

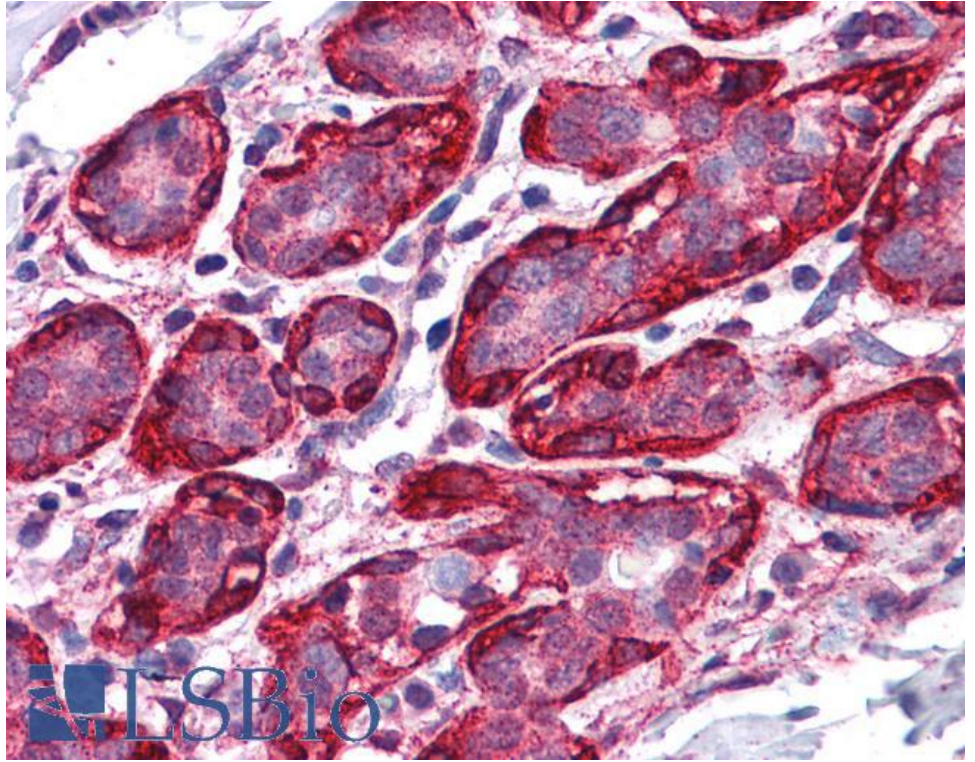
Expected from sequence similarity: Human, Mouse, Rat, Dog, Pig, Cow



EB07965 (0.5 μ g/ml) staining of Human Bone Marrow lysate (35 μ g protein in RIPA buffer). Detected by chemiluminescence.



EB07965 (3.75 μ g/ml) staining of paraffin embedded Human Tonsil. Steamed antigen retrieval with citrate buffer pH 6, AP-staining.



EB07965 (3.75µg/ml) staining of paraffin embedded Human Breast. Steamed antigen retrieval with citrate buffer pH 6, AP-staining.