



UK Office

Everest Biotech Ltd

Cherwell Innovation Centre
77 Heyford Park
Upper Heyford
Oxfordshire
OX25 5HD
UK

Enquiries:

info@everestbiotech.com

Sales:

sales@everestbiotech.com

Tech support:

support@everestbiotech.com

Tel: +44 (0)1869 238326

www.everestbiotech.com

**Research Use Only. Not for
diagnostic or therapeutic use.**

EB07966 - Goat Anti-Thrb (zebrafish) Antibody

Size: 100µg specific antibody in 200µl



Target Protein

Principal Names: thrb, thyroid hormone receptor beta, NR1A2, TR-beta, TR[b]1, fj24f03, trb, wu:fj24f03

Official Symbol: thrb

Accession Number(s): NP_571415.1

Important Comments: This antibody is not expected to cross-react to Thra.

Immunogen

Peptide with sequence C-DIGSAPIVNAPEGNKVD, from the internal region of the protein sequence according to NP_571415.1.

Please note the [peptide](#) is available for sale.

Purification and Storage

Purified from goat serum by ammonium sulphate precipitation followed by antigen affinity chromatography using the immunizing peptide.

Supplied at 0.5 mg/ml in Tris saline, 0.02% sodium azide, pH7.3 with 0.5% bovine serum albumin.

Aliquot and store at -20°C. Minimize freezing and thawing.

Applications Tested

Peptide ELISA: antibody detection limit dilution 1:32000.

Western blot: Approx 50kDa band observed in Zebrafish adult Heart lysates (calculated MW of 44.3kDa according to NP_571415.1). Recommended concentration: 2-5µg/ml.

Species Reactivity

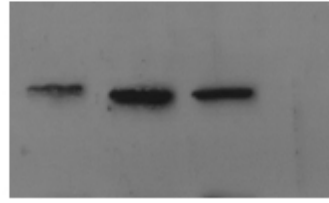
Tested: Zebrafish

Expected from sequence similarity: Zebrafish

Adult hearts samples

50 kd

37 kd



EB07966 (2.5 μ g/ml) staining of Zebrafish adult Heart lysate (35 μ g protein in RIPA buffer). Primary incubation was 1 hour. Detected by chemiluminescence.