

## UK Office

### Everest Biotech Ltd

Cherwell Innovation Centre  
77 Heyford Park  
Upper Heyford  
Oxfordshire  
OX25 5HD  
UK

Enquiries:

[info@everestbiotech.com](mailto:info@everestbiotech.com)

Sales:

[sales@everestbiotech.com](mailto:sales@everestbiotech.com)

Tech support:

[support@everestbiotech.com](mailto:support@everestbiotech.com)

Tel: +44 (0)1869 238326

[www.everestbiotech.com](http://www.everestbiotech.com)

**Research Use Only. Not for  
diagnostic or therapeutic use.**

## EB11067 - Goat Anti-Thyroid peroxidase Antibody

Size: 100µg specific antibody in 200µl



### Target Protein

**Principal Names:** MSA, OTTHUMP00000115535, OTTHUMP00000115536, TDH2A, thyroid microsomal antigen, thyroid peroxidase, thyroperoxidase, TPX, TPO

**Official Symbol:** TPO

**Accession Number(s):** NP\_000538.3; NP\_783650.1; NP\_783652.1; NP\_783653.1

**Human GeneID(s):** [7173](#)

**Important Comments:** This antibody is expected to recognize reported isoforms a (NP\_000538.3), b (NP\_783650.1), d (NP\_78652.1), and e (NP\_783653.1).

### Immunogen

Peptide with sequence C-TRHVIQVSNEVVTDD, from the internal region of the protein sequence according to NP\_000538.3; NP\_783650.1; NP\_783652.1; NP\_783653.1.

Please note the [peptide](#) is available for sale.

### Purification and Storage

Purified from goat serum by ammonium sulphate precipitation followed by antigen affinity chromatography using the immunizing peptide.

Supplied at 0.5 mg/ml in Tris saline, 0.02% sodium azide, pH7.3 with 0.5% bovine serum albumin.

Aliquot and store at -20°C. Minimize freezing and thawing.

### Applications Tested

**Peptide ELISA:** antibody detection limit dilution 1:16000.

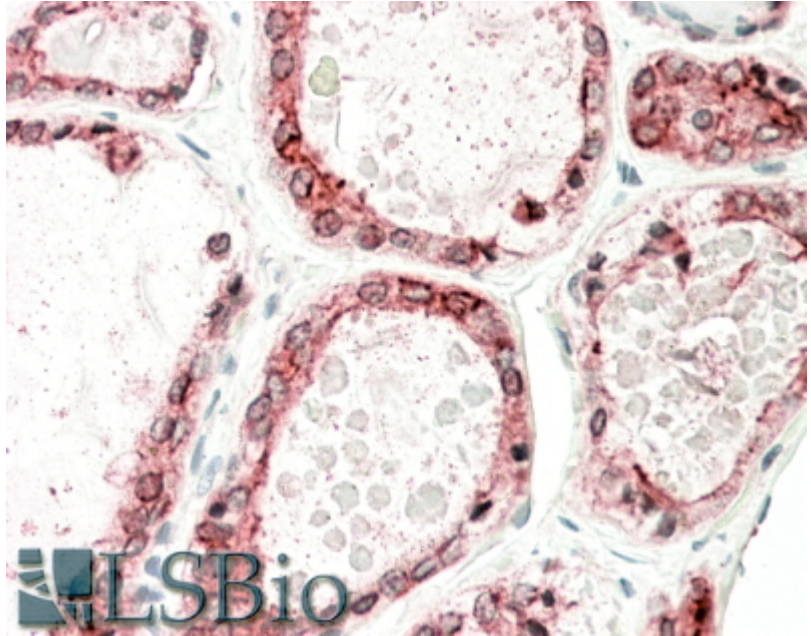
**Western blot:** Approx 110kDa band observed in Human Thyroid Gland lysates (calculated MW of 103kDa according to NP\_000538.3). Recommended concentration: 0.3-1µg/ml.

**IHC:** In paraffin embedded Human Thyroid Gland shows textured staining in the cytoplasm of epithelial cells. Recommended concentration, 5-10µg/ml.

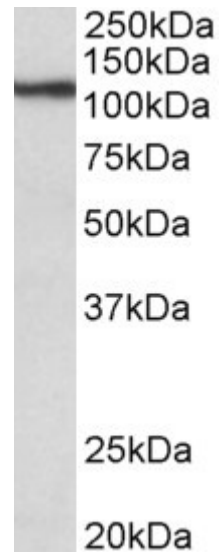
### Species Reactivity

**Tested:** Human

**Expected from sequence similarity:** Human



EB11067 (5 $\mu$ g/ml) staining of paraffin embedded Human Thyroid Gland. Steamed antigen retrieval with citrate buffer pH 6, AP-staining.



EB11067 (0.3 $\mu$ g/ml) staining of Human Thyroid Gland lysate (35 $\mu$ g protein in RIPA buffer). Primary incubation was 1 hour. Detected by chemiluminescence.