



UK Office

Everest Biotech Ltd

Cherwell Innovation Centre
77 Heyford Park
Upper Heyford
Oxfordshire
OX25 5HD
UK

Enquiries:

info@everestbiotech.com

Sales:

sales@everestbiotech.com

Tech support:

support@everestbiotech.com

Tel: +44 (0)1869 238326

Fax: +44 (0)1869 238327

US Office

Everest Biotech c/o Abcore

405 Maple Street, Suite A106
Ramona,
CA 92065
USA

Inquiries:

info@everestbiotech.com

Sales:

usasales@everestbiotech.com

Tech support:

support@everestbiotech.com

Tel: 888-320-4628 (toll-free)

Fax: 888-841-9041

www.everestbiotech.com

**Research Use Only. Not for
diagnostic or therapeutic use.**

EB11068 - Goat Anti-thyroid peroxidase Antibody

Size: 100µg specific antibody in 200µl



Target Protein

Principal Names: MSA, OTTHUMP00000115535, OTTHUMP00000115536, TDH2A, thyroid microsomal antigen, thyroid peroxidase, thyroperoxidase, TPX, TPO

Official Symbol: TPO

Accession Number(s): NP_000538.3; NP_783650.1; NP_783652.1; NP_783653.1

Human GeneID(s): [7173](#)

Important Comments: This antibody is expected to recognize all reported isoforms (NP_000538.3; NP_783650.1; NP_783652.1; NP_783653.1). Reported variants represent identical protein: NP_000538.3, NP_001193673.1 Reported variants represent identical protein: NP_783650.1, NP_001193674.1

Immunogen

Peptide with sequence ELRCGKHQAVGTSPQ, from the C Terminus of the protein sequence according to NP_000538.3; NP_783650.1; NP_783652.1; NP_783653.1.

Please note the [peptide](#) is available for sale.

Purification and Storage

Purified from goat serum by ammonium sulphate precipitation followed by antigen affinity chromatography using the immunizing peptide.

Supplied at 0.5 mg/ml in Tris saline, 0.02% sodium azide, pH7.3 with 0.5% bovine serum albumin.

Aliquot and store at -20°C. Minimize freezing and thawing.

Applications Tested

Peptide ELISA: antibody detection limit dilution 1:32000.

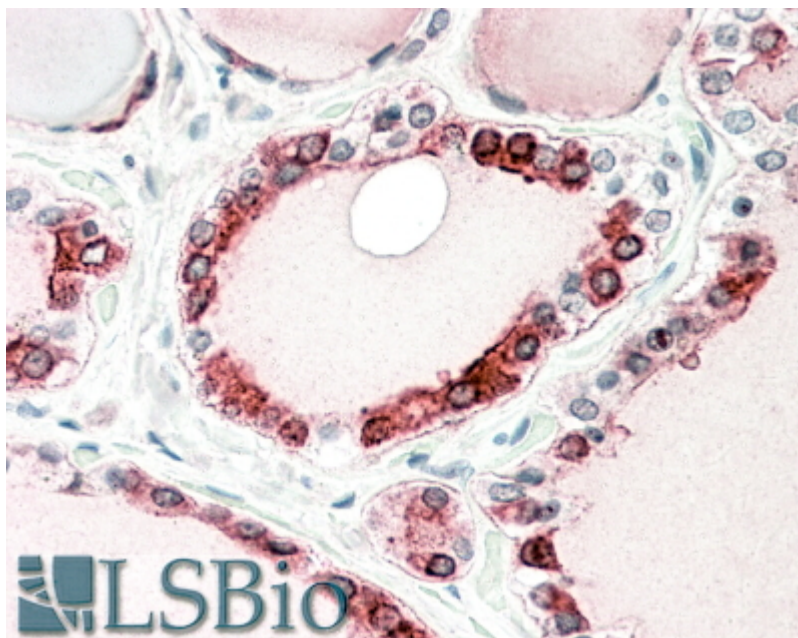
Western blot: Approx 110kDa band observed in Human Thyroid Gland lysates (calculated MW of 103kDa according to NP_000538.3). Recommended concentration: 0.1-0.3µg/ml.

IHC: In paraffin embedded Human Thyroid Gland shows textured staining in the cytoplasm of epithelial cells. Recommended concentration, 5-10µg/ml.

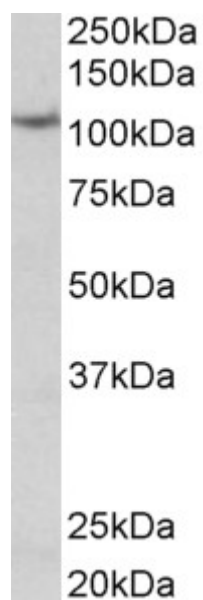
Species Reactivity

Tested: Human

Expected from sequence similarity: Human



EB11068 (5 μ g/ml) staining of paraffin embedded Human Thyroid Gland. Steamed antigen retrieval with citrate buffer pH 6, AP-staining.



EB11068 (0.1 μ g/ml) staining of Thyroid Gland lysate (35 μ g protein in RIPA buffer). Primary incubation was 1 hour. Detected by chemiluminescence.