



UK Office

Everest Biotech Ltd

Cherwell Innovation Centre
77 Heyford Park
Upper Heyford
Oxfordshire
OX25 5HD
UK

Enquiries:

info@everestbiotech.com

Sales:

sales@everestbiotech.com

Tech support:

support@everestbiotech.com

Tel: +44 (0)1869 238326

www.everestbiotech.com

**Research Use Only. Not for
diagnostic or therapeutic use.**

EB11067-B - Goat Anti-Thyroid peroxidase, Biotinylated Antibody

Size: 100µg specific antibody in 200µl



Target Protein

Principal Names: TPO, thyroid peroxidase, MSA, TDH2A, TPX, thyroid microsomal antigen, thyroperoxidase

Official Symbol: TPO

Accession Number(s): NP_000538.3; NP_783650.1; NP_783652.1; NP_783653.1

Human GeneID(s): [7173](#)

Important Comments: This antibody is expected to recognize reported isoforms a (NP_000538.3), b (NP_783650.1), d (NP_78652.1), and e (NP_783653.1). Reported variants represent identical protein: NP_000538.3, NP_001193673.1 Reported variants represent identical protein: NP_783650.1, NP_001193674.1

Immunogen

Peptide with sequence CTRHVIQVSNEVVTDD., from the internal region of the protein sequence according to NP_000538.3; NP_783650.1; NP_783652.1; NP_783653.1.

Please note the [peptide](#) is available for sale.

Purification and Storage

Purified from goat serum by ammonium sulphate precipitation followed by antigen affinity chromatography using the immunizing peptide.

Supplied at 0.5 mg/ml in Tris saline, 0.02% sodium azide, pH7.3 with 0.5% bovine serum albumin.

Aliquot and store at -20°C. Minimize freezing and thawing.

Applications Tested

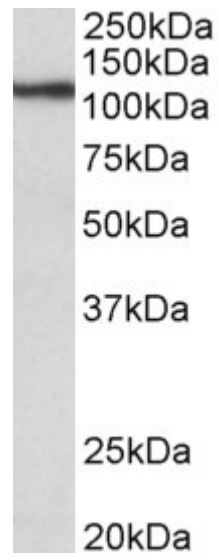
Peptide ELISA: antibody detection limit dilution 1:16000.

Western blot: Approx 110kDa band observed in Human Thyroid Gland lysates (calculated MW of 103kDa according to NP_000538.3). See non-biotinylated parental product's datasheet for further QC data. Recommended concentration: 0.3-1µg/ml.

Species Reactivity

Tested: Human

Expected from sequence similarity: Human



Biotinylated EB11067 (0.3 μ g/ml) staining of Human Thyroid Gland lysate (35 μ g protein in RIPA buffer). Primary incubation was 1 hour. Detected by chemiluminescence.