

EB07741 - Goat Anti-TIA1 Antibody

Size: 100µg specific antibody in 200µl



UK Office

Everest Biotech Ltd

Cherwell Innovation Centre
77 Heyford Park
Upper Heyford
Oxfordshire
OX25 5HD
UK

Enquiries:

info@everestbiotech.com

Sales:

sales@everestbiotech.com

Tech support:

support@everestbiotech.com

Tel: +44 (0)1869 238326

Fax: +44 (0)1869 238327

US Office

Everest Biotech c/o Abcore

405 Maple Street, Suite A106
Ramona,
CA 92065
USA

Inquiries:

info@everestbiotech.com

Sales:

usasales@everestbiotech.com

Tech support:

support@everestbiotech.com

Tel: 888-320-4628 (toll-free)

Fax: 888-841-9041

www.everestbiotech.com

**Research Use Only. Not for
diagnostic or therapeutic use.**

Target Protein

Principal Names: TIA1, TIA1 cytotoxic granule-associated RNA binding protein, TIA1 cytotoxic granule-associated RNA-binding protein, TIA1 protein, cytotoxic granule-associated RNA-binding protein, p40-TIA-1 (containing p15-TIA-1)

Official Symbol: TIA1

Accession Number(s): NP_071320.1; NP_071505.1

Human GeneID(s): [7072](#)

Non-Human GeneID(s): 21841 (mouse), 312510 (rat)

Important Comments: This antibody is expected to recognise both reported isoforms (NP_071320.1 and NP_071505.1).

Immunogen

Peptide with sequence C-PKSTYESNTKQ, from the internal region of the protein sequence according to NP_071320.1; NP_071505.1.

Please note the [peptide](#) is available for sale.

Purification and Storage

Purified from goat serum by ammonium sulphate precipitation followed by antigen affinity chromatography using the immunizing peptide.

Supplied at 0.5 mg/ml in Tris saline, 0.02% sodium azide, pH7.3 with 0.5% bovine serum albumin.

Aliquot and store at -20°C. Minimize freezing and thawing.

Applications Tested

Peptide ELISA: antibody detection limit dilution 1:128000.

Western blot: Approx 40kDa band observed in lysates of cell line Jurkat (calculated MW of 41.8kDa according to NP_071320.1). Recommended concentration: 0.1-0.3µg/ml.

Primary incubation was 1 hour. An additional band at 80kDa and a very strong 26kDa is also observed. These bands were successfully blocked by incubation with the immunising peptide.

IHC: Paraffin embedded Human Thyroid. Recommended concentration: 3.75µg/ml.

Immunofluorescence: Strong expression of the protein seen in the nucleus and cytoplasm of HeLa cells. Recommended concentration: 5µg/ml.

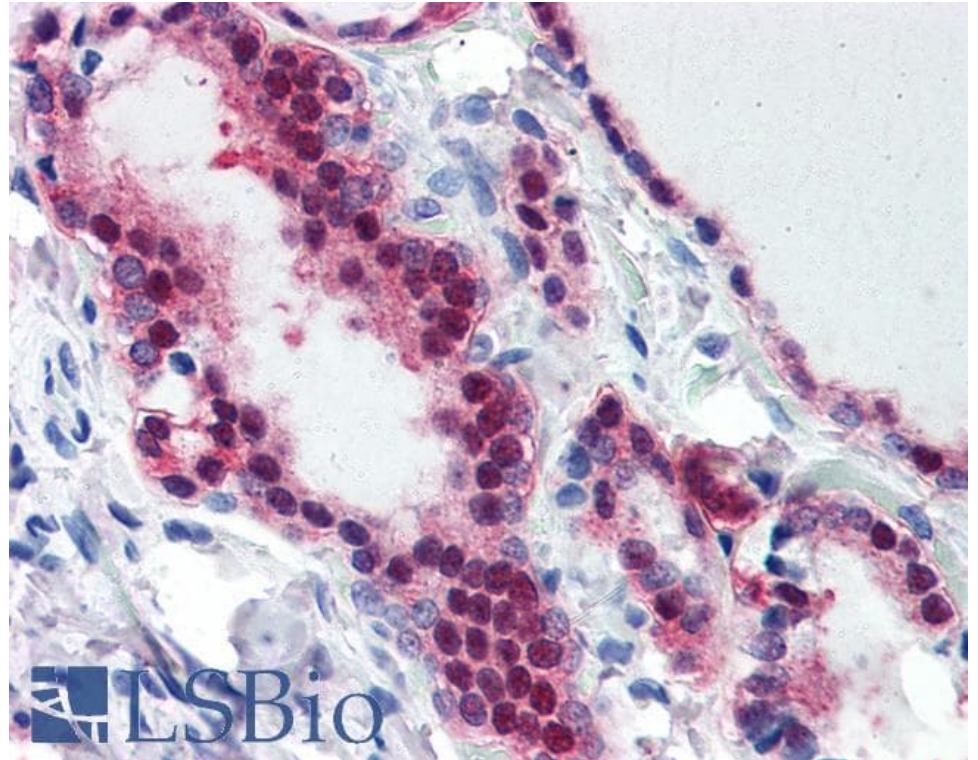
Species Reactivity

Tested: Human

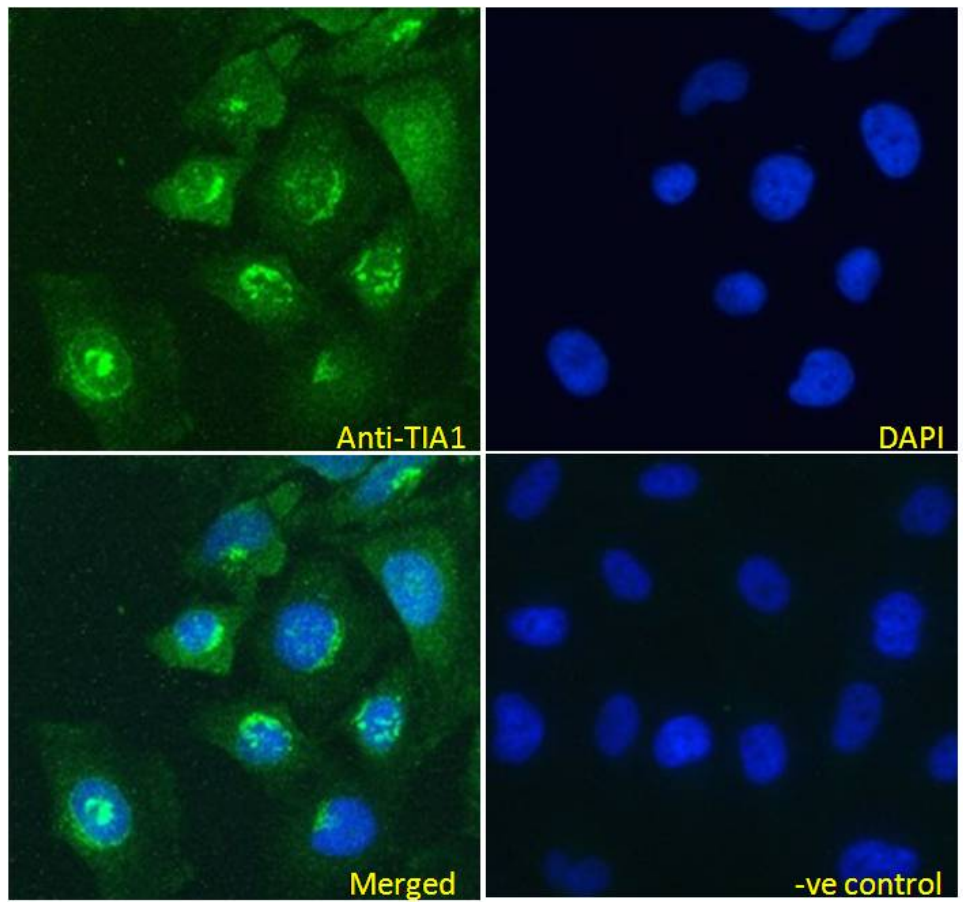
Expected from sequence similarity: Human, Mouse, Rat, Dog



EB07741 (0.1 μ g/ml) staining of Jurkat cell lysate (35 μ g protein in RIPA buffer). Detected by chemiluminescence.



EB07741 (3.75 μ g/ml) staining of paraffin embedded Human Thyroid. Steamed antigen retrieval with citrate buffer pH 6, AP-staining.



EB07741 Immunofluorescence analysis of paraformaldehyde fixed HeLa cells, permeabilized with 0.15% Triton. Primary incubation 1hr (5ug/ml) followed by Alexa Fluor 488 secondary antibody (2ug/ml), showing nuclear and some cytoplasmic staining. The nuclear stain is DAPI (blue). Negative control: Unimmunized goat IgG (5ug/ml) followed by Alexa Fluor 488 secondary antibody (2ug/ml).