



## UK Office

### Everest Biotech Ltd

Cherwell Innovation Centre  
77 Heyford Park  
Upper Heyford  
Oxfordshire  
OX25 5HD  
UK

Enquiries:

[info@everestbiotech.com](mailto:info@everestbiotech.com)

Sales:

[sales@everestbiotech.com](mailto:sales@everestbiotech.com)

Tech support:

[support@everestbiotech.com](mailto:support@everestbiotech.com)

Tel: +44 (0)1869 238326

[www.everestbiotech.com](http://www.everestbiotech.com)

**Research Use Only. Not for  
diagnostic or therapeutic use.**

## EB10560 - Goat Anti-TIAM2 Antibody

Size: 100µg specific antibody in 200µl



### Target Protein

**Principal Names:** TIAM2, T-cell lymphoma invasion and metastasis 2, FLJ41865, STEF, TIAM-2, OTTHUMP00000017472, SIF and TIAM1-like exchange factor, T-lymphoma invasion and metastasis-inducing protein 2

**Official Symbol:** TIAM2

**Accession Number(s):** NP\_036586.2

**Human GeneID(s):** [26230](#)

**Non-Human GeneID(s):** 24001 (mouse)

**Important Comments:** This antibody is expected to recognize isoform a (NP\_036586.2) only.

### Immunogen

Peptide with sequence TLQGSKNHSNT-C, from the N Terminus of the protein sequence according to NP\_036586.2.

Please note the [peptide](#) is available for sale.

### Purification and Storage

Purified from goat serum by ammonium sulphate precipitation followed by antigen affinity chromatography using the immunizing peptide.

Supplied at 0.5 mg/ml in Tris saline, 0.02% sodium azide, pH7.3 with 0.5% bovine serum albumin.

Aliquot and store at -20°C. Minimize freezing and thawing.

### Applications Tested

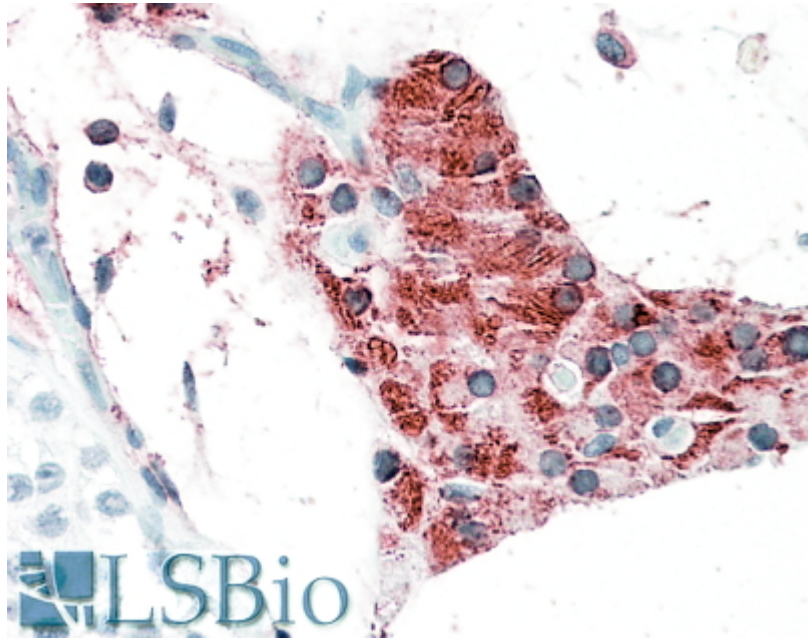
**Peptide ELISA:** antibody detection limit dilution 1:64000.

**IHC:** In paraffin embedded Human Testis shows cytoskeletal staining in interstitial (Leydig) cells. Recommended concentration: 5-10µg/ml.

### Species Reactivity

**Tested:** Human

**Expected from sequence similarity:** Human, Mouse, Dog



EB10560 (5µg/ml) staining of paraffin embedded Human Testis. Steamed antigen retrieval with citrate buffer pH 6, AP-staining.