

## UK Office

### Everest Biotech Ltd

Cherwell Innovation Centre  
77 Heyford Park  
Upper Heyford  
Oxfordshire  
OX25 5HD  
UK

Enquiries:

[info@everestbiotech.com](mailto:info@everestbiotech.com)

Sales:

[sales@everestbiotech.com](mailto:sales@everestbiotech.com)

Tech support:

[support@everestbiotech.com](mailto:support@everestbiotech.com)

Tel: +44 (0)1869 238326

[www.everestbiotech.com](http://www.everestbiotech.com)

**Research Use Only. Not for  
diagnostic or therapeutic use.**

## EB11762 - Goat Anti-TIM-1 Antibody

Size: 100µg specific antibody in 200µl



### Target Protein

**Principal Names:** HAVCR, HAVCR1, HAVCR-1, hepatitis A virus cellular receptor 1, kidney injury molecule 1, KIM1, KIM-1, OTTHUMP00000224005, OTTHUMP00000224052, OTTHUMP00000224053, T cell immunoglobulin domain and mucin domain protein 1, T-cell membrane protein 1, TIM, TIM1, TIM-1, TIMD1, TIMD-1

**Official Symbol:** HAVCR1

**Human GeneID(s):** [26762](#)

**Important Comments:** The immunizing peptide represents part of the extracellular domain. Reported variants represent identical protein: NP\_001166864.1, NP\_001092884.1, NP\_036338.2

### Immunogen

Peptide with sequence C-THVTYRKDTRYK, from the internal region of the protein sequence according to .

Please note the [peptide](#) is available for sale.

### Purification and Storage

Purified from goat serum by ammonium sulphate precipitation followed by antigen affinity chromatography using the immunizing peptide.

Supplied at 0.5 mg/ml in Tris saline, 0.02% sodium azide, pH7.3 with 0.5% bovine serum albumin.

Aliquot and store at -20°C. Minimize freezing and thawing.

### Applications Tested

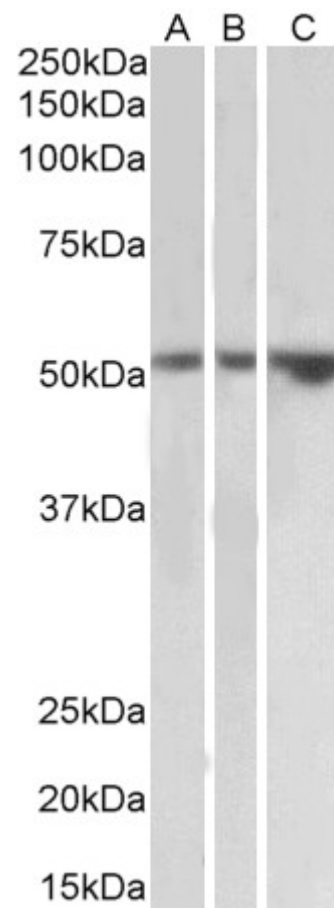
**Peptide ELISA:** antibody detection limit dilution 1:16000.

**Western blot:** Approx 52kDa band observed in Human Kidney, Testis and Uterus lysates (calculated MW of 39.2kDa according to NP\_036338.2). This molecular weight is routinely observed by other sources. Recommended concentration: 1-3µg/ml.

### Species Reactivity

**Tested:** Human

**Expected from sequence similarity:** Human



EB11762 (2 $\mu$ g/ml) staining of Kidney (A), Testis (B) and Uterus (C) lysates (35 $\mu$ g protein in RIPA buffer). Primary incubation was 1 hour. Detected by chemiluminescence.