



UK Office

Everest Biotech Ltd

Cherwell Innovation Centre
77 Heyford Park
Upper Heyford
Oxfordshire
OX25 5HD
UK

Enquiries:

info@everestbiotech.com

Sales:

sales@everestbiotech.com

Tech support:

support@everestbiotech.com

Tel: +44 (0)1869 238326

www.everestbiotech.com

**Research Use Only. Not for
diagnostic or therapeutic use.**

EB09794 - Goat Anti-TIPRL Antibody

Size: 100µg specific antibody in 200µl



Target Protein

Principal Names: CG9578-like, dJ69E11.3, MGC3794, OTTHUMP00000032581, OTTHUMP00000032582, putative MAPK activating protein, TIP, TIP41, TIP41, TOR signaling pathway regulator-like (*S. cerevisiae*), TIP41, TOR signalling pathway regulator-like, yeast YPR037W and worm, TIPRL

Official Symbol: TIPRL

Accession Number(s): NP_690866.1

Human GeneID(s): [261726](#)

Non-Human GeneID(s): 226591 (mouse), 360869 (rat)

Important Comments: This antibody is expected to recognize isoform 1 (NP_690866.1).

Immunogen

Peptide with sequence C-RIDPNPADSQKSTQ, from the C Terminus of the protein sequence according to NP_690866.1.

Please note the [peptide](#) is available for sale.

Purification and Storage

Purified from goat serum by ammonium sulphate precipitation followed by antigen affinity chromatography using the immunizing peptide.

Supplied at 0.5 mg/ml in Tris saline, 0.02% sodium azide, pH7.3 with 0.5% bovine serum albumin.

Aliquot and store at -20°C. Minimize freezing and thawing.

Applications Tested

Peptide ELISA: antibody detection limit dilution 1:16000.

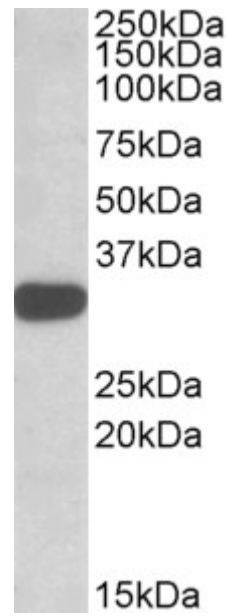
Western blot: Approx 30kDa band observed in lysates of cell line K562 (calculated MW of 31.4kDa according to NP_690866.1). Recommended concentration: 1-3µg/ml. Primary incubation was 1 hour.

IHC: Paraffin embedded Human Breast. Recommended concentration: 3.75µg/ml.

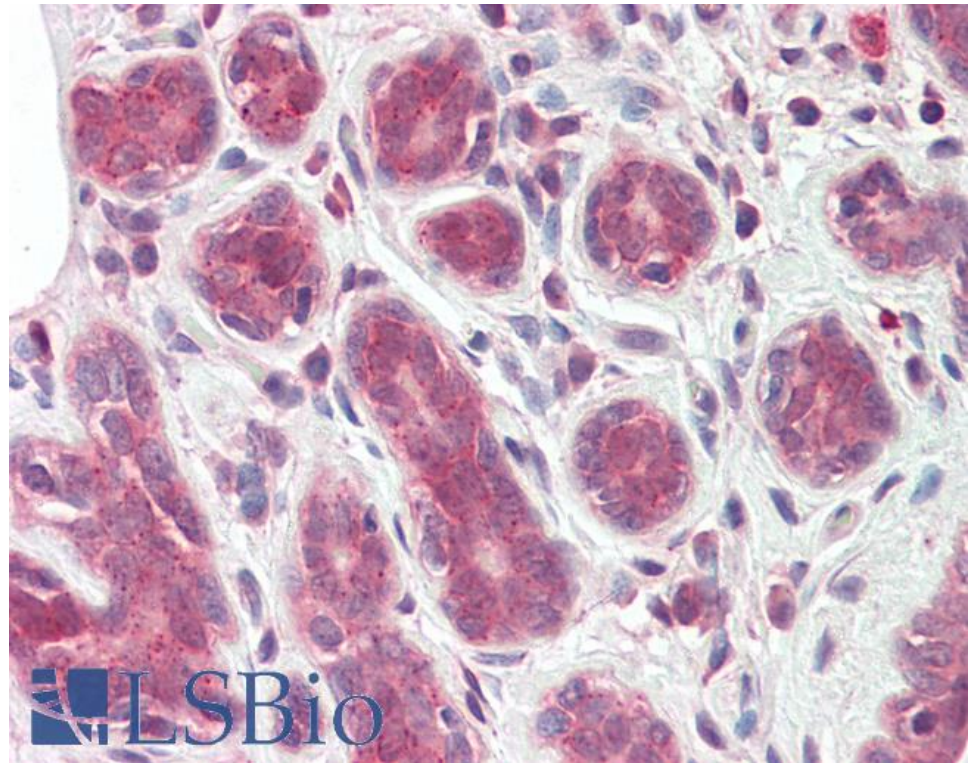
Species Reactivity

Tested: Human

Expected from sequence similarity: Human, Mouse, Rat, Dog, Cow



EB09794 (1 µg/ml) staining of K562 lysate (35 µg protein in RIPA buffer). Detected by chemiluminescence.



EB09794 (3.75 µg/ml) staining of paraffin embedded Human Breast. Steamed antigen retrieval with citrate buffer pH 6, AP-staining.