



Everest Biotech Ltd  
Cherwell Innovation Centre  
77 Heyford Park  
Upper Heyford  
Oxfordshire  
OX25 5HD, United Kingdom

[everestbiotech.com](http://everestbiotech.com)

[sales@everestbiotech.com](mailto:sales@everestbiotech.com)

[support@everestbiotech.com](mailto:support@everestbiotech.com)

Tel +44 1869 238326

Fax +44 1869 238327

**Research Use Only. Not for diagnostic or therapeutic use.**

Storage: For long-term storage keep aliquots at -20°C. (Store no longer than 12 months at 4°C). Minimize freezing and thawing.

## EB05048 - Goat Anti-Tissue Factor Pathway Inhibitor Antibody

Size: 100µg specific antibody in 200µl



### Target Protein

**Principal Names:** tissue factor pathway inhibitor, lipoprotein-associated coagulation inhibitor, extrinsic pathway inhibitor, anti-convertin, OTTHUMP00000205431, OTTHUMP00000163472, TFPI1, TFI, LACI, EPI, TFPI, tissue factor pathway inhibitor (lipoprotein-associated coagulation inhibitor)

**Official Symbol:** TFPI

**Accession Number(s):** NP\_006278.1

**Human GeneID(s):** [7035](#)

**Important Comments:** This antibody is expected to recognize isoform a (NP\_006278.1) only.

### Immunogen

Peptide with sequence C-VKIAYEEIFVKNM, from the C Terminus of the protein sequence according to NP\_006278.1.

Please note the [peptide](#) is available for sale.

### Purification and Storage

Purified from goat serum by ammonium sulphate precipitation followed by antigen affinity chromatography using the immunizing peptide.

Supplied at 0.5 mg/ml in Tris saline, 0.02% sodium azide, pH7.3 with 0.5% bovine serum albumin.

Aliquot and store at -20°C. Minimize freezing and thawing.

### Applications Tested

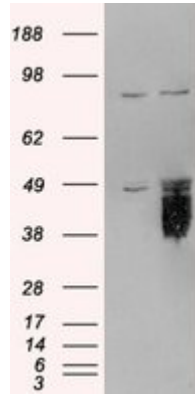
**Peptide ELISA:** antibody detection limit dilution 1:64000.

**Western blot:** Approx 50kDa band observed in lysates of cell lines HepG2 and HeLa (calculated MW of 35.0kDa according to NP\_006278.1). In transfected HEK293 transiently expressing TFPI bands of approx. 38kDa to 45kDa are observed. These bands are not observed in the non-transfected HEK293. Recommended concentration: 0.3-1µg/ml.

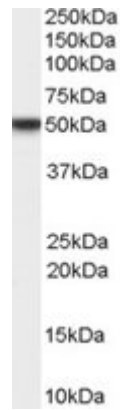
### Species Reactivity

**Tested:** Human

**Expected from sequence similarity:** Human



HEK293 overexpressing TFPI (RC219033) and probed with EB05048 (mock transfection in first lane), tested by Origene.



EB05048 staining (0.3µg/ml) of HeLa lysate (RIPA buffer, 35µg total protein cells per lane). Primary incubated for 1 hour. Detected by western blot using chemiluminescence.