



UK Office

Everest Biotech Ltd

Cherwell Innovation Centre
77 Heyford Park
Upper Heyford
Oxfordshire
OX25 5HD
UK

Enquiries:

info@everestbiotech.com

Sales:

sales@everestbiotech.com

Tech support:

support@everestbiotech.com

Tel: +44 (0)1869 238326

Fax: +44 (0)1869 238327

US Office

Everest Biotech c/o Abcore

405 Maple Street, Suite A106
Ramona,
CA 92065
USA

Inquiries:

info@everestbiotech.com

Sales:

usasales@everestbiotech.com

Tech support:

support@everestbiotech.com

Tel: 888-320-4628 (toll-free)

Fax: 888-841-9041

www.everestbiotech.com

**Research Use Only. Not for
diagnostic or therapeutic use.**

EB10488 - Goat Anti-TMEM205 (aa137-146) Antibody

Size: 100µg specific antibody in 200µl



Target Protein

Principal Names: MBC3205, MGC110858, MGC3205, transmembrane protein 205, UNQ501, TMEM205

Official Symbol: TMEM205

Accession Number(s): NP_212133.1

Human GeneID(s): [374882](#)

Non-Human GeneID(s): 235043 (mouse), 300441 (rat)

Important Comments: Reported variants represent identical protein: NP_940938.1, NP_212133.1, NP_001138888.1

Immunogen

Peptide with sequence C-PDPYRQLREK, from the internal region of the protein sequence according to NP_212133.1.

Please note the [peptide](#) is available for sale.

Purification and Storage

Purified from goat serum by ammonium sulphate precipitation followed by antigen affinity chromatography using the immunizing peptide.

Supplied at 0.5 mg/ml in Tris saline, 0.02% sodium azide, pH7.3 with 0.5% bovine serum albumin.

Aliquot and store at -20°C. Minimize freezing and thawing.

Applications Tested

Peptide ELISA: antibody detection limit dilution 1:16000.

Western blot: Approx 22kDa band observed in Human Pancreas lysates (calculated MW of 21.2kDa according to NP_212133.1). Recommended concentration: 0.03-0.1µg/ml.

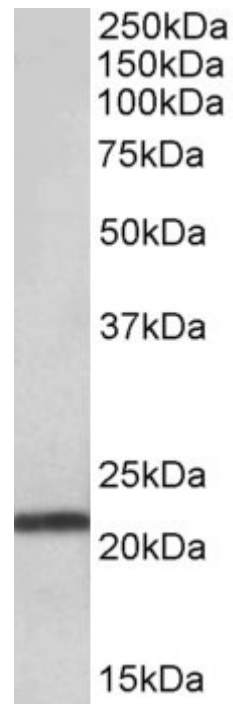
Primary incubation was 1 hour. Preliminary testing was unsuccessful on Rat and Mouse Pancreas and 3T3 cell line for this particular batch.

IHC: Paraffin embedded Human Tonsil. Recommended concentration: 5µg/ml.

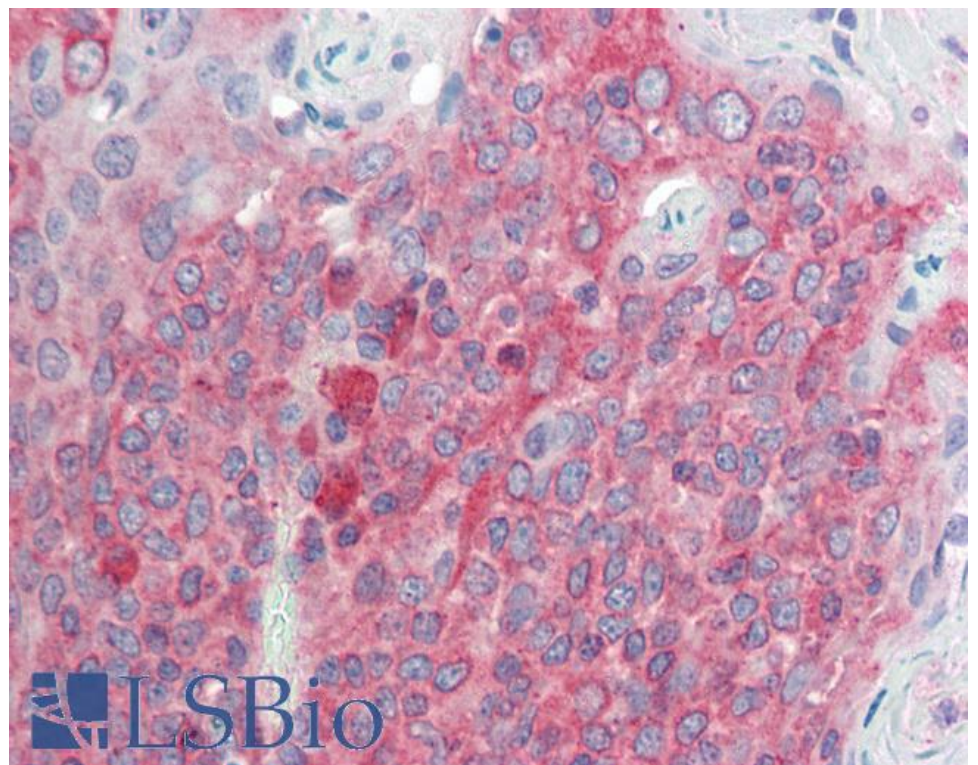
Species Reactivity

Tested: Human

Expected from sequence similarity: Human, Mouse, Rat, Dog



EB10487 (0.03 μ g/ml) staining of Human Pancreas lysate (35 μ g protein in RIPA buffer). Detected by chemiluminescence.



EB10488 (5 μ g/ml) staining of paraffin embedded Human Tonsil. Steamed antigen retrieval with citrate buffer pH 6, AP-staining.