



## UK Office

### Everest Biotech Ltd

Cherwell Innovation Centre  
77 Heyford Park  
Upper Heyford  
Oxfordshire  
OX25 5HD  
UK

Enquiries:

[info@everestbiotech.com](mailto:info@everestbiotech.com)

Sales:

[sales@everestbiotech.com](mailto:sales@everestbiotech.com)

Tech support:

[support@everestbiotech.com](mailto:support@everestbiotech.com)

Tel: +44 (0)1869 238326

Fax: +44 (0)1869 238327

## US Office

### Everest Biotech c/o Abcore

405 Maple Street, Suite A106  
Ramona,  
CA 92065  
USA

Inquiries:

[info@everestbiotech.com](mailto:info@everestbiotech.com)

Sales:

[usasales@everestbiotech.com](mailto:usasales@everestbiotech.com)

Tech support:

[support@everestbiotech.com](mailto:support@everestbiotech.com)

Tel: 888-320-4628 (toll-free)

Fax: 888-841-9041

[www.everestbiotech.com](http://www.everestbiotech.com)

**Research Use Only. Not for  
diagnostic or therapeutic use.**

## EB10487 - Goat Anti-TMEM205 (aa142-151) Antibody

Size: 100µg specific antibody in 200µl



### Target Protein

**Principal Names:** MBC3205, MGC110858, MGC3205, transmembrane protein 205, UNQ501, TMEM205

**Official Symbol:** TMEM205

**Accession Number(s):** NP\_212133.1

**Human GeneID(s):** [374882](#)

**Non-Human GeneID(s):** 235043 (mouse), 300441 (rat)

**Important Comments:** Reported variants represent identical protein: NP\_940938.1, NP\_212133.1, NP\_001138888.1.

### Immunogen

Peptide with sequence C-QLREKDPKYS, from the internal region of the protein sequence according to NP\_212133.1.

Please note the [peptide](#) is available for sale.

### Purification and Storage

Purified from goat serum by ammonium sulphate precipitation followed by antigen affinity chromatography using the immunizing peptide.

Supplied at 0.5 mg/ml in Tris saline, 0.02% sodium azide, pH7.3 with 0.5% bovine serum albumin.

Aliquot and store at -20°C. Minimize freezing and thawing.

### Applications Tested

**Peptide ELISA:** antibody detection limit dilution 1:16000.

**Western blot:** Approx 22kDa band observed in Human Pancreas lysates (calculated MW of 21.2kDa according to NP\_212133.1). Recommended concentration: 0.03-0.1µg/ml.

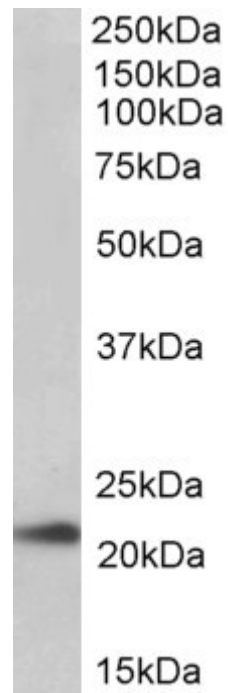
Primary incubation was 1 hour.

**IHC:** Paraffin embedded Human Tonsil. Recommended concentration: 5µg/ml.

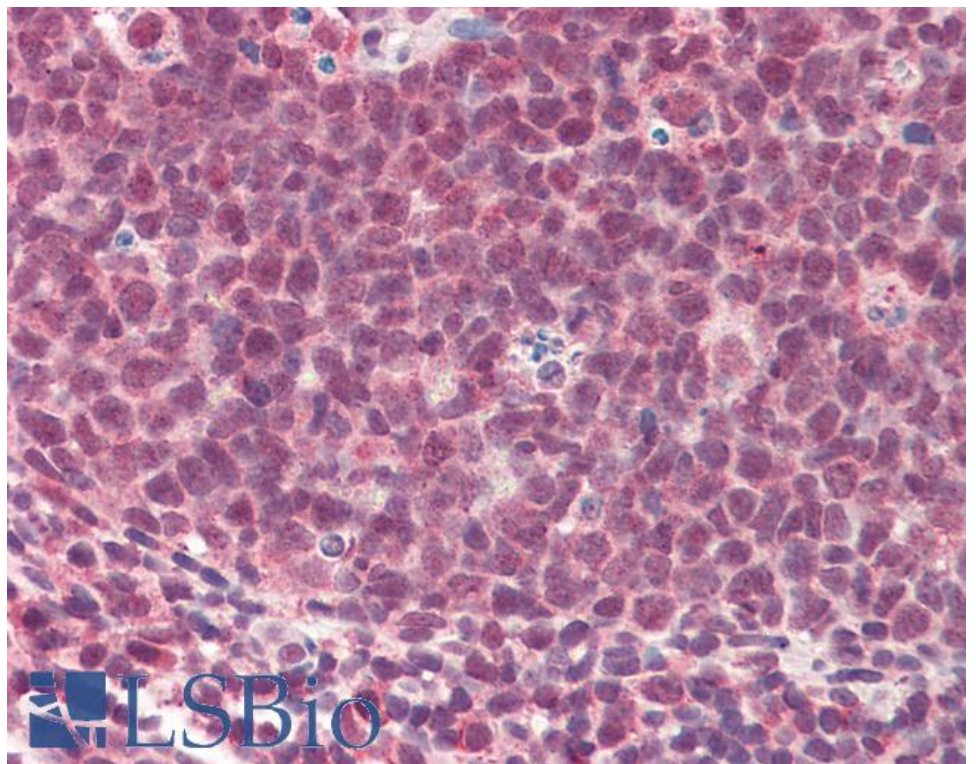
### Species Reactivity

**Tested:** Human

**Expected from sequence similarity:** Human, Mouse, Rat



EB10487 (0.03 $\mu$ g/ml) staining of Human Pancreas lysate (35 $\mu$ g protein in RIPA buffer). Detected by chemiluminescence.



EB10487 (5 $\mu$ g/ml) staining of paraffin embedded Human Tonsil. Steamed antigen retrieval with citrate buffer pH 6, AP-staining.